



Upcoming Events:

January 13-16, 2008
AFBF Annual Meeting
New Orleans, Louisiana

www.fb.org

Online Features:



http://www.lacfb.org/movies.html

January/February 2008 Meeting Calendar

Table with 3 columns: Meeting Name, Date, Time

In This Issue:

Table listing contents: Faces of LACFB, LACFB Directory & Resources, President's Message, etc.

Faces of LACFB

07 Rewind

LACFB Office Staff



As we begin the New Year, let's take an annual rewind of past events that the Los Angeles County Farm Bureau (LACFB) office staff had attended throughout 2007.

LACFB continually works for the farmer by attending many meetings covering water, and air quality issues that impact Los Angeles County. Our educational programs have brought agriculture to the forefront. Here is a look back at some of the highlights that the Farm Bureau Office Staff had participated with during the past year:

- January 2007: Presentation at Laurence Elementary School
February 2007: A Taste of CA Event
March 2007: AV Fair Home Show
April 2007: Big I Day
May 2007: 48th District School's Involvement Fair

LOS ANGELES COUNTY FARM BUREAU

CALIFORNIA FARM BUREAU FEDERATION DISTRICT DIRECTOR L.A. & ORANGE COUNTIES

Norm Groot

EXECUTIVE BOARD

President Terry Munz
 1st Vice President Julie Kyle
 2nd Vice President Dennis Kilcoyne
 Secretary/Treasurer Ralph Bozigian
 Director-at-Large Jess Baker
 Past President David Rizzo

Los Angeles County Farm Bureau Directors' Meeting Attendance 2007

Director	Nov	Dec	Jan
Casey Alesso	P	D	*
Gloria Alesso	P	P	*
Jess Baker	P	P	*
Ralph Bozigian	P	E	*
Brandon Calandri	P	D	*
John Calandri	P	D	*
Steve Godde	P	D	*
John Goit	P	D	*
Dennis Groven	P	D	*
Maxwell Harter	E	D	*
Scott Harter	E	D	*
Robert Jones	P	D	*
Dennis Kilcoyne	E	D	*
Gailen Kyle	P	D	*
Julie Kyle	P	P	*
John Maritorea	P	D	*
Richard Miner	P	D	*
Terry Munz	P	P	*
Eugene Nebeker	P	D	*
Roy Pursche	P	D	*
Dave Rizzo	P	E	*
Steve Rodrigues	P	D	*
Jeff Siebert	P	D	*
Craig VanDam	E	D	*
Jessie White	P	D	*

E= Excused
 P=Present
 D=Dark
 *=Meeting did not take place before time of posting

EXECUTIVE DIRECTOR

Laura E. Blank
 (661) 274-9709
 E-mail: exec@lacfb.org

RESOURCES

Los Angeles County Agricultural Commissioner
 12300 Lower Azusa Road
 Arcadia, CA 91006-5872
 (626) 575-5451

Antelope Valley Resource Conservation District
 44811 N. Date Avenue, Suite G
 Lancaster, CA 93534
 (661) 945-2604 ext. 107
 E-mail: avrcd@carcd.org

U.S. Department of Agriculture Farm Service Agency
 44811 N. Date Avenue, Suite B
 Lancaster, CA 93534
 (661) 942-9549

U.S. Department of Agriculture Natural Resources Conservation Service
 44811 N. Date Avenue, Suite G
 Lancaster, CA 93534
 (661) 945-2604 ext. 3



Vol. 13 Issue 18 LOS ANGELES COUNTY Jan/Feb 2008

Farm Bureau News

FARM BUREAU NEWS is a bimonthly newsletter published by the LOS ANGELES COUNTY FARM BUREAU, 41228 12th Street West, Suite A, Palmdale, California 93551-1400, (661) 274-9709.

GENERAL INFORMATION AND ADVERTISING INQUIRIES:

Telephone: (661) 274-9709
 FAX: (661) 274-0637
 E-mail: exec@lacfb.org

CONTRIBUTING WRITERS FOR THIS ISSUE

Kurt Floren-LA County Agricultural Commissioner.
Kelly Cormier- Program coordinator for the CFAITC.
Norman C. Groot-CFBF Director, District 3
Brian Watson-Farm Bureau Group Manager.

FIELD RESEARCH REPORTER FOR FACES OF LACFB, TEACHERS' CORNER, & LAYOUT DESIGN

Victoria Gerginis-LACFB Office Staff and Education Coordinator

Please Note: The Los Angeles County Farm Bureau does not assume responsibility for statements by advertisers for products advertised in Farm Bureau News, nor does the Farm Bureau assume responsibility for statements or expressions of opinion other than those expressed in editorials or articles showing authorship by an officer, director, or employee of the Los Angeles County Farm Bureau or its affiliates.



from the

LACFB Board of Directors & LACFB Office Staff

President's Message:

Greetings,

I would like to welcome you in joining us for the new year. As you can see by the cover story, our organization has been busy promoting agricultural issues throughout Los Angeles County, as well as statewide.

The Los Angeles County Farm Bureau had attended the CA Farm Bureau Federation's Annual Meeting in December. Individuals from LACFB's Board of Directors attended to voice their opinions regarding the bona fide farmer. This issue is with regard to whether or not the definition of a bona fide farmer should be expanded to include part time farmers, as well as those working in an agricultural related industry.

LACFB Board Member **Roy Pursche**, had a wonderful speech that had a major impact on the crowd. He assured the delegates that change is good, and that his attendance at CFBF had spanned many years. He saw this updated definition of a bona fide farmer as a good direction for the organization.

The conversation concerning the bona fide farmer was heated, but in the end the measure won by over 2/3 of a vote. Some attendees said that was the longest discussion concerning a change in CFBF history.

Terry A. Munz

THANK YOU

Malibu Family Farms

&

AV Tractor & Turf

for your donation for the LACFB's Annual Dinner



Mr. Kurt Floren
Los Angeles County
Agricultural Commissioner

**The Agricultural
Commissioner Kurt
Floren and the
entire staff of the
Los Angeles County
Dept. of Agricultural
Commissioner/
Weights and Measures**

**wish the Executive Staff, Directors, and all
members of LACFB the very happiest of holidays and a
*safe, prosperous new year.***

08
AG DAY LA

Go to

www.agdayla.com
for more information

**EQUIPMENT YOU CAN DEPEND ON.
PEOPLE YOU CAN TRUST.**



Compact & Utility Tractors • Gators™ • Trekers • Ag. & Consumer Products
Lawn & Garden Equip. • Parts & Service • Hydraulic hoses made on-site.



AV TRACTOR & TURF
(Division of South Kern Machinery)



JOHN DEERE

1111 West Ave. L-12, Lancaster, CA 93534

Ph. 661-948-8882 • Fax 661-948-8889

NOW OPEN AND READY TO SERVE YOU!

*Become a
Farm
Bureau
Member!*

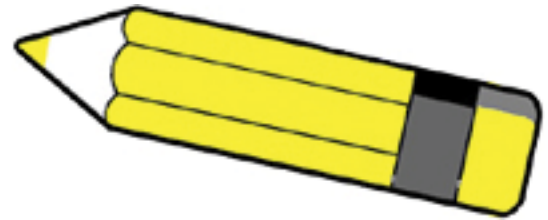


**Please call :
1-800-698-3276
today!**



Teacher's Corner:

Art-Writing Contest 08:



LACFB's First Annual Art-Writing Contest

LACFB's First Annual Art-Writing Contest



Calling all teachers in Los Angeles County

***Do your students know where the food they eat
or the clothes they wear come from?***

LA County has a rich history in agriculture starting from the early 1900s till today. Our agricultural commodities bring millions of dollars to Los Angeles annually (view LA commodities list and crop reports at: <http://www.lacfb.org/reports.html>).

Help your students learn more about how farming affects their daily lives:

Bring the talents of your aspiring artists and writers together. Let your students' creativities shine, as they learn more about the hard work and benefits of agriculture.

Contest rules This contest is designed to be a collaborative classroom project for grades K-12 (Please note that there is only one prize. The contest will be based upon creativity and how each media reflects the agricultural theme chosen by your classroom. In other words, it will not be solely based on the execution of the projects, but rather the thought process that went into it. The winning project will demonstrate a direct connection between the students' daily lives and agriculture).

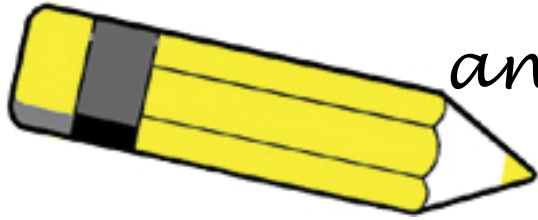
As a collaborative piece, we would like to see your students' create artwork and a creative writing piece. It does not matter which method is created first, as long as both reflect each other. The story can include any perspective as long as the conclusion makes a connection to how farming affects our livelihood (i.e. My Life as a Dairy Cow; where the ending of the story reflects students enjoying the benefits of the end product ~ milk).

All methods must include the following criteria:

The artwork must be original and reflect the written story in some way. Any media is acceptable (i.e. drawing, painting, computer art, sculpture, mixed media, etc.) Artwork can be as small or large as your students' imaginations allow.

AND

The creative writing piece must also be original and reflect the artwork in some way. It must contain at least four agricultural facts (please cite your sources, any acceptable format ~ i.e. MLA) and be at least 500 words.



and other educational announcements-

Become a
Farm Bureau
Member!

Please call :
1-800-698-3276
today!

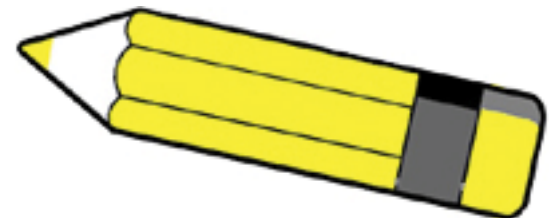
Deadline Projects must be postmarked by April 25, 2008 (Friday). No entries will be accepted after that date. Please mail or drop off your class entry at the **Los Angeles County Farm Bureau** office located at 41228 12th Street West, Suite A, Palmdale, CA 93551. Please include your name, name of school, school address, grade level, and email address.

Winner The teacher of the winning class entry will be notified April 30, 2008. Your students will receive an EarthBox, so that they can experience firsthand the benefits of agriculture by producing their own fruits and vegetables. Visit <http://www.earthbox.com/> for more information.

Through the EarthBox, students can learn to: improve their nutritional intake, learn responsibility (as they take turns to care and maintain the garden), and develop an interest in diverse subject matters as they start to expand their gardening knowledge.

In addition, the **Los Angeles County Farm Bureau** will donate \$100 for additional gardening items. The winning entry will also be featured on the cover of our electronic newsletter.

Questions? Please contact the **Los Angeles County Farm Bureau** office staff at 661-274-9709. You can also visit our website at www.lacfb.org for more information; as well as educational resources and (coming soon) multi-media content.



"Imagine this" Writing Contest Winners

Article contributed by Kelly Cormier~Program coordinator for the California Foundation for Agriculture in the Classroom

These regional winners will receive a plaque, and an agriculture-themed book suited to their grade level, and winning teachers will receive free resources from Ag in the Classroom.

Regional winners from LA County are as follows:

Los Angeles County

The Farmer's Market

by Zoe Dorothy, 3rd Grade
Rosecrans Elementary - Stanley Jones, Teacher

The Boy and His Figs

by Cameron Ybarra, 4th Grade
Fred Ekstrand Elementary - Catherine Rojas, Teacher

Boll Weevil Go

by Cole Horrigan, 4th Grade
Tujunga - Deanna Bowers, Teacher

Number Two Visits Art Class

by Alison Klein, 7th Grade
San Gabriel Christian School - Vickie Zertuche, Teacher

A Journey Through Paper

by Matthew Yeung, 7th Grade
San Gabriel Christian School - Clarence Atwater, Teacher

**Allied
Insurance**a Nationwide® company
On Your Side®**John Valentine**
Director, Sponsor
Relations Nationwide
Insurance**Nationwide®**
On Your SideContact John via email at:
Valentj4@nationwide.com**State Fund for county Farm Bureaus****January 2008****Forklifts aren't toys—use care with and around them**

By Brian Watson ~Farm Bureau Group Manager

There's a conception around warehouses that forklift drivers have some of the most exciting jobs in the place—sitting in the cab and zipping at top speed here and there picking up and delivering loads. While these jobs are certainly interesting, operating a forklift requires maturity and training; and so does working around them.

According to the federal Occupational Safety and Health Administration (OSHA), there are more than a million forklifts in operation in the United States on any given day. In agriculture, the use of forklifts intensifies during late fall and winter months after most crops are harvested. With this increased activity comes an increased safety hazard for both the forklift operator and others in the vicinity, primarily other workers.

Every year, there are about 100 fatalities in the United States involving forklifts and nearly 100,000 others are injured. These statistics serve to remind us of the importance of the forklift operator being properly trained in its operation. Take the time to train operators in proper procedures. Training should include practice sessions under the supervision of a qualified trainer on load handling, maneuvering, traveling, stopping and starting.

Here are some basic safety rules from OSHA that should be required reading for anyone who works on or around forklifts:

- Forklifts are to be driven only by **trained and competent operators** acting under proper authority.
- Operators must **check that their forklift is in good working condition and has been properly maintained.**
- **Always use the seatbelt or operator-restraining device.** Keep all parts of the body inside the running lines of the truck.
- **Look all around** you before moving.
- **Face the direction of travel.** Look backward before reversing.
- **Only carry loads for which the forklift is designed and rated.** Check the load plate before picking up a load.
- **Never drive with faulty brakes.**
- **Avoid sudden starts, stops or turns.**
- **Drive slowly** on wet or slippery surfaces and rough terrain.
- **Don't drive with forks raised.** Keep them just clear of the ground and tilted slightly back.
- **Slow down or stop when vision is impaired.**
- **Do not work under suspended loads** due to risk of hydraulic failure.
- **When climbing or descending inclines, the load should always be uphill.** Never drive a forklift across an incline.
- **Do not park on a slope.** Never leave a forklift unattended without lowering the forks, setting the brake, neutralizing controls, shutting off power and removing ignition key.
- And most important, **No passengers.**

Good safety practices pay huge dividends to employers and employees and poor safety practices come at a tremendous cost to all concerned. Emphasize safety at all times and assist that others around you do the same.

Insurance Programs**Nationwide Health Plans**

The Farm Bureau Members' Health Program has provided affordable, high-quality health insurance to California Farm Bureau members since 1947. **Call your Nationwide agent at (877) 234-2727 for more information, or visit the Web site at www.nhpcalifornia.com.**

Allied Insurance

Allied Insurance provides quality insurance products and On Your Side service to individuals, families, farms and businesses. Customers know the Allied name represents quality insurance and outstanding service at a fair price. **Personal Auto ~Farm Bureau members receive a 7 1/2 percent discount on Allied's personal auto insurance. Search the Allied Agent Locator (<http://www.cfbf.com/farmagents/>) for an agent near you or call (800) 282-1446.**

STATE FUND & FARM BUREAU—
A LONG-STANDING
PARTNERSHIP SINCE 1943.**WHAT'S ONE
WITHOUT
THE OTHER?**

To be successful in agriculture today you've got to have both feet firmly planted on the ground. We know that because for more than 60 years we've stood side by side with California's farmers. Our rock-solid partnership with the Farm Bureau has helped make State Fund one of the most stable and secure workers' compensation insurers in the state.

To see why so many farmers find us a good fit, talk to your broker, or give us a call at 1-800-773-7667.

**STATE
COMPENSATION
INSURANCE
FUND**

www.scif.com

*Become a
Farm
Bureau
Member!*



**Please call :
1-800-698-3276
today!**

Faces of LACFB

◀ 07 *Rewind* ▶▶



May 2007

Trip to Washington, DC

A trip that was hosted by the CA Farm Bureau Federation for county Farm Bureau directors so that they could meet legislators and learn more about national farming issues.

Cherry Festival

Local festival attended by the LACFB to promote FB membership.



June 2007

San Fernando Valley Fair ~Junior Livestock Show and Auction

Add-on donations for students' livestock animals



August thru September 2007

Antelope Valley Fair

Agricultural displays promoting the Farm Bureau

Junior Livestock Show and Auction

Add-on donations for students' livestock animals

Kid's Day

Interactive, agricultural related demonstrations



September 2007

Los Angeles County Fair

Agricultural display themed Barnyard Classroom

Kid's Day

Interactive, agricultural related demonstrations



October 2007

Agriculture in the Classroom Conference in Asilomar, CA

LACFB Annual Dinner at Golden Oak Ranch



November 2007

A Taste of CA Event

Alhambra Unified School District

Nutrition Network



December 2007

CFBF Annual Convention

The convention is an annual gathering of the County Farm Bureaus, so that the farmers throughout the state can discuss and promote farming policies and definitions.



Kid's Day ~ Hamburger Demo
Teaching kids about how much water is needed to grow the various aspects of a hamburger
Executive Director~Laura Blank (on left).
Education Coordinator~Victoria Gerginis (on right).

Our office would like to extend our best wishes for a happy and healthy **2008**. We look forward to meeting you on our upcoming events. Please visit our website for more information: <http://www.lacfb.org/events.html>



Another Farm Bureau year has come to a close. The Annual Meeting in Reno, held in early December, brings to a close the process for policy development for all Farm Bureau Counties and Committees. This year we had very little that impacted policies on a larger scale ... we have refined our policy book so well that from year to year we have little that needs to be added or changed. This shows strong grass roots efforts on the part of County Farm Bureau Board of Directors, as well as the statewide committees, that develop policies throughout the year.

Beginning in February, we will start the process all over again. The Commodity Advisory Committees will meet to discuss current issues and review their specific commodity policies. Issues such as labor, water, land use, and property rights are all common to all commodities; each crop has its own specific issues within the Farm Bureau family, so these meetings allow members to voice their concerns and get the policy process moving forward. Making recommendations for policy change at the Commodity Advisory Committee meetings is primary to keeping our policy book current and reflective of our industry environment.

This year at the Annual Meeting the House of Delegates passed a resolution asking the Farm Bureau Board of Directors to create a new committee dealing with energy. President Doug Mosebar will be reviewing this resolution with the Executive Committee, and a process for moving forward will be outlined to the Board. This Committee will deal with the regulatory process that faces our energy providers, electrical rate issues, and fuel costs.

Centered around the Commodity Advisory Committee meetings will be the Farm Bureau Leadership Conference. Held in Sacramento, this is a great time to receive current information on issues and regulations, as well as visit your elected representatives at the Capitol. This one-day event sets the tone for our legislative session for the spring, and offers us all an opportunity to interact with the process. I urge every County Board Member to consider attending this event, even if you are not currently on a Commodity Advisory Committee; if you are interested in participating, please contact the Farm Bureau office for details; date of the Leadership Conference is February 26th.

As we move into a new year of policy development, all Farm Bureau members should participate in this process to ensure that your voice is heard.

We are only as strong as our members are individually.

Allied Insurance
a Nationwide® company
On Your Side®

Kick back and enjoy the ride.

Discover where independence can take you.

Life's a trip and your car gets you there. Wouldn't it be great if you could count on being worry-free along the way.

With Allied Insurance you'll get:

- Proven, reliable coverage for most drivers
- Affordable prices that won't break the bank
- Friendly, personal service with no hassles

Visit alliedinsurance.com to find a local, independent agent in your area.

7.5% discount
for Farm Bureau® members in California

*Become a
Farm Bureau
Member!*

1-800-698-3276

Advertising Arena

Your Business Card Here!



YOUR BUSINESS CARD OR AD COULD GO HERE!

Please call **661.274.9709** to place an ad today

Livestock

J and J Farms



Show Pigs & Butcher Pigs
(661) 943-4558

Marketing / Media

Eye-Appeal Media
A Full Service Video Production Company



Infomercials Weddings Post Production
Commercials Special Events Audio, CD, DVD & Video Duplication
Corporate Promos Family Video History DVD Transfer Service

7220 Owensmouth Avenue Suite #213 • Canoga Park, California 91303
818.704.6990 www.EyeAppealMedia.com

Automotive

FARM BUREAU® POWER. DODGE BONUS SAVINGS. **\$500**



Announcements



The Most Bountiful Place On Earth
June 25-28 • Orange County, California

2008 NATIONAL AITC CONFERENCE

Mortgage Services

Symphony Mortgage COMPANY

FOR ALL YOUR MORTGAGE FINANCING NEEDS

100% Financing? IT'S OK	Credit Not Perfect? IT'S OK
First Time Homebuyer? IT'S OK	Cash Out Refi? IT'S OK
Manufactured Home in A Park? IT'S OK	Commercial Loans, even if you don't own the building? IT'S OK

Call John Severino (866) 473-8374
(866) 4SEVERINO Today
www.symphonymortgagecompany.com
CA Dept. of Real Estate #91891887 - Programs and prices subject to change

Employment Opportunities

Please contact our office at 661. 274. 9709 if you are a Farm Bureau Member that would like to post a job description here

Tools

CHARLIE'S MOBILE TOOLS

Wholesale & Retail Olympia Tools

Cell (818) 929-2460	Services
Office (818) 949-4424	Cat Skid Steers
FAX (818) 949-4414	Bobtail Dump
Pager (888) 520-1972	

www.CharliesMobileTools.com


Financial Services

GORDON ELDER, CFP®
Financial Planning for Women

COMPREHENSIVE • FEE-BASED

- Financial Planning
- Portfolio Management

FOR A SELECT CLIENTELLE
Visit: www.gordonelder.com




CA Insurance License # 0558562

PHONE 661.940.7977 ADDRESS 44345 Lowtree Avenue, Lancaster, CA 93534

Registered Principal offering Securities and Advisory Services through United Financial Planning Services of America, a Limited Partnership. Member NASD, SIPC, CFP and CERTIFIED FINANCIAL PLANNER™ professional and certification marks owned by the Certified Financial Planner Board of Standards, Inc.

Advertise Here!



Call (661) 274-9709 to advertise on this page!!!

Tractor

B.Mo's Tractor Sales

Branson TRACTORS



Bennie Moore OWNER
Bus: 861-724-1014
Cell: 861-492-6150

24826 Ave. D Hwy 158 W. Lancaster, CA 93536
EMAIL: BRANSONTRACTORS@AOL.COM

California Foundation for Agriculture in the Classroom

Missed the last conference. Don't worry. Join us in Costa Mesa by visiting the cfaitc website.



www.cfaitc.org

Costa Mesa~

National AITC Conference

June 25-28, 2008

Hilton Costa Mesa

Costa Mesa, CA

Orange County



Los Angeles County Farm Bureau

BUSINESS MEMBER

Agricultural Colleges

Cal Poly Pomona
3801 West Temple Ave
Pomona, CA 91768
(909) 869-2189

BREEDERS

J and J Farms
Post Office Box 3427
Lancaster, CA 93586
(661) 943-4558
E-mail: lmbquilts@verizon.net

CONVENTION CENTER

Calamigos Ranch
327 S. Latigo Canyon
Malibu, CA 90265
(800) 821-2097
(818) 879-8130 FAX
www.calimigos.com

DODGE DEALERS

H.W. Hunter, Inc.
1130 Auto Mall Drive
Lancaster, CA 93534
(661) 948-8411

Superior Chrysler Jeep Dodge
17621 E. Gale Ave.
City of Industry, CA 91748
(626) 968-1515
<http://www.superiorchrysler.com/>

ENGINEERING

Barry Munz
129 West Pondera St.
Lancaster, CA 93534
(661) 948-0805

FARMS / RANCHES

Alesso Farms
P.O. Box 398
Rosamond, CA 93560
(661) 256-0933

Bench Ranch
Michael Bench
7200 West Ave H
Lancaster, CA 93536
(661) 949-9999

Forrest Godde
P.O. Box 1152
Lancaster, CA 93584
(661) 940-3190

FEED & TACK

Hemme Hay & Feed
43719 N. Sierra Hwy
Lancaster, CA 93534
(661) 942-7880

FINANCIAL

Gordon Elder, CFP ®
Certified Financial Planner Professional
44345 Lowtree Ave
Lancaster, CA 93534
(661) 940-7977
www.gordonelder.com

Gary Rardon and Associates
412 Westlake Drive
Palmdale, CA 93551
661-272-5672
E-mail: Gary.rardon@jpl.com

FLORIST

Palmdale-Lancaster Florist
1649 W Ave J
Lancaster, CA 93534
(661) 723-7673

GROCERY SUPPLIERS

Antelope Valley Produce
206 West Nugent
Lancaster, CA 93534
(661) 942-5939

OTHER ORGANIZATIONS

50th District Agricultural Association
2511 West Avenue H
Lancaster, CA 93536
(661) 948-6060

Antelope Valley Air Quality Management District
43301 Division Street , #206
Lancaster, CA 93535
(661) 723-8070

SUPPLY COMPANIES

Distribution Supply Tech
4820 Lanier Road
Chino, CA 91710
(909) 627-3638

WELLS & PUMPS

DRC Pump Systems, Inc.
44434 90th Street East
Lancaster, CA 93535
(661) 946-9444

Rottman Drilling
46471 N. Division Street
Lancaster, CA 93535
(661) 942-6125
E-mail: rdrilling@msn.com

VARIOUS BUSINESSES

Billet Barn & Corral
48430 85th Street West
Lancaster, CA 93536
(661) 945-1249
www.billetsteel.com
E-mail: barnguy@direcway.com

Bennie E. Moore
48141 3 Points Road
Lake Hughes, CA 93532
(661) 724-1014

January Creations Inc
1475 Chastain Pkwy W
Pacific Palisades, CA 90272
310-230-1100

Edison International
George Becker
3738 Barry Ave.
Los Angeles, CA 90066
(626) 302-2216

Ray Martin
PO Box 114
Valyermo, CA 93563
(661) 435-9950

Support our Los Angeles County Farm Bureau Members