

County of Los Angeles

Agricultural Commissioner/Weights and Measures



1998 Crop Report



COUNTY OF LOS ANGELES

Department of Agricultural Commissioner and Weights and Measures

Cato R. Fiksdal
Agricultural Commissioner/
Director of Weights and Measures

3400 La Madera Avenue
El Monte, California 91732

Robert G. Atkins
Chief Deputy

William J. Lyons, Jr., Secretary
California Department of Food and Agriculture
and
The Honorable Board of Supervisors
County of Los Angeles

Don Knabe, Chair - Fourth District

Gloria Molina - First District

Yvonne Brathwaite Burke - Second District

Zev Yaroslavsky - Third District

Michael D. Antonovich - Fifth District

1998 CROP REPORT

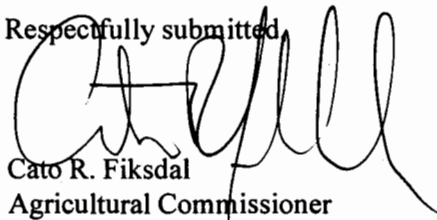
Agricultural production in Los Angeles County continues to rebound. The total value of crops and agricultural products produced in Los Angeles County climbed to **\$260,518,300** in 1998, up 9.5% from a year ago and up 24% from three years ago. Acreage in vegetable crops has been increasing dramatically, primarily in Antelope Valley where acreage increased from just under 3,000 acres three years ago to 8,700 acres today. Overall, nursery products continue to lead the way with a gross value of over \$185 million dollars. Increases were also seen in onions, root vegetables, herbs, table greens, and peaches.

Although considered a major metropolitan county with 9.5 million residents, Los Angeles County produces more than 25 varieties of crops including 17 million-dollar crops: ornamental plants, bedding plants, onions, root vegetables, peaches, foliage indoor plants, alfalfa hay, herbs, strawberries, flowering indoor plants, nectarines, honey, ground covers, rangeland, table greens, vine crops, and grain hay.

The production values in this report represent gross values and do not reflect the cost of production, net income or loss to producers.

I wish to express my sincere appreciation to all of the nursery owners, growers, governmental and private agencies who contributed and provided information necessary for this report.

Respectfully submitted,

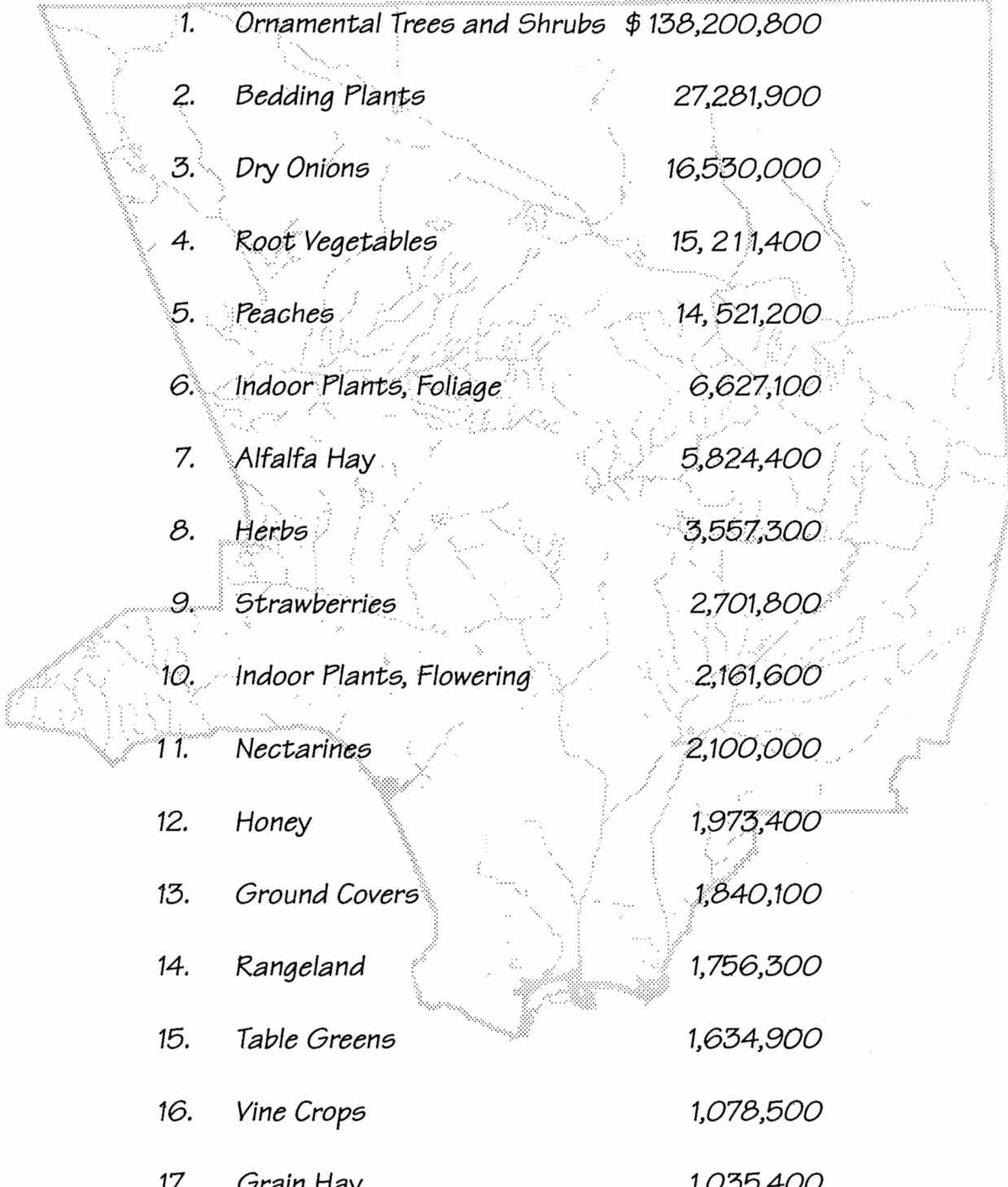


Cato R. Fiksdal
Agricultural Commissioner

This annual publication presents statistical information on acreage, yield, and gross value of agricultural products produced in Los Angeles County in accordance with Sections 2272 and 2279 of the California Food and Agricultural Code.

Cover: Horticultural Inspector (in straw hat) checking roadside produce stand in 1920's

Million Dollar Crops



1.	Ornamental Trees and Shrubs	\$ 138,200,800
2.	Bedding Plants	27,281,900
3.	Dry Onions	16,530,000
4.	Root Vegetables	15,211,400
5.	Peaches	14,521,200
6.	Indoor Plants, Foliage	6,627,100
7.	Alfalfa Hay	5,824,400
8.	Herbs	3,557,300
9.	Strawberries	2,701,800
10.	Indoor Plants, Flowering	2,161,600
11.	Nectarines	2,100,000
12.	Honey	1,973,400
13.	Ground Covers	1,840,100
14.	Rangeland	1,756,300
15.	Table Greens	1,634,900
16.	Vine Crops	1,078,500
17.	Grain Hay	1,035,400

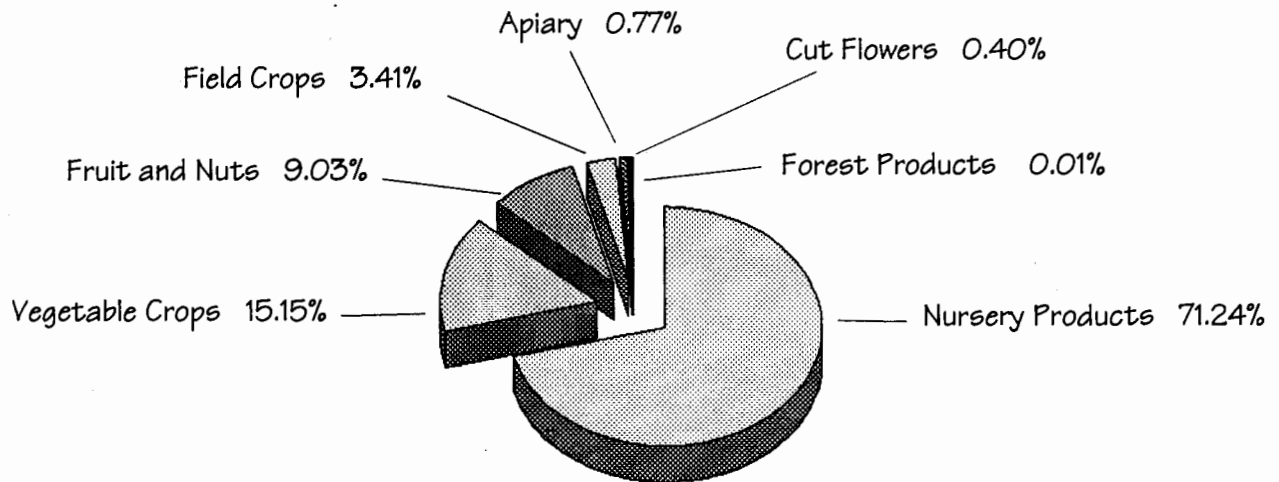
Summary

Commodity	1996	1997	1998
Nursery Products	164,633,028	171,220,605	185,592,500
Vegetable Crops	25,546,133	33,414,024	39,458,900
Fruit and Nuts	16,825,475	21,268,400 *	23,513,700
Field Crops	9,369,999	9,494,247	8,890,900
Apiary	4,277,690	1,164,128	1,995,100
Cut Flowers and Decoratives	<u>1,452,564</u>	<u>1,356,176</u>	<u>1,052,100</u>
Subtotal	222,104,889	237,917,629 *	260,503,200
Forest Products	<u>133,561</u>	<u>39,801</u>	<u>15,100</u>
Grand Total	\$222,238,450	\$237,957,430 *	\$260,518,300

* Revised

Crop Value Summary

Total Value \$260,518,300



Nursery Products

<u>Item</u>	<u>Year</u>	<u>Green House Sq. Ft.</u>	<u>Field Acres</u>	<u>Total Value</u>
Ornamental Trees and Shrubs	1998	7,878,826	1,782	\$138,200,800
	1997	7,033,613	1,712	\$128,688,800
Bedding Plants	1998	1,138,210	92	\$27,281,900
	1997	1,383,930	114	\$23,443,400
Indoor Plants, Foliage	1998	322,093	1	\$6,627,100
	1997	832,064	3	\$7,072,600
Indoor Plants, Flowering	1998	135,040	5	\$2,161,600
	1997	524,100	6	\$3,418,100
Ground Covers	1998	1,863,980	26	\$1,840,100
	1997	914,085	24	\$1,661,500
Miscellaneous	1998	2,973,037	326	\$9,481,200
	1997	3,043,694	326	\$6,936,200
Includes vegetable plants, orchids, cacti, and sod.				
TOTAL	1998	14,311,186	2,232	\$185,592,500
	1997	13,731,486	2,185	\$171,220,600

Vegetable Crops

Crop	Year	Acreage	Production		Unit	Value	
			Per Acre	Total		Per Unit	Total
Dry Onions	1998	2,425	24.23	58,750	Ton	\$281	\$16,530,000
	1997	1,932	24.81	47,930	Ton	\$319	\$15,276,400
Root Vegetables	1998	5,252	Includes carrots, beets, and daikon.				\$15,211,400
	1997	3,822					\$10,747,100
Herbs	1998	443	Includes cilantro, parsley, and other herbs.				\$3,557,300
	1997	124					\$1,823,700
Table Greens	1998	204	Includes leaf lettuce, spinach and oriental specialties.				\$1,634,900
	1997	292					\$1,382,900
Vine Crops	1998	239	Includes pumpkins, cucumbers, tomatoes, and squash.				\$1,078,500
	1997	270					\$1,174,800
Miscellaneous	1998	259	Includes sweet corn, leeks, bell peppers, and green onions.				\$1,446,800
	1997	660					\$3,009,000
TOTAL	1998	8,822					\$39,458,900
	1997	7,100					\$33,414,000

Fruit and Nut Crops

Crop	Year	Acreage	Production		Unit	Value	
			Per Acre	Total		Per Unit	Total
Peaches	1998	901	15	13,201	Ton	\$1,100	\$14,521,200
	1997	651	17	11,002	Ton	\$1,000	\$11,001,800
Strawberries	1998	129	22	2,789	Ton	\$969	\$2,701,800
	1997	148	23	3,404	Ton	\$1,100	\$3,744,400
Nectarines	1998	110	16	1,800	Ton	\$1,166	\$2,100,000
	1997	110	18	2,000	Ton	\$1,100	\$2,200,400
Apples	1998	75	8	630	Ton	\$1,214	\$765,000
	1997	71	9	631	Ton	\$1,396	\$880,600
Pears, Bartlett	1998	40	9	360	Ton	\$1,300	\$468,000
	1997	40*	8	320	Ton	\$1,500	\$480,000*
Cherries	1998	150	1	113	Ton	\$3,500	\$395,500
	1997	140	1	144	Ton	\$3,472	\$500,000
Avocados	1998	87	4	341	Ton	\$1,097	\$373,500
	1997	153	4	627	Ton	\$1,400	\$878,200
Grapes	1998	74	7	544	Ton	\$682	\$371,000
	1997	45	7	315	Ton	\$898	\$283,000
Miscellaneous	1998	201	Includes citrus, plums, and other fruits and nuts.				\$1,817,800
	1997	246*					\$1,300,100*
TOTAL	1998	1,768					\$23,513,700
	1997	1,589*					\$21,268,400*

* Revised

Field Crops

Crop	Year	Acreage	Per Acre	Production		Value	
				Total	Unit	Per Unit	Total
Alfalfa Hay	1998	5,270	8	41,849	Ton	\$139	\$5,824,400
	1997	5,465	8	46,196	Ton	\$149	\$6,898,500
Grain Hay	1998	2,717	4	9,813	Ton	\$106	\$1,035,400
	1997	2,742	2	5,338	Ton	\$116	\$619,600
Rangeland	1998	250,180					\$1,756,300
	1997	250,182					\$1,556,800
Miscellaneous	1998	1,210*					** \$274,800
	1997	1,191*					** \$408,900
TOTAL	1998	9,197***					\$8,890,900
	1997	11,335***					\$9,370,000

* Acreage excluding stubble
 ** Value includes barley grain, sudan hay, irrigated pasture and grazing privileges on stubble.

*** Excluding rangeland and stubble.

Cut Flowers and Decoratives

Item	Year	Green House Sq. Ft.	Field Acres	Quantity		Value	
				Sold	Unit	Per Unit	Total
Christmas Trees	1998		86	11,711	Tree	\$30	\$354,100
	1997		63	16,454	Tree	\$28	\$464,500
Pompom	1998	100,000		70,468	Bunch	\$2	\$139,700
	1997	100,000		16,639	Bunch	\$7	\$111,500
Miscellaneous	1998	117,613	67	Includes lilacs, mums, snapdragon, yarrow, gypsophila, carnation, delphinium, and all other cut flowers.			\$558,400
	1997	66,500	125				\$780,200
TOTAL	1998	217,613	153				\$1,052,100
	1997	166,500	188				\$1,356,200

Apiary Products

<u>Item</u>	<u>Year</u>	<u>Production</u>	<u>Unit</u>	<u>Per Unit</u>	<u>Value</u>	
						<u>Total</u>
Honey	1998	3,036,000	Lb.	\$.65	* \$1,973,400	
	1997	1,518,000		\$.76	\$1,153,000	
Beeswax	1998	9,100	Lb.	\$2	* \$19,400	
	1997	4,550		\$2	\$9,700	
Pollination	1998	87	Hive	\$27	* \$2,300	
	1997	42		\$34	\$1,400	
Total	1998				* \$1,995,100	
	1997				\$1,164,100	

* Increase in production due mainly to weather effects of "El Nino"

Forest Products

<u>Item</u>	<u>Year</u>	<u>Production</u>	<u>Unit</u>	<u>Price</u>	<u>Value</u>
Plantation Christmas Trees	1998	12,611	Linear ft.	\$1.20	\$15,100
	1997	33,168		\$1.20	\$39,800

* Figures obtained from State Board of Equalization, Timber Tax System.

No timber or firewood reported in 1998

Sustainable Agriculture Reporting

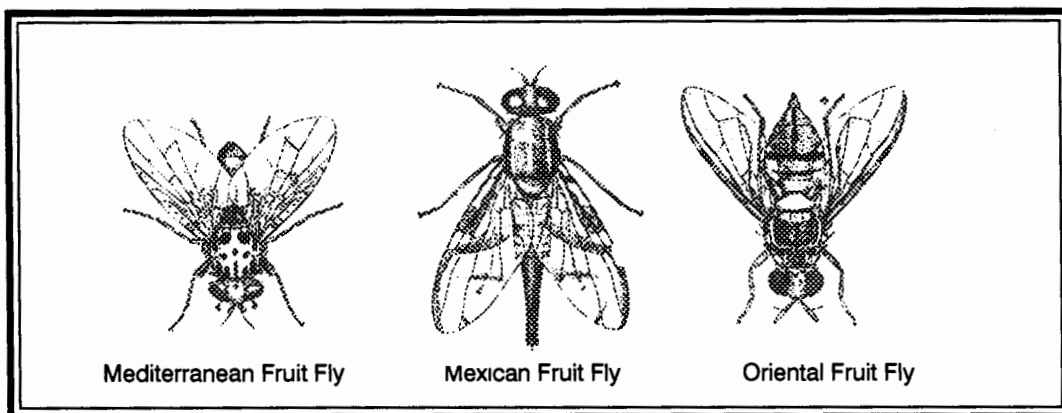
ORGANIC FARMING STATISTICS

Crop	Estimated Acres	
	1998	1997
Apples	23	5
Avocados	40	11
Cherries	19	19
Citrus	20	-
Grapes	25	25
Herbs (including sprouts)	11	56
Nectarines	4	4
Peaches	10	10
Asian Pears	5	8
Pears	2	2
Pistachios	40	-
Safflower	100	-
Misc. Trees	17	17
Vegetables (including Oriental & lettuce)	29	29
Total	<u>345</u>	<u>186</u>

	Farms	Acres
1998	28	345
1997	20	186

Pest Detection Activities

Pest	Number of Traps		Specimens Trapped
	Pest Detection	Pest Eradication	
Mediterranean Fruit Fly	5,008	0	0
Melon Fly	5,015	0	0
Oriental Fruit Fly	5,015	2,550	23
Mexican Fruit Fly	4,985	424	0
Gypsy Moth	3,703	0	0
Japanese Beetle	3,040	0	0
Khapra Beetle	310	0	0
Apple Maggot	135	0	0
Africanized Honey Bee	67	0	0
European Pine Shoot Moth	43	0	0
European Corn Borer	39	0	0
Olive Fruit Fly	0	1,705	164
Bactrocera facialis	0	1,625	1
Bactrocera latifrons	0	900	1
Anastrepha striata	0	240	1
Bactrocera correcta	0	75	1
TOTAL	27,360	7,519	191



Pest Eradication Activities

<u>Pest</u>	<u>Method</u>	<u>Scope of Program</u>
Mediterranean Fruit Fly	None - No Medfly Finds in 1998	
Mexican Fruit Fly	Sterile Flies Released Ground Based Malathion Foliar Treatments Gound Based Diazinon Soil Treatments Quarantine	240,343,000 Released 213 Properties Treated 2 Soil Treatments 62 Square Miles
Oriental Fruit Fly	Male Annihilation Treatments	9 Treatment Areas
Alligatorweed	Gross Area Inspected Hand Removal and Herbicide Treatment (Net Area)	5,798 Acres .01 Acre
Halogeton	Mechanical Control and Chemical Treatment	None *

* No plants were found during calendar year 1998.

Biological Control Activities

<u>Pest</u>	<u>Agent/Mechanism</u>	<u>Scope of Programs</u>
Mediterranean Fruit Fly	Sterile Releases	16,792,754,000 Sterile Medflies Released
Mexican Fruit Fly	Sterilie Releases	240,343,000 Sterile Mexflies Released

Pest Exclusion Activities

<u>Pest Exclusion Violations Issued</u>	<u>Number of Violations Issued</u>
Infested/Presumed Infested	158
Markings	97
Citrus Pests	69
Caribbean Fruit Fly	58
Plum Curculio and Blueberry Maggot	42
Failure to Hold	16
Burrowing and Reniform Nematodes	13
Cherry Fruit Fly	13
Nut Tree Pests	9
Mexican Fruit Fly	9
Japanese Beetle	6
Ozonium Root Rot	4
Peach Tree Diseases	4
Tomato Yellow Leaf Curl Virus	3
Sweet Potato Weevil	3
European Corn Borer	3
Imported Fire Ant	2
Lethal Yellowing of Palm	2
Gypsy Moth	2
FQ56 - Foreign Fruits & Vegetables	2
Cereal Leaf Beetle	2
6461.5 C - No Phytosanitary Certificate	1
Peach Rosette	1
Federal Section 103 - Presence of Live Insects	1
Cornstalk Borer	1
FQ 13 - No Limited Permit	1
Total	<u>522</u>

Pest Exclusion Activities

<u>Pest Intercepted</u> <u>Common Name / Genus species</u>	<u>Host</u>	<u>Source*</u>	<u>Scope of Program</u> <u>Pest Interceptions</u>
Africanized Honey Bee <i>Apis Mellifera scuetllata</i>	Feral swarm Feral colony In wall of apt. bldg. Oil refinery	Pub Det	10
Aphid <i>Greenidea formosana</i>	Guava <i>Melaleuca</i>	Nurs	4
Ant <i>Anoplolepis longipes</i>	<i>Chamaedorea seifrizi</i> Cut flowers	Quar	2
Australian lerp psyllid <i>Glycaspis brimblecombei</i>	<i>Eucalyptus camaldulensis</i> Eucalyptus <i>Eucalyptus rudis</i> <i>Eucalyptus viminalis</i> Loquat	Pub Det Nurs	12
Australian tortoise beetle <i>Trachymela sloanei</i>	<i>Eucalyptus camaldulensis</i> Eucalyptus	Det Pub	3
Avocado whitefly <i>Tetraleurodes perseae</i>	Avocado	Nurs	1
Azalea bark scale <i>Acanthococcus azaleae</i>	Azalea	Quar	1
Big headed ant <i>Pheidole megacephala</i>	Bamboo, Cut flowers Ginger, Hibiscus Pineapple, Pink ginger	Quar	6
Black headed ant <i>Tapinoma melanocephalum</i>	Cut flowers	Quar	1
Citrus leafminer <i>Phyllocnistis citrella</i>	Citrus (orange)	Quar	1
Coconut mealybug <i>Nipaecoccus nipae</i>	King palm	Nurs	1

Pest Exclusion Activities

<u>Pest Intercepted</u> <u>Common Name / Genus species</u>	<u>Material</u>	<u>Source*</u>	<u>Scope of Program</u> <u>Pest Interceptions</u>
Coffee root mealybug <i>Geococcus coffeae</i>	<i>Dracaena craig</i> Fishtail palm	Quar	2
Crazy ant <i>Paratrechina</i> sp.	Lemon grass	Quar	1
Croton whitefly <i>Orchamoplatus mammaeferus</i>	Cut greens	Quar	1
Cuban snail <i>Zachrysia provisoria</i>	<i>Dieffenbachia</i> <i>Dracaena marginata</i> <i>Ficus benjamina</i> <i>Phoenix roebelenii</i> <i>Schefflera</i>	Quar	9
Eucalyptus psyllid <i>Blastopsylla occidentalis</i>	Eucalyptus	Nurs	1
False chinch bug <i>Nysius</i> sp.	Orchids	Quar	1
Fig wax scale <i>Ceroplastes rusci</i>	Leaf, soil	Quar	1
Fruit fly <i>Bactrocera facialis</i>	Plum Fruit	Det	1
Giant whitefly <i>Aleurodicus dugesii</i>	Hibiscus	Nurs	1
Green scale <i>Coccus viridis</i>	Rambutan	Quar	1
Green shield scale <i>Pulvinaria psidii</i>	Brazilian pepper Eucalyptus, Ficus <i>Ficus benjamina</i> Gardenia, Guava Loquat, Palm <i>Plumeria</i> , Rambutan	Nurs Quar	32

Pest Exclusion Activities

<u>Pest Intercepted</u> <u>Common Name/Genus species</u>	<u>Host</u>	<u>Source*</u>	<u>Scope of Program</u> <u>Pest Interceptions</u>
Guava fruitfly <i>Bactrocera correcta</i>	Fig	Det	1
Gypsy moth <i>Lymantria dispar</i>	Wool	Quar	1
Howard scale <i>Abgrallaspis howardii</i>	Magnolia	Quar	1
Japanese beetle <i>Popillia japonica</i>	Turf	Det	1
Lesser snow scale <i>Pinnaspis strachani</i>	<i>Dracaena warnecki</i> Palm frond, Ti leaf	Nurs Quar	4
Leucaena psyllid <i>Heteropsylla cubana</i>	[unknown]	Nurs	1
Lycopodium mealybug <i>Pseucococcus lycopodii</i>	Lycopodium	Quar	1
Lygaeid bug <i>Nysius</i> sp.	Orchids	Pub	1
Magnolia white scale <i>Pseudaulacaspis cockerelli</i>	Areca palm Bird of Paradise Cut flowers, Palm Palm frond, Phoenix <i>Phoenix roebelenii</i> <i>Rhapis</i> , Ruscus <i>Strelitzia nicolai</i> , <i>Strelitzia</i>	Quar Nurs Det	29
Mealybug <i>Nipaecoccus</i> sp.	Fan palm, Palm Queen palm	Nurs	4
Mexican guava fruit fly <i>Anastrepha striata</i>	Loquat	Det	1

Pest Exclusion Activities

<u>Pest Intercepted</u> <u>Common Name / Genus species</u>	<u>Host</u>	<u>Source*</u>	<u>Scope of Program</u> <u>Pest Interceptions</u>
Mining scale <i>Howardia biclavis</i>	<i>Ficus benjamina</i> <i>Plumeria</i>	Nurs Quar	8
Olive fruit fly <i>Bactrocera oleae</i>	Citrus (lemon) Citrus (orange), Olive	Det	63
Orchid weevil <i>Orchidophilus alterrinus</i>	Cut flowers	Quar	1
Oriental fruit fly <i>Bactrocera dorsalis</i>	Citrus (lemon, tangerine) Guava, Nectarine, Peach, Plum, Sapote, Ornamental tree	Det	11
Oriental scale <i>Aonidiella orientalis</i>	Coconut	Quar	1
Parlatoria date scale <i>Parlatoria blanchardii</i>	Palm frond	Quar	1
Pickle worm <i>Diaphania nitidalis</i>	Cucumber (Indian) Pickling cucumber	Quar	2
Purple scale <i>Lepidosaphes beckii</i>	Citrus Citrus (lemon)	Nurs	2
Pyriiform scale <i>Protopulvinaria pyriformis</i>	Aralia, Champacha Eugenia, Gardenia <i>Laurus nobilis</i> , Leaves <i>Schefflera</i> , <i>Umbellularia laurel</i> <i>Umbellularia californica</i>	Nurs Quar	13
Red imported fire ant <i>Solenopsis invicta</i>	Cocos palm Cut flowers, Ficus Ground beside plants In ground In ground at electric tower Saline solution, Spanish moss Trailer, Truck	Nurs Quar Det Pub	12

Pest Exclusion Activities

<u>Pest Intercepted</u> <u>Common Name/Genus species</u>	<u>Host</u>	<u>Source*</u>	<u>Scope of Program</u> <u>Pest Interceptions</u>
Slug <i>Veronicella</i> sp.	<i>Sanseveria</i> <i>Dracaena</i> Soil, <i>Spathiphyllum</i> Taro leaves	Quar	5
Slug <i>Meghimatium striatim</i>	<i>Dracaena</i>	Quar	1
Snail <i>Lamellaxis</i> sp.	<i>Spathiphyllum</i>	Quar	1
Snail <i>Euglandina rosea</i>	<i>Chamaedorea</i>	Quar	1
Snail <i>Bradybaena similaris</i>	Aglaonema, Anthurium Aquatic plants <i>Brassaia actinophyll</i> <i>Chrysalidocarpus, Dracaena</i> <i>Dracaena marginata, Ficus</i> <i>Ficus benjamina, Leaves</i> <i>Phoenix roebelenii</i> <i>Ravenea rivularis, Schefflera</i> Soil, <i>Spathiphyllum</i> <i>Strelitzia</i>	Quar	33
Soil mealybug <i>Rhizoecus americanus</i>	<i>Ravenea rivularis</i> <i>Phoenix roebelenii</i> <i>Rhapis, Soil, Taro stalk</i>	Quar	7
Solanum fruit fly <i>Bactrocera latifrons</i>	Ornamental tree	Det	1
Southern green stink bug <i>Nezara viridula</i>	Sunflower	Pub	1
Spanish moss orthezia <i>Orthezia tillandsiae</i>	Spanish moss	Quar	1

Pest Exclusion Activities

<u>Pest Intercepted</u> <u>Common Name / Genus species</u>	<u>Host</u>	<u>Source*</u>	<u>Scope of Program</u> <u>Pest Interceptions</u>
Spiraling whitefly <i>Aleurodicus dispersus</i>	Betle leaves, Coconut <i>Dracaena</i> , Kentia palm Malangai leaves, Monstera Orchids, Taro leaves, Ti	Quar	21
Spiraling whitefly (egg tracks) <i>Aleurodicus dispersus</i>	Bamboo, Cut flowers Ginger, Leaf Malangai leaves, Ti	Quar	21
Tetranychid mite <i>Mononychellus caribbeanae</i>	<i>Erythrina</i>	Nurs	1
Torpedo bug (eggs) <i>Siphanta acuta</i>	Maille leaf	Quar	3
Torpedo bug egg mass <i>Siphanta acuta</i>	Herbs Podocarpus	Quar Nurs	3
Towsend scale <i>Abgrallaspis towsendi</i>	Magnolia	Quar	1
Tropical palm scale <i>Hemiberlesia palmae</i>	Bromeliads	Quar	1
Two spotted leafhopper <i>Sophonia rufofascia</i>	Bo tree, Brazilian pepper Cherry, Citrus <i>Clytostoma</i> , Curry leaves Cut flowers, <i>Fatsia japonica</i> Ficus, Gardenia, Guava King palm, <i>Laurus nobilis</i> Liquidambar, Loquat Magnolia, <i>Michelia</i> , <i>Philodendron</i> <i>Strelit</i> , <i>Pittosporum</i> , <i>Plumeria</i> Quince, Ti, <i>Viburnum</i>	Nurs Quar Det	48
Unknown Noctuid moth (eggs)	Basil	Quar	1
Unknown insect eggs	Cut flowers	Quar	1

Pest Exclusion Activities

<u>Pest Intercepted</u> <u>Common Name / Genus species</u>	<u>Host</u>	<u>Source*</u>	<u>Scope of Program</u> <u>Pest Interceptions</u>
White footed ant <i>Techmonyrmex albipes</i>	<i>Dracaena</i> , Coconut Cut flowers <i>Dracaena marginata</i> <i>Dracaena massangeana</i> Ficus, Ginger, Lalot <i>Plumeria</i> , <i>Schefflera</i> <i>Spathiphyllum</i> , Ti	Quar	13
Woolly whitefly <i>Aleurothrixus floccosus</i>	Citrus Guava, Quince	Det Nurs	3 <hr/>
		TOTAL	420 <hr/> <hr/>

* Source: Det: Detection Nurs: Nursery Pub: Public Quar: Quarantine

A special acknowledgement and thank you to our staff members: Dr. Rosser Garrison, Dave Kruger, Jim Wisemen, Paul Dufourd, Sherlan Neblett Bernhard, Ray Smith, Nancy Kellam, Chester Olsen, John Cervante, Gary Mork, Eric Hansen, Greg Creekmur, Paul White, Mary Anne Nolan and Julia Chen for collecting, compiling and computerizing the statistics and the report layout.



**Los Angeles County Agricultural Commissioner /
Weights and Measures Department
3400 La Madera Avenue
El Monte, California 91732**

