

County of Los Angeles

Agricultural Commissioner/Weights and Measures



1997

Crop Report



E. Leon Spaugy
Agricultural Commissioner/
Director of Weights and Measures

COUNTY OF LOS ANGELES

**Department of
Agricultural Commissioner
and Weights and Measures**

3400 La Madera Avenue
El Monte, California 91732

Cato R. Fiksdal
Chief Deputy

**Ann M. Veneman, Secretary
California Department of Food and Agriculture
and
The Honorable Board of Supervisors
County of Los Angeles**

Yvonne Brathwaite Burke, Chair - Second District

**Gloria Molina - First District
Zev Yaroslavsky - Third District**

**Don Knabe - Fourth District
Michael D. Antonovich - Fifth District**

It is my pleasure to submit the 1997 Los Angeles County Crop Report. This annual publication presents statistical information on acreage, yield, and gross value of agricultural products produced in Los Angeles County in accordance with Sections 2272 and 2279 of the California Food and Agricultural Code.

The overall gross value of agricultural crops and products produced in Los Angeles County for 1997 is estimated to be **\$237,207,430**. This represents a 6.8% increase from the estimated \$222,238,450 production in 1996.

Los Angeles County continues to rank as the second leading county in the State in the production of nursery plants and products with a gross value of 171.2 million dollars. Nursery production increased more than 4% in 1997. Increases also occurred in vegetable, fruit, nut, and field crops. Carrot acreage in the Antelope Valley continues to increase as more than 1,487 additional acres were planted in 1997.

Although considered a major metropolitan county with 9.5 million residents, Los Angeles County produces more than **25** varieties of crops including 16 million-dollar crops: ornamental plants, carrots, onion, strawberries, peaches, alfalfa hay, vine crops, table greens, honey, sweet corn, and nectarines.

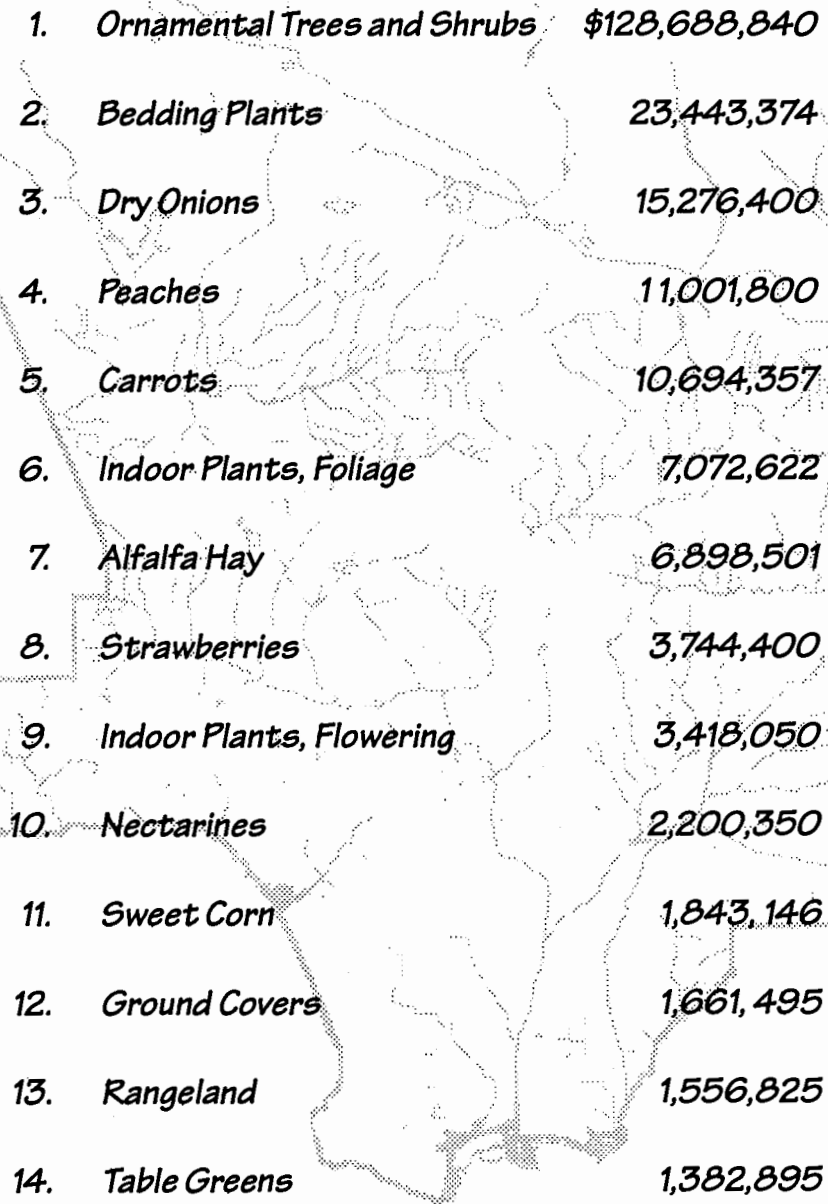
The production values in this report represent gross values and do not reflect the cost of production, net income or loss to producers.

I wish to express my sincere appreciation to all of the nursery owners, growers, governmental and private agencies who contributed and provided information necessary for this report.

Respectfully submitted,

E. Leon Spaugy, Agricultural Commissioner/
Director of Weights and Measures

Million Dollar Crops



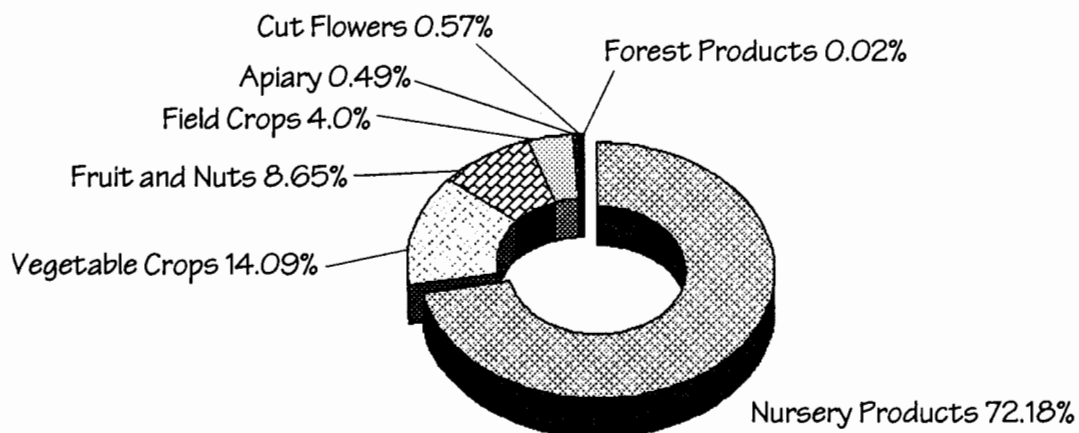
1.	<i>Ornamental Trees and Shrubs</i>	<i>\$128,688,840</i>
2.	<i>Bedding Plants</i>	<i>23,443,374</i>
3.	<i>Dry Onions</i>	<i>15,276,400</i>
4.	<i>Peaches</i>	<i>11,001,800</i>
5.	<i>Carrots</i>	<i>10,694,357</i>
6.	<i>Indoor Plants, Foliage</i>	<i>7,072,622</i>
7.	<i>Alfalfa Hay</i>	<i>6,898,501</i>
8.	<i>Strawberries</i>	<i>3,744,400</i>
9.	<i>Indoor Plants, Flowering</i>	<i>3,418,050</i>
10.	<i>Nectarines</i>	<i>2,200,350</i>
11.	<i>Sweet Corn</i>	<i>1,843,146</i>
12.	<i>Ground Covers</i>	<i>1,661,495</i>
13.	<i>Rangeland</i>	<i>1,556,825</i>
14.	<i>Table Greens</i>	<i>1,382,895</i>
15.	<i>Vine Crops</i>	<i>1,174,841</i>
16.	<i>Honey</i>	<i>1,153,000</i>

Summary

Commodity	1995	1996	1997
Nursery Products	154,687,653	164,633,028	171,220,605
Vegetable Crops	24,351,803	25,546,133	33,414,024
Fruit and Nuts	15,825,717	16,825,475	20,518,449
Field Crops	9,359,298	9,369,999	9,494,247
Apiary	3,227,350	4,277,690	1,164,128
Cut Flowers and Decoratives	2,221,078	1,452,564	1,356,176
Subtotal	209,672,899	222,104,889	237,167,629
Forest Products	177,850	133,561	39,801
Grand Total	\$209,850,749	\$222,238,450	\$237,207,430

Crop Value Summary

Total Value \$237,207,430



Nursery Products

<u>Item</u>	<u>Year</u>	<u>Green House Sq. Ft.</u>	<u>Field Acres</u>	<u>Total Value</u>
Ornamental Trees and Shrubs	1997	7,033,613	1,712	\$128,688,840
	1996	6,831,056	1,818.7	120,493,795
Bedding Plants	1997	1,383,930	113.9	23,443,374
	1996	680,150	99.8	23,104,690
Indoor Plants, Foliage	1997	832,064	3.2	7,072,622
	1996	1,384,300	17.9	10,646,559
Ground Covers	1997	914,085	23.8	1,661,495
	1996	836,200	42.8	2,381,199
Indoor Plants, Flowering	1997	524,100	6.1	3,418,050
	1996	291,240	7.3	2,101,644
Miscellaneous	1997	3,043,694	325.6	6,936,223
	1996	3,143,833	310.9	5,905,141
Includes vegetable plants, orchids, cacti, and sod.				
TOTAL	1997	13,731,486	2,184.6	\$171,220,605
	1996	13,166,779	2,297.4	164,633,028

Vegetable Crops

<u>Crop</u>	<u>Year</u>	<u>Acreage</u>	<u>Production</u>		<u>Unit</u>	<u>Value</u>	
			<u>Per Acre</u>	<u>Total</u>		<u>Per Unit</u>	<u>Total</u>
Dry Onions	1997	1,932	24.81	47,930	Ton	\$319	\$15,276,400
	1996	1,523.5	22.25	33,909		347	12,149,700
Carrots	1997	3,811	34.9	133,153	Ton	80	10,694,357
	1996	2,324	33.1	76,899		83	6,347,922
Sweet Corn	1997	453	8.45	3,826	Ton	\$482	1,843,146
	1996	504	6.10	3,075		480	1,478,856
Table Greens	1997	292	Includes leaf lettuce, spinach and Oriental specialties.				1,382,895
	1996	216					1,185,002
Vine Crops	1997	270	Includes pumpkins, cucumbers and tomatoes.				1,174,841
	1996	248					1,156,090
Root Vegetables	1997	11	Includes leeks and turnips (not carrots).				52,769
	1996	5					21,148
Miscellaneous	1997	331	Includes herbs, broccoli and edible flowers.				2,989,616
	1996	174					3,221,115
TOTAL	1997	7,100					\$33,414,024
	1996	4,995					\$25,559,833

Fruit and Nut Crops

Crop	Year	Acreage	Production		Unit	Value	
			Per Acre	Total		Per Unit	Total
Peaches	1997	651	16.90	11,002	Ton	\$1,000	\$11,001,800
	1996	650	15.00	9,752		966	9,421,834
Nectarines	1997	110	18.14	2,000	Ton	1,100	2,200,350
	1996	110	14.75	1,870		1,040	1,870,540
Strawberries	1997	148	23.00	3,404	Ton	1,100	3,744,400
	1996	186	22.53	2,600		1,442	2,149,634
Avocados	1997	153	4.10	627	Ton	1,400	878,220
	1996	153	7.46	804		1,207	1,094,770
Apples	1997	71	8.95	631	Ton	1,396	880,600
	1996	70	7.25	631		1,030	631,457
Plums	1997	28	12.00	336	Ton	1,190	400,150
	1996	28	11.00	308		1,300	400,461
Cherries	1997	140	1.00	144	Ton	3,472	500,000
	1996	140	.75	105		2,500	262,500
Miscellaneous	1997	218	Includes citrus, and other fruits and nuts.				912,929
	1996	220					994,279
TOTAL	1997	1,519					\$20,518,449
	1996	1,557					16,825,475

Field Crops

<u>Crop</u>	<u>Year</u>	<u>Acreage</u>	<u>Per Acre</u>	<u>Production</u>		<u>Value</u>	
				<u>Total</u>	<u>Unit</u>	<u>Per Unit</u>	<u>Total</u>
Alfalfa Hay	1997	5,465	8.45	46,196	Ton	\$149	\$6,898,501
	1996	5,566	7.80	47,714		110	6,856,588
Grain Hay	1997	2,742	1.95	5,338	Ton	116	619,632
	1996	1,900	2.50	4,100		95	435,500
Barley	1997	45	2.3	104	Ton	100	10,350
	1996	2,887	1.60	3,329		109	297,955
Miscellaneous	1997	1,191 *	Value includes sudan hay, irrigated pasture and grazing privileges on stubble.				408,939
	1996	982 *					362,381
Rangeland	1997	250,182					1,556,825
	1996	200,370					1,417,575
TOTAL	1997	9,443 **					\$9,494,247
	1996	11,335 **					9,369,999

* Excluding stubble.

** Excluding rangeland and stubble.

Cut Flowers and Decoratives

Item	Year	Green House Sq. Ft.	Field Acres	Quantity		Value	
				Sold	Unit	Per Unit	Total
Christmas Trees	1997		63	16,454	Tree	\$28.23	\$464,508
	1996		107	20,659		31.66	687,816
Lilacs	1997		50	31,250	Bunch	8.00	250,000
	1996		30	10,500		8.00	100,000
Chrysanthemums	1997	25,000	2				132,568
	1996	19,600	4				71,322
Pompom	1997	100,000		16,639	Bunch	6.70	111,481
	1996	97,000		15,557		6.60	102,676
Miscellaneous	1997	41,500	72.58	Includes snapdragon, gypsophila, carnation, delphinium, and all other cut flowers.			397,619
	1996	71,480	64.87				490,749
TOTAL	1997	166,500	187.58				\$1,356,176
	1996	285,080	174.04				1,452,563

Apiary Products

<u>Item</u>	<u>Year</u>	<u>Production</u>	<u>Unit</u>	<u>Per Unit</u>	<u>Value</u>	
						<u>Total</u>
Honey	1997	1,518,000	Lb.	\$.76		\$1,153,000
	1996	3,674,000		.85		3,122,900
Beeswax	1997	4,550	Lb.	\$2.13		\$9,700
	1996	11,750		2.00		23,500
Pollination	1997	42	Hive	\$34.00		\$1,428
	1996	27,260		41.50		1,131,290
Total	1997					* \$1,164,128
	1996					4,277,690

* Reduction due to adjustment in state-wide accounting practices.

Forest Products

<u>Item</u>	<u>Year</u>	<u>Production</u>	<u>Unit</u>	<u>Price</u>	<u>Value</u>
Plantation Christmas Trees	1997	33,168	Linear ft.	\$1.20	\$39,801
	1996	91,249			109,471

* Figures obtained from State Board of Equalization, Timber Tax System.

* No timber or firewood reported in 1997

Sustainable Agriculture Reporting

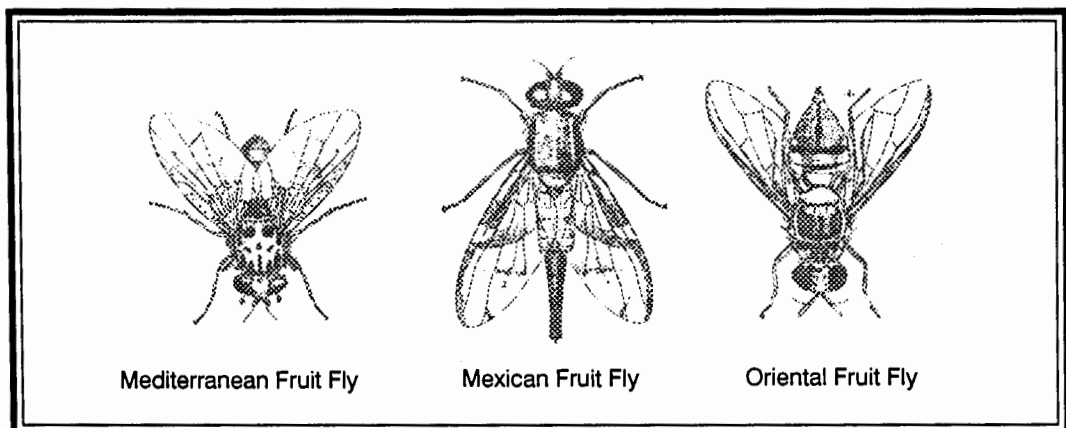
ORGANIC FARMING STATISTICS

<u>Crop</u>	<u>Estimated Acres</u>	
	<u>1997</u>	<u>1996</u>
Apples	5	8
Avocados	11	7
Peaches	10	10
Herbs (including sprouts)	56	56
Grapes	25	25
Cherries	19	19
Nectarines	4	4
Asian Pears	8	8
Pears	2	4
Vegetables (including Oriental & lettuce)	29	29
Misc. Trees	17	17
	<hr/>	<hr/>
Total	186	187
	<hr/> <hr/>	<hr/> <hr/>

	<u>Farms</u>	<u>Acres</u>
1997	20	186
1996	22	187

Pest Detection Activities

Pest	Number of Traps		Specimens Trapped
	Pest Detection	Pest Eradication	
Mediterranean Fruit Fly	5,087	154	23 Adults
Mexican Fruit Fly (Caribbean Fruit Fly)	5,016	1,969 (338)	5 Adults (1 Adult)
Oriental Fruit Fly	5,040	1,276	69 Adults
Melon Fly	5,043	576	1 Adult
Gypsy Moth	3,703	0	0
Japanese Beetle	2,917	0	0
European Corn Borer	8	0	0
European Pine Shoot Moth	15	0	0
Khapra Beetle	336	0	0
Africanized Honey Bee	67	0	0
Apple Maggot	64	0	0
TOTAL	27,296	4,313	99



Pest Eradication Activities

<u>Pest</u>	<u>Method</u>	<u>Scope of Program</u>
Mediterranean Fruit Fly	Steriles Released Ground Based Foliar Malathion Treatments Gound Based Soil Diazinon Treatments Quarantine Fruit Stripping Fruit Removal	15,638 Million Released 7,547 Properties Treated 100 Properties Treated 69 Sq. Miles 351 Properties 73 Properties, 10,599 Pounds
Oriental Fruit Fly	Male Annihilation Treatments Two Quarantines	8 Treatment Areas 101 and 61 Sq. Miles
Mexican Fruit Fly	Sterilies Released Ground Based Foliar Malathion Treatments Gound Based Soil Diazinon Treatments Quarantine	32 Million Released 178 Properties Treated 5 Properties Treated 62 Sq. Miles
Alligatorweed	Gross Area Inspected Herbicide Treatment (Net Area)	5,798 Acres .05 Acre
Halogeton	Mechanical Control and Chemical Treatment	None *

* No plants were found during calendar year 1997.

Biological Control Activities

<u>Pest</u>	<u>Agent/Mechanism</u>	<u>Scope of Programs</u>
Mediterranean Fruit Fly	(Steriles)	6,632.48 Million Sterile Fruit Flies Released
Mexican Fruit Fly	(Sterilies)	32 Million Released

Pest Exclusion Activities

<u>Pest Exclusion Violations Issued</u>	<u>Number of Violations Issued</u>
Infested/Presume Infested	163
Markings	88
Citrus Pests	51
Caribbean Fruit Fly	50
Burrowing and Reniform Nematode	17
Plum Curculio and Blueberry Maggot	13
Ozonium Root Rot	8
Walnut and Pecan Pests	6
Cherry Fruit Fly	5
Mexican Fruit Fly	4
Japanese Beetle	3
Imported Fire Ant	3
Colorado Potato Beetle	2
Persimmon Root Borer	2
European Corn Borer	2
Cedar-Apple Rust	1
Citrus Tristeza Virus	1
Cotton Pests	1
Hydrilla	1
Infested (Intrastate)	1
Mediterranean Fruit Fly	1
Peach Tree Diseases	1
Sweet Potato Weevil	1
	<hr/>
Total	425

Pest Exclusion Activities

<u>Pest Intercepted</u> <u>Common Name / Genus species</u>	<u>Material</u>	<u>Source*</u>	<u>Scope of Program</u> <u>Pest Interceptions</u>
Aphid	Guava	Quar	1
Moth (larva)	Longan	Quar	1
Moth eggs	Ti leaves	Quar	1
Stink bug (eggs)	Basil Ginger Taro	Quar	1
Citrus blackfly <i>Aleurocanthus woglumi</i>	<i>Mangifera indica</i>	Quar	2
Spiraling Whitefly <i>Aleurodicus dispersus</i>	Bamboo palm Basil Betel leaves <i>Chamaedorea seifrizi</i> Herbs Malangai leaves Philodendron <i>Rhapis</i> Ti leaves	Quar	54
A whitefly <i>Aleuropleurocelus</i> sp.	Guava	Nurs	2
Woolly Whitefly <i>Aleurothrixus floccosus</i>	Citrus (lemon) Citrus (orange) Guava Manilkara Zapota	Det Pub Nurs Quar	12

Pest Exclusion Activities

<u>Pest Intercepted</u> <u>Common Name/Genus species</u>	<u>Material</u>	<u>Source*</u>	<u>Scope of Program</u> <u>Pest Interceptions</u>
Mexican Fruitfly <i>Anastrepha ludens</i>	Citrus (grapefruit) Citrus (lemon) Sapote	Det	10
Caribbean Fruitfly <i>Anastrepha suspensa</i>	Citrus (orange)	Det	2
Coconut scale <i>Aspidiotus destructor</i>	Betle leaves	Quar	2
Melon Fruitfly <i>Bactrocera cucurbitae</i>	Peach	Det	2
Oriental Fruitfly <i>Bactrocera dorsalis</i> complex	Apple Apricot Citrus (grapefruit) Citrus (lemon) Citrus (orange) Citrus (tangerine) Eucalyptus Fig Guava Hibiscus Olive Ornamental tree Peach Sapote Avocado Feijoa	Det	92
Snail <i>Bradybaena similaris</i>	Areca palm <i>Chamaedorea</i> Soil <i>Chrysalidocarpus</i> <i>Cordyline terminalis</i>	Quar	64

Pest Exclusion Activities

<u>Pest Intercepted</u> <u>Common Name / Genus species</u>	<u>Material</u>	<u>Source*</u>	<u>Scope of Program</u> <u>Pest Interceptions</u>
	<i>Dracaena</i>		
	Ficus		
	<i>Ficus benjamina</i>		
	<i>Ficus robusta</i>		
	<i>Nephrolepis brassaia</i>		
	<i>Nolina recurvata</i>		
	<i>Phoenix roebelenii</i>		
	<i>Ravenea rivularis</i>		
	<i>Schefflera</i>		
	<i>Spathiphyllum</i>		
	Wing beans		
Carpenter ant <i>Camponotus floridanus</i>	Spathiphyllum <i>Litchi chinensis</i>	Quar Nurs	2
Medfly <i>Ceratitis capitata</i>	Citrus (grapefruit) Citrus (orange) Guava Peach	Det	60
Green scale <i>Coccus viridis</i>	Bamboo palm <i>Chamaedorea seifrizi</i>	Nurs Quar	4
Black stink bug <i>Coptosoma xanthogramma</i>	Malangai leaves	Quar	2
Leafhopper <i>Empoasca guevarai</i> or nr	<i>Platanus</i>	Nurs	2
Striped Mealybug <i>Ferrisia virgata</i>	<i>Dracaena concinna</i>	Quar	2

Pest Exclusion Activities

<u>Pest Intercepted</u> <u>Common Name / Genus species</u>	<u>Material</u>	<u>Source*</u>	<u>Scope of Program</u> <u>Pest Interceptions</u>
Coffee root mealybug <i>Geococcus coffeae</i>	<i>Chamaedorea seifrizi</i>	Quar	2
Snail <i>Lamellaxis</i> sp.	<i>Phoenix roebelenii</i> <i>Spathiphyllum</i>	Quar	8
A cricket	<i>Dracaena marginata</i>	Quar	8
Southern green stink bug <i>Nezara viridula</i>	Basil	Quar	4
Mealybug (Undescribed) <i>Nipaecoccus</i> sp.	Palm frond Queen palm	Nurs	10
Big headed ant <i>Pheidole megacephala</i>	Basil Betel leaves Cut flowers Ginger Orchids <i>Phoenix roebelenii</i>	Quar	20
Lesser snow scale <i>Pinnaspis strachani</i>	<i>Annona cherimola</i> <i>Chamaedorea seifrizi</i> <i>Dracaena</i> <i>Dracaena</i> Janet Craig <i>Dracaena marginata</i> <i>Dracaena</i> Michiko <i>Dracaena</i> sp. <i>Dracaena warnecki</i> Ginger <i>Murraya paniculata</i> <i>Rhapis</i>	Quar Nurs	44

Pest Exclusion Activities

<u>Pest Intercepted</u> <u>Common Name/Genus species</u>	<u>Material</u>	<u>Source*</u>	<u>Scope of Program</u> <u>Pest Interceptions</u>
Pyriform scale <i>Protopulvinaria pyriformis</i>	Bay leaves Gardenia <i>Umbellularia californica</i>	Nurs	8
Magnolia white scale <i>Pseudaulacaspis cockerelli</i>	Areca palm Bird of Paradise <i>Chrysalidocarpus</i> Cut flowers <i>Dracaena massangeana</i> Ginger Palm frond Palm leaf Palm- <i>Trachycarpus</i> <i>Phoenix roebelenii</i> <i>Rhapis</i> <i>Strelitzia</i>	Quar Nurs	42
Green shield scale <i>Pulvinaria psidii</i>	Brazilian pepper Eugenia Ficus <i>Ficus benjamina</i> Gardenia Pepper tree Queen palm	Nurs	32
Soil mealybug <i>Rhizoecus hibisci</i>	Ginger <i>Ravenea rivularis</i> <i>Rhapis</i>	Quar	8
Torpedo bug (larvae) <i>Siphanta acuta</i>	Cut flowers	Quar	2

Pest Exclusion Activities

<u>Pest Intercepted</u> <u>Common Name / Genus species</u>	<u>Material</u>	<u>Source*</u>	<u>Scope of Program</u> <u>Pest Interceptions</u>
Red imported fire ant <i>Solenopsis invicta</i>	Sealed trucks	Quar	10
Two spotted leafhopper <i>Sophonia rufofascia</i>	Calla lily Eugenia Guava Magnolia	Nurs	8
White footed ant <i>Technomyrmex albipes</i>	Betel leaves Cut flowers Guava Longan	Quar	10
Slug <i>Veronicella</i> sp.	<i>Dracaena</i> Polyscias	Quar	8
Cuban snail <i>Zachrysia provisoria</i>	<i>Aglaonema</i> <i>Ficus robusta</i> <i>Ravenea rivularis</i> <i>Schefflera</i> Wing beans	Quar	14
		TOTAL	556

* Source: Det: Detection

Nurs: Nursery

Pub: Public

Quar: Quarantine



This report was possible only through the cooperation of all the nursery owners, growers, governmental and private agencies, and others who provided the information necessary for its production.

A special acknowledgement and thank you to staff members Mary Anne Nolan and Julia Chen, for the report layout and for compiling and computerizing the statistics.



Los Angeles County Agricultural Commissioner
Weights and Measures Department
3400 La Madera Avenue
El Monte, California 91732

