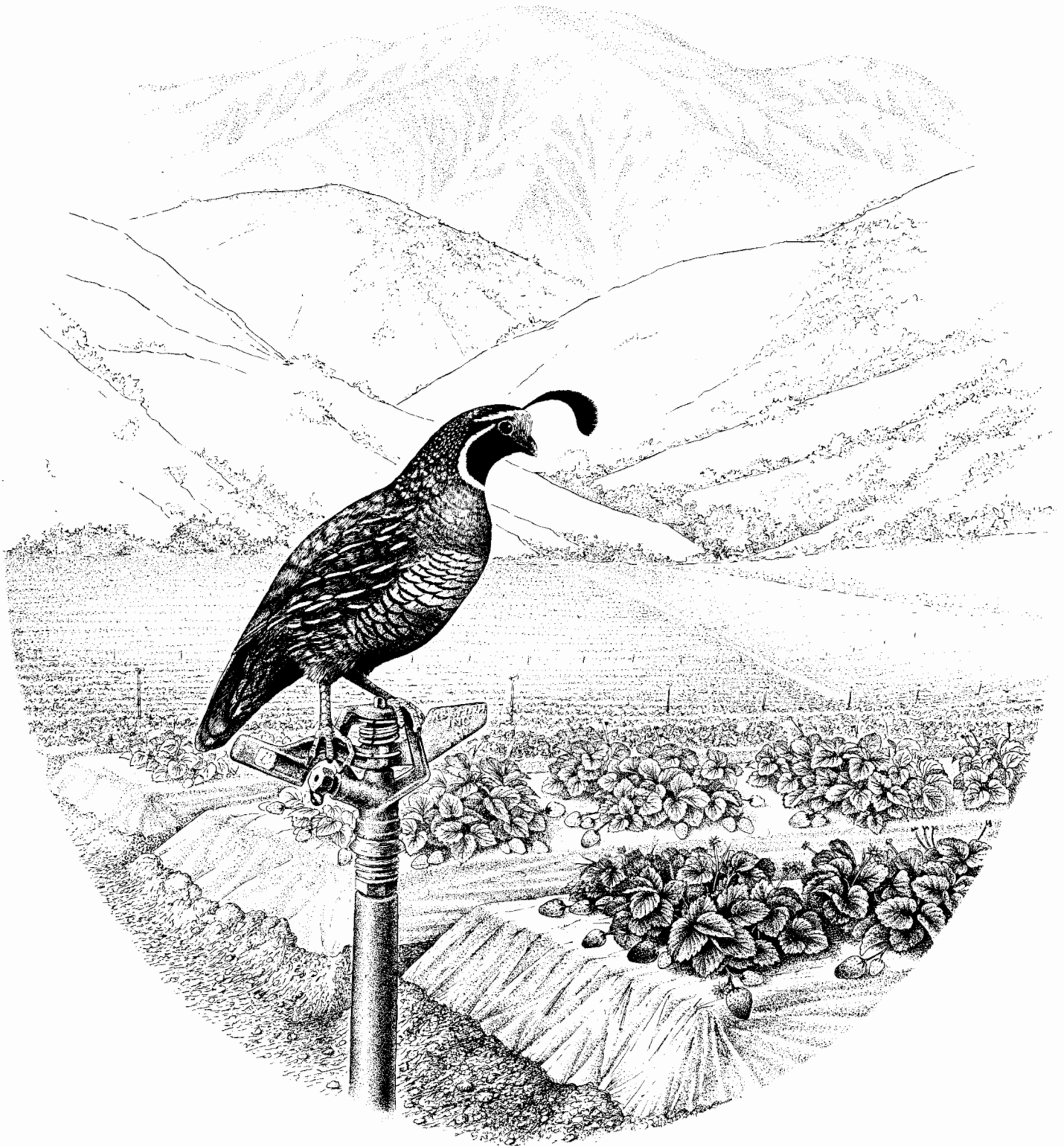


1991 Crop and Livestock Report



County of Los Angeles
Agricultural Commissioner/Weights & Measures Department



E. Leon Spaugy
Agricultural Commissioner/
Director of Weights and Measures

COUNTY OF LOS ANGELES

Department of
Agricultural Commissioner
and Weights and Measures

3400 La Madera Avenue
El Monte, California 91732

William A. Edwards
Chief Deputy

1991 CROP AND LIVESTOCK REPORT

Los Angeles County agriculture continued to hold its own in spite of the very tough economic and drought conditions of 1991. Gross production decreased slightly from the revised 1990 gross figure of \$238,027,400 down to \$235,867,000 for 1991.

Fruit and Nut crops showed an increase of \$1,233,000, up by 11%. This was attributed to the "March Miracle" of heavy spring rains, favorable growing conditions and increased berry acreage along with good market prices. Vegetable crops, likewise, increased markedly over the 1990 season with gross returns up \$4,626,000, an increase of 25%. Ideal weather during the onion growing season combined with a strong market was a major factor in this increase.

Nursery Products is the largest cash crop in Los Angeles County. Production turned slightly downward, losing \$6,449,000 from 1990. The recession economy, slow housing starts, drought and higher water bills all contributed to this 4% decrease. Cut flowers increased by \$904,000, representing a 54% increase over the previous year. This major increase was the result of additional Christmas tree acreage and corresponding sales. The general trend for cut flowers was increased profits.

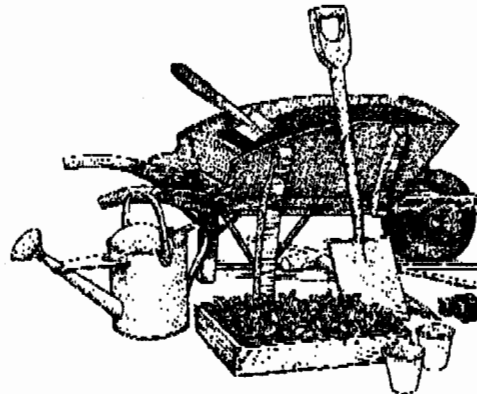
Field Crops dipped by \$984,000, down 12%, as a result of low hay prices and decreased dryland grain plantings due to the continuing drought. Apiary production soared with one of its best years. Honey production revenue was up by \$1,240,000 representing an increase of 354% over the previous year. Heavy spring rains and abundant forage for the bees made for ideal production conditions.

Despite economic conditions and the continuing drought, Los Angeles County Agriculture remains stable and continues to show strength. Overall, areas of decreased production were offset by increased production in others.

E. Leon Spaugy
Agricultural Commissioner/
Director of Weights and Measures

"Genius will live and thrive without training, but it does not the less reward the watering-pot and pruning-knife."

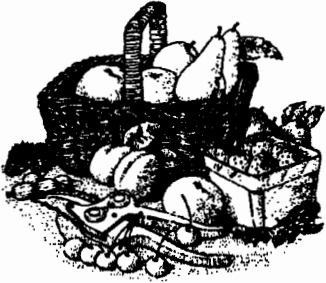
Margaret Fuller Ossoli 1810-1850



The Department would like to recognize and thank Raymond Smith for sharing his talent to create this year's distinctive and professional pen-and-ink cover art. Ray has volunteered many hours drawing the beautiful crop report covers for the past three years.

MILLION DOLLAR CROPS

1. Ornamental Trees and Shrubs	\$113,521,000	9. Ground Cover	3,624,000
2. Bedding Plants	22,395,000	10. Dairy Cattle	3,482,000
3. Dry Onions	13,182,000	11. Christmas Trees	1,591,000
4. Alfalfa Hay	5,556,000	12. Honey	1,590,000
5. Peaches	5,448,000	13. Table Greens	1,451,000
6. Milk	5,328,000	14. Beef Cattle	1,262,000
7. Strawberries	4,637,000	15. Sweet Corn	1,216,000
8. Indoor Plants, Foliage	4,125,000	16. Eggs	1,071,000



SUMMARY

Commodity	1989	1990	1991
Fruit & Nuts	\$10,287,400 *	\$11,287,000	\$12,520,000
Vegetable Crops	26,201,200	18,438,000	23,064,000
Nursery Products	180,478,000	181,040,000	174,591,000
Cut Flowers	1,293,100	1,659,000	2,563,000
Field Crops	7,351,600	8,350,000	7,366,000
Livestock and Poultry	63,268,100	8,946,000 *	6,650,000
Apiary, Livestock, and Poultry Products	26,561,000 *	8,033,400 *	8,903,000 +
Subtotal	\$315,441,000 *	\$237,753,400 *	\$235,657,000
Forest Products	308,700	274,000	210,000
Grand Total	\$315,749,700 *	\$238,027,400 *	\$235,867,000

* Revised figure

+ Does not include wool total

Figures given are gross values. U.S.D.A. payments are not included.



Fruit and Nut Crops

Crop	Year	Acreage	Production		Unit	Per Unit	Value	
			Per Acre	Total			Per Unit	Total
Strawberries	1991	203	29.90	6,070	Ton	\$764	\$4,637,000	
	1990	173	26.13 *	4,520	Ton	\$806	\$3,643,000	
Peaches (Freestone)	1991	705	12.00	8,460	Ton	644	5,448,000	
	1990	815	8.62 *	7,028	Ton	690	4,849,000	
Avocados	1991	250	.94	235	Ton	1,391	327,000	
	1990	295	1.40 *	413 *	Ton	2,421*	1,000,000	
Cherries	1991	140	.80	112	Ton	1,700	190,000	
Miscellaneous	1991	424						1,918,000
	1990	606	Includes citrus, nectarines, and other fruits and nuts.					1,795,000
TOTAL	1991	1,722						\$12,520,000
	1990	1,889						\$11,287,000

* Revised Figure



Vegetable Crops



Crop	Year	Acreage	Production		Unit	Per Unit	Value	
			Per Acre	Total			Per Unit	Total
Dry Onions	1991	1,690	30	50,700	Ton	\$260	\$13,182,000	
	1990	1,550	25	38,800	Ton	\$250	\$9,700,000	
Sweet Corn	1991	360	8.20	2,952	Ton	412	1,216,000	
	1990	415	7.79*	3,233	Ton	408	1,319,000	
Table Greens	1991	405						1,451,000
	1990	383	Includes oriental specialties and leaf lettuce.					1,774,000
Vine crops	1991	133						368,000
	1990	59	Includes squash, watermelons, and other melons.					197,000
Root Vegetables	1991	53	Includes turnips, beets, and carrots.					166,000
	1990	220						798,000
Miscellaneous	1991	342	Includes radishes, parsley, mushrooms, herbs, & sprouts.					6,681,000
	1990	299						4,650,000
TOTAL	1991	2,983						\$23,064,000
	1990	2,926						\$18,438,000

Nursery Products

Item	Year	House Sq. Ft.	Field Acres	Total
Ornamental Trees and Shrubs	1991	4,306,000	1,847	\$113,521,000
	1990	2,487,000	1,760	\$149,053,000
Bedding Plants	1991	284,000	163	22,395,000
	1990	886,000	117	16,585,000
Indoor Plants Foliage	1991	633,000	2.2	4,125,000
	1990	299,000	25.7	6,460,000
Ground Covers	1991	744,000	26.5	3,624,000
	1990	693,000	33.6	4,091,000
Indoor Plants Flowering	1991	345,000	10.0	499,000
	1990	150,000	10.8	1,942,000
Miscellaneous	1991	108,000	995	30,427,000
	1990	84,430	213	2,909,000
Includes vegetables plants, orchids, cacti, and sod				
TOTAL	1991	6,420,000	3,043.7	\$174,591,000
	1990	4,599,430	2,160.0	\$181,040,000

Cut Flowers and Decoratives

Item	Year	House Sq. Ft.	Field Acres	Quantity Sold	Unit	Per Unit	Value Total
Christmas Trees	1991		233	51,995	Tree	\$30.60	\$1,591,000
	1990		140	30,200	Tree	\$31.60	\$ 954,000
Carnations (standard)	1991		6	1,274,500	Bloom	.22	280,000
	1990		6	976,425	Bloom	.23	225,000
Chrysanthemums	1991	167,000	.75				155,000
	1990	167,000*	0*				149,000
Miscellaneous	1991	26,840	90				537,000
	1990	19,800*	87*				331,000
Includes <u>Strelitzia</u> , <u>Gypsophila</u> , and all other cut flowers.							
TOTAL	1991	193,840	329.75				\$2,563,000
	1990	186,800*	233 *				\$1,659,000

* Revised Figure

Field Crops

Crop	Year	Acreage	Production		Unit	Value		
			Per Acre	Total		Per Unit	Total	
Alfalfa Hay	1991	5,768	8.6	49,605	Ton	\$112	\$5,556,000	
	1990	6,211	8.6+	53,400	Ton	\$127	\$6,782,000	
Grain Hay	1991	950	1.8	1,710	Ton	85	145,000	
	1990	900	2.5	2,250	Ton	95	214,000	
Barley	1991	See Miscellaneous						
	1990	486	2.17+	1,055	Ton	100	106,000	
Miscellaneous	1991	1,756*	Includes irrigated pasture and grazing privileges on stubble					710,000
	1990	1,086*					540,000	
Rangeland	1991	381,000					955,000	
	1990	237,700					708,000	
TOTAL	1991	8,474**					\$7,366,000	
	1990	8,683**					\$8,350,000	

* Excluding stubble.

** Excluding rangeland.

+ Revised Figure

Forest Products

Item	Year	Production	Unit	Price	Value
Firewood	1991	498	Cord	\$30.00	\$15,000
	1990	968	Cord	\$30.00	\$29,000
Timber	1991	Miscellaneous Products			195,000
	1990				245,000
TOTAL	1991				\$210,000
	1990				\$274,000

* Figures obtained from State Board of Equalization, Timber Tax System.

Field Crops

Crop	Year	Acreage	Production		Unit	Value		
			Per Acre	Total		Per Unit	Total	
Alfalfa Hay	1991	5,768	8.6	49,605	Ton	\$112	\$5,556,000	
	1990	6,211	8.6+	53,400	Ton	\$127	\$6,782,000	
Grain Hay	1991	950	1.8	1,710	Ton	85	145,000	
	1990	900	2.5	2,250	Ton	95	214,000	
Barley	1991	See Miscellaneous						
	1990	486	2.17+	1,055	Ton	100	106,000	
Miscellaneous	1991	1,756*	Includes irrigated pasture and grazing privileges on stubble					710,000
	1990	1,086*					540,000	
Rangeland	1991	381,000					955,000	
	1990	237,700					708,000	
TOTAL	1991	8,474**					\$7,366,000	
	1990	8,683**					\$8,350,000	

* Excluding stubble.

** Excluding rangeland.

+ Revised Figure

Forest Products

Item	Year	Production	Unit	Price	Value
Firewood	1991	498	Cord	\$30.00	\$15,000
	1990	968	Cord	\$30.00	\$29,000
Timber	1991	Miscellaneous Products			195,000
	1990				245,000
TOTAL	1991				\$210,000
	1990				\$274,000

* Figures obtained from State Board of Equalization, Timber Tax System.

Livestock and Poultry

Species	Year	Production	Total Live Weight	Unit	Value	
					Per Unit	Total
Chickens	1991	1,007,568 *	5,037,840	Lb.	.03+	\$151,000
	1990	1,454,559	7,272,795 *	Lb.	.06 *	\$436,000 *
Dairy Cattle	1991	2,854		Head	1,220	3,482,000
	1990	3,204		Head	1,300	4,165,000
Includes feeder calves & cull cows						
Beef Cattle	1991	2,812	19,684	Cwt.	64.10	1,262,000
	1990	2,960		Head	650.00	1,924,000
Includes calves & heifers						
Hogs	1991	2,855	4,283	Cwt.	57.90	248,000
	1990	5,953	8,930	Cwt.	58.40	522,000
Sheep	1991	5,623	8,435	Cwt.	17.90	151,000
	1990	6,490	9,735	Cwt.	21.00	204,000
Miscellaneous	1991					1,356,000
	1990					1,695,000
Includes ducks, rabbits, and goats						
Total	1991					\$6,650,000
	1990					\$8,946,000 *

* Revised figure + 1991 Preliminary figure, California Agricultural Statistics Service

Apiary, Livestock, and Poultry Products

Item	Year	Production	Unit	Value	
				Per Unit	Total
Honey	1991	3,179,500	Lb.	.50	\$1,590,000
	1990	635,900	Lb.	.55	\$350,000
Pollination	1991	27,000	Hive	33.50	904,000
	1990	18,000	Hive	35.00	630,000
Beeswax	1991	10,000	Lb.	1.00	10,000
	1990	4,000	Lb.	1.10	4,400
Milk	1991	471,069	Cwt.	11.31	5,328,000
	1990	467,288	Cwt.	12.16	5,682,000
Wool	1991	112,872	Lb.	Not Available	Not Available
	1990	122,077	Lb.	.83	101,000
Eggs	1991	1,575,000 *	Doz.	.68	1,071,000 *
	1990	1,890,000	Doz.	.67	1,266,000 +
Total	1991				\$8,903,000 *
	1990				\$8,033,400



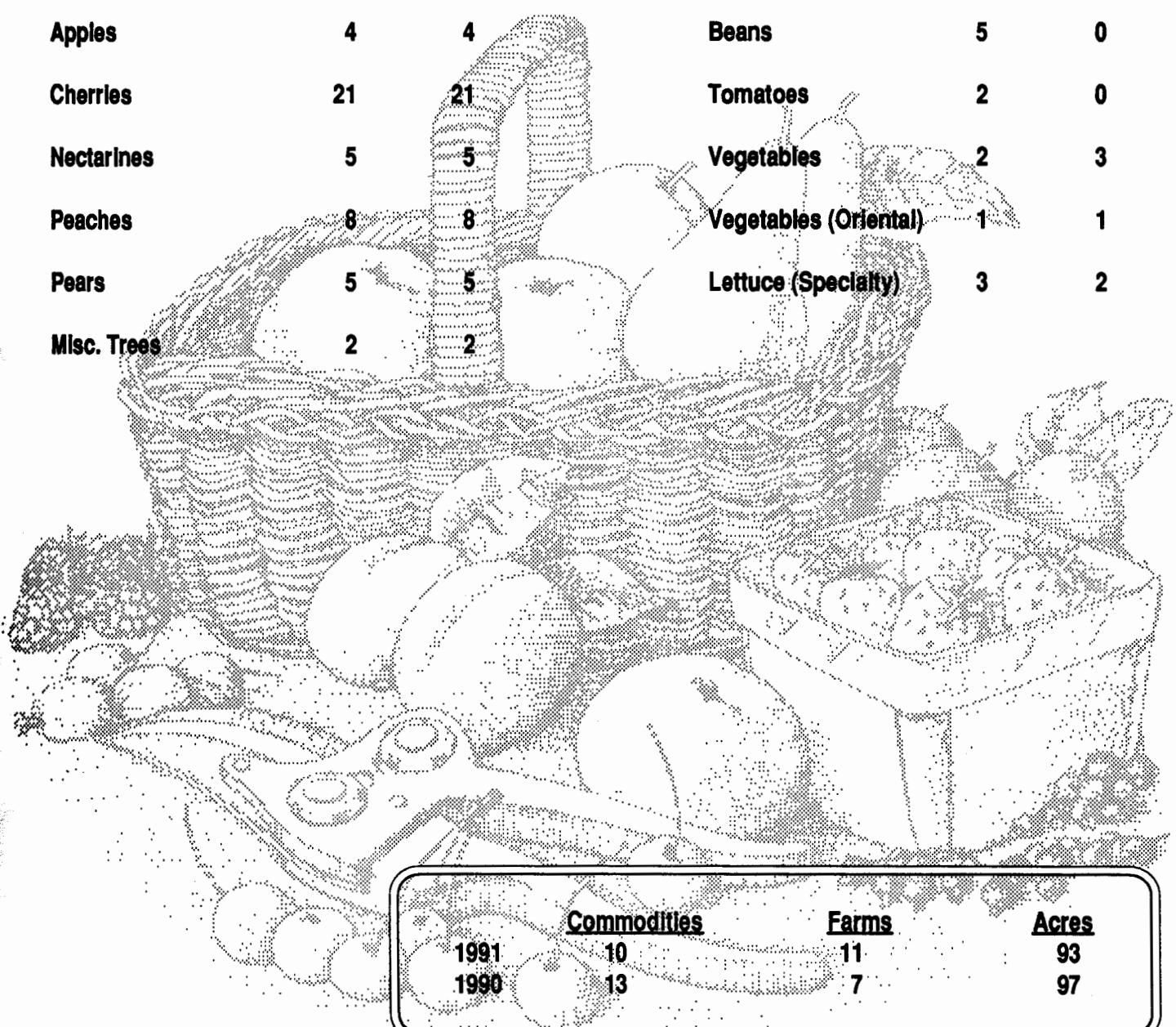
+ Doesn't include wool total * Revised Figure

County of Los Angeles

Sustainable Agriculture Reporting

Organic Farming Statistics 1991

Crop	Estimated Acres		Crop	Estimated Acres	
	1990	1991		1990	1991
Asian pears	5	5	Herbs	34	37
Apples	4	4	Beans	5	0
Cherries	21	21	Tomatoes	2	0
Nectarines	5	5	Vegetables	2	3
Peaches	8	8	Vegetables (Oriental)	1	1
Pears	5	5	Lettuce (Specialty)	3	2
Misc. Trees	2	2			

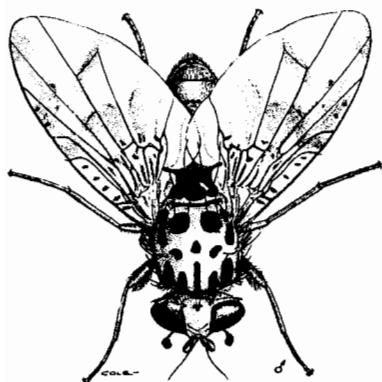


	<u>Commodities</u>	<u>Farms</u>	<u>Acres</u>
1991	10	11	93
1990	13	7	97

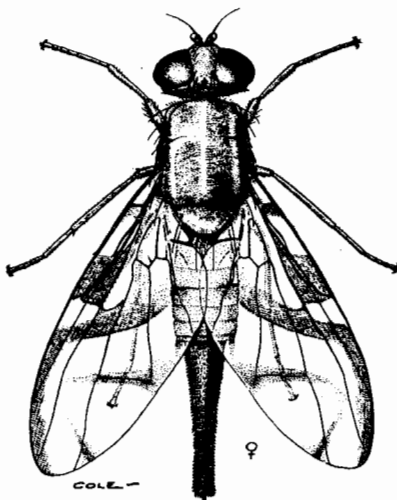
Pest Detection Activities

Pest	Number of Traps		Scope of Programs
	Pest Detection	Pest Eradication	
Mediterranean Fruit Fly	9,223	12,523	26 Detections
Mexican Fruit Fly	4,824	2,253	19 Detections
Oriental Fruit Fly	4,924	221	21 Detections
Melon Fruit Fly	4,730	0	0 Detections
Guava Fruit Fly	4,924	23	1 Detection
Gypsy Moth	3,161	300	1 Detection
Japanese Beetle	2,398	168	5 Detections (Los Angeles International Airport)
European Corn Borer	17	0	0 Detections
European Pine Shoot Moth	32	0	0 Detections
Khapra Beetle	482	0	0 Detections
TOTAL	34,715	15,488	73 Detections

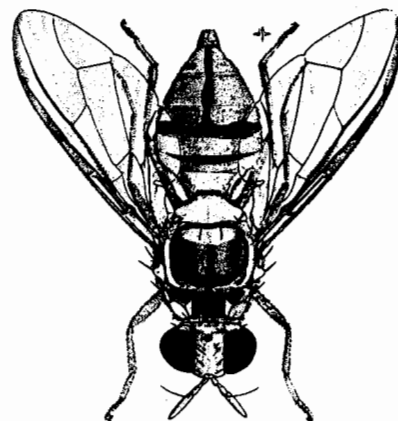
** CDFA places out additional traps.



Mediterranean Fruit Fly



Mexican Fruit Fly



Oriental Fruit Fly

Pest Eradication Activities

Pest	Method	Scope of Program
Mediterranean Fruit Fly	Steriles Released Reg./Soil/Bait Treatments Exclusion - Quarantine	168.5 Million Released 4,046 Properties 46 Sq. Miles/8,210 Lbs. Fruit Seized
Oriental Fruit Fly	Male Annihilation Treatments	4 Treatment Areas
Mexican Fruit Fly	Steriles Released Bait Treatments	25.5 Million Released 3,982 Treatments
Alligatorweed	Foliar Exclusion -Quarantine Herbicide Treatment	59 Sq. Miles 15.5 Acres Treated
Halogeton	Mechanical Control	50 Sq. Ft. Treated

Biological Control Activities

Pest	Agent/Mechanism	Scope of Programs
Ash Whitefly	<u>Encarsia inaron</u> Parasitic wasp (Israeli strain)	155 Parasitoid Release Sites
Mediterranean Fruit Fly	(Steriles)	168.5 Million Sterile Fruit Flies Released
Mexican Fruit Fly	(Steriles)	25.5 Million Sterile Fruit Flies Released

Pest Exclusion Activities

Pest Exclusion Violations Issued	Number of Violations Issued
Citrus Pests	41
Caribbean Fruit Fly	88
Cherry Fruit Fly	4
Sweet Potato Weevil	6
Peach Yellow/Red Suture	4
Nut Tree Pests	1
Ozonium Root Rot	22
European Corn Borer	21
Plum Curculio/Apple, Blueberry Maggot	69
Burrowing Nematode	30
Corn/Sugarcane Borer	3
Walnut/Pecan Pests	12
Cedar Apple Rust	14
European Pine Shoot Moth	2
Peach Rosette Disease	1
Cereal Leaf Beetle	15
West Indian Sugarcane Root Borer	3
Japanese Beetle	17
Hydrilla	1
Soybean Cyst Nematode	19
Citrus Canker	37
Imported Fire Ant	5
Infested/Presume Infested	514
Markings	119
Chestnut Bark/Oak Wilt Disease	4
Failure to Hold Plant Material For Inspection	111
Foreign Fruits and Vegetables	12
Fruits and Vegetables From Hawaii	4
Total	1,179

Pest Exclusion Activities

<u>Pest Intercepted</u>	<u>Material</u>	<u>Source*</u>	<u>Scope of Program Pest Interceptions</u>
Common Name <u>Genus species</u>			
Giant African Snail <u>Achatina fulica</u>	Taro Leaves	LAX	1
Chinese Rose Beetle <u>Adoretus sininus</u>	Basil	LAX	1
Black Whitefly <u>Aleurocathus prob woglumi</u>	Kaffir Lime Leaves	TRUCK	1
Spiraling Whitefly <u>Aleurodicus dispersus</u>	Ti Leaves, Produce Nursery Stock	P.O./FX/LAX/NURS	36
A Whitefly <u>Aleurotrachelus sp.</u>	Ficus	NURS/TRUCK	1
A Leafroller <u>Amorbia sp.</u>	Basil	LAX	1
Oriental Beetle <u>Anomala orientalis</u>	Ti	TRUCK	1
Ant <u>Anoplolepis longipes</u>	Cut Foliage	LAX	3
Coconut Scale <u>Aspidiotus destructor</u>	Cut Flowers	LAX/NURS	8
Oriental Fruit Fly <u>Batrocera dorsalis</u>	Inside Box; Herbs	LAX	1
Snail "B" Rated <u>Bradybaena similaris</u>	Nursery Stock	LAX/NURS	18
Carpenter Ant <u>Camponotus sp.</u>	Nursery Stock	NURS	1
Florida Wax Scale <u>Ceroplastes floridensis</u>	Nursery Stock	NURS	2

Pest Exclusion Activities

<u>Pest Intercepted</u> Common Name <u>Genus species</u>	<u>Material</u>	<u>Source*</u>	<u>Scope of Program</u> Pest <u>Interceptions</u>
Red Wax Scale <u>Ceroplastes rubens</u>	Produce, Cut Flowers Nursery Stock	FX/LAX/NURS	2
Green Garden Looper <u>Chrysodeixis eriosoma</u>	Produce, Nursery Stock	LAX/NURS	15
Leafhopper Larva Cicadellidae Family	Ti	LAX	1
Scale "Q" Rated Coccidae Family	Produce	LAX	1
Green Scale <u>Coccus viridis</u>	Cut Flowers	LAX	2
Slender Soft Scale <u>Coccus acutissimus</u>	Cut Flowers	LAX	5
Longhorned Beetle <u>Curtomerus pilicornis</u>	Basil	LAX	1
Sweet Potato Weevil <u>Cylas formicarius</u>	Sweet Potato	SUPERMARKET	6
Schefflera Whitefly <u>Dialeurodes</u> sp.	Cut Flowers	LAX	1
Male Armored Scale Diaspididae Family	Longan	SUPERMARKET	1
Scarab Beetle Dynastinae Subfamily	Chrysalidocarpus	TRUCK	1
Leafhopper <u>Empoasca</u> sp.	Cut Flowers	LAX	1
Looper Geometridae Family	Mint	LAX	1

Pest Exclusion Activities

<u>Pest Intercepted</u> Common Name Genus species	<u>Material</u>	<u>Source*</u>	<u>Scope of Program</u> Pest Interceptions
Leafhopper Gyponinae Subfamily	Basil	LAX	1
A Snail Helicidae Family	Thyme	LAX	1
Mining Scale <u>Howardia biclavis</u>	Nursery Stock	P.O./FX/NURS	23
Acuminate Scale <u>Kilifia acuminata</u>	Cut Flowers	LAX	1
A Mealybug <u>Maconellicoceus birsutus</u>	Nephelum	SUPERMARKET	1
Micromoths "Q" Rated Microlepidoptera Order	Cut Flowers	LAX	1
A Bug Miridae Family	Basil	LAX	1
Southern Green Stink Bug <u>Nezara viridula</u>	Lalot	LAX	3
Little Fire Ant <u>Ochetomyrmex auropunctata</u>	Nursery Stock	NURS	1
Mirid Bug <u>Orthotylus</u> sp.	Orchid	LAX	2
A Weevil "Q" Rated <u>Oxydema</u> sp.	Nursery Stock	NURS	1
Sansevieria Scale <u>Parlatoria proteus</u>	Cycas	NURS	2
Big Headed Ant <u>Pheidole megacephala</u>	Cut Flowers	P.O./LAX	18

Pest Exclusion Activities

<u>Pest Intercepted</u>	<u>Material</u>	<u>Source*</u>	<u>Scope of Program</u>
Common Name <u>Genus species</u>			Pest <u>Interceptions</u>
Boxwood Scale <u>Pinnaspis buxi</u>	Nursery Stock	LAX/NURS	3
Lesser Snow Scale <u>Pinnaspis strachani</u>	Nursery Stock	P.O./FX/LAX/NURS	17
A Looper Plusiinae Subfamily	Basil	LAX	1
Bug Eggs poss Hemiptera Order	Cut Flowers	LAX	1
A Snail poss <u>Monacha</u> sp.	Rosemary	LAX	1
Leafhopper Eggs poss Cicadellidae Family	Nursery Stock	LAX	2
Magnolia White Scale <u>Pseudaulacaspis cockerelli</u>	Nursery Stock Produce, Cut Flowers	LAX/NURS	151
Elisae Mealybug <u>Pseudococcus elisae</u>	Cut Flowers	LAX/NURS	7
Mealybug "Q" Rated Pseudococcidae Family	Cut Flowers	P.O./LAX/NURS	2
Lycopodium Mealybug <u>Pseudococcus</u> nr. <u>lycopodii</u>	Lycopodium	P.O./FX/LAX	11
Green Shield Scale <u>Pulvinaria psidii</u>	Ginger Leaves Ti Leaves	LAX/NURS	32
A Moth <u>Pyrausta</u> sp.	Basil	LAX	1
Hibiscus Mealybug <u>Rhizoecus hibisci</u>	Rhapis	LAX	1

Pest Exclusion Activities

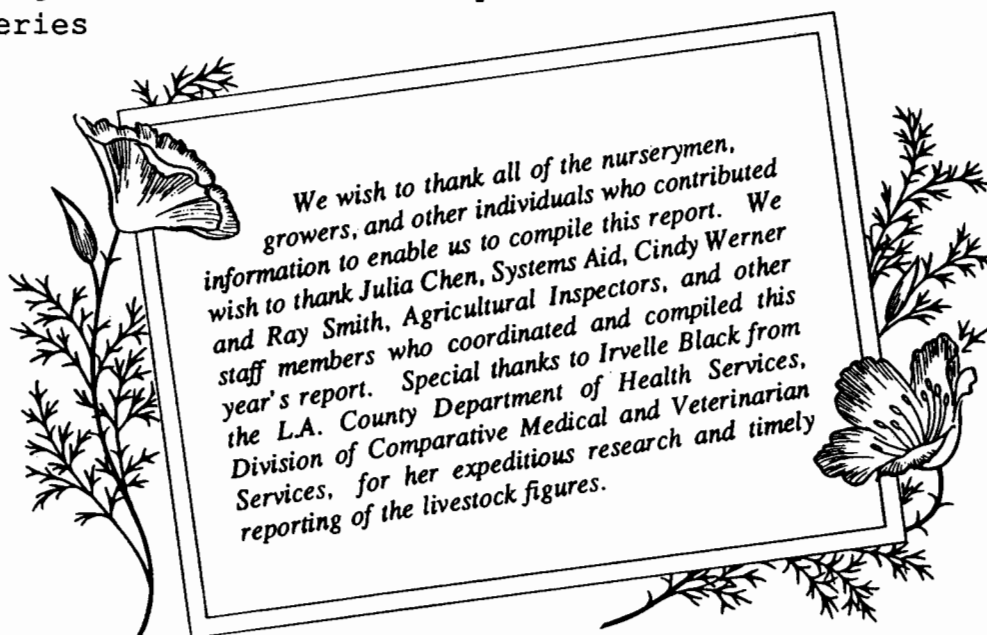
<u>Pest Intercepted</u> Common Name Genus species	<u>Material</u>	<u>Source*</u>	<u>Scope of Program Pest Interceptions</u>
Torpedo Bug <u>Siphanta acuta</u>	Ti Leaves	LAX/NURS	2
Fire Ant <u>Solenopsis</u> sp.	Cut Flowers	LAX	1
Red Imported Fire Ant <u>Solenopsis invicta</u>	Nursery Stock, Hen Eggs, Wooden Pallets	NURS/TRUCK	7
Moth Larva <u>Spodoptera</u> poss. <u>latifascia</u>	Thyme	LAX	1
A Leafhopper <u>Sophonia rubifascia</u>	Nursery Stock, Produce, Cut Flowers	FX/LAX/NURS	20
A Longhorn Beetle <u>Sybra alternans</u>	Produce (Herbs)	LAX	5
An Ant "Q" Rated <u>Tapinoma melanocephalum</u>	Cut Flowers	LAX	2
An Ant "Q" Rated <u>Technomyrex albipes</u>	Cut Flowers, Produce	LAX	5
A Katydid "Q" Rated Tettigonidae Family	Cut Flowers	LAX	2
Thrips (larvae) Thysanoptera Order	Orchid	LAX	1
A Slug <u>Veronicella floridana</u>	Schefflera	TRUCK	1
A Slug "Q" Rated <u>Veronicella leydigi</u>	Produce	LAX/NURS	1
A Slug "Q" Rated <u>Veronicella</u> sp.	Cut Flowers	LAX	11

Pest Exclusion Activities

<u>Pest Intercepted</u> Common Name <u>Genus species</u>	<u>Material</u>	<u>Source*</u>	<u>Scope of Program</u> Pest <u>Interceptions</u>
Bark Beetle <u>Xyleborus</u> sp.	Cut Flowers	LAX	1
A Moth Yponomeutoidea Superfamily	Monstera	LAX	1
A Snail "Q" Rated <u>Zachrysia provisoria</u>	Nursery Stock	LAX/NURS	8
Unknown Eggs (insect)	Cut Flowers	LAX	1
Quack Grass <u>Agropyron repens</u>	Lawn Seed	NURS	1
Purple Mustard <u>Chorispora tenella</u>	Grass Seed	NURS	2

Total **472**

* Source: P.O. - Post Office, FX = Federal Express
LAX - Los Angeles International Airport
MURS - Nurseries



***Los Angeles County Agricultural Commissioner/
Weights & Measures Department
3400 La Madera Avenue
El Monte, California 91732***

