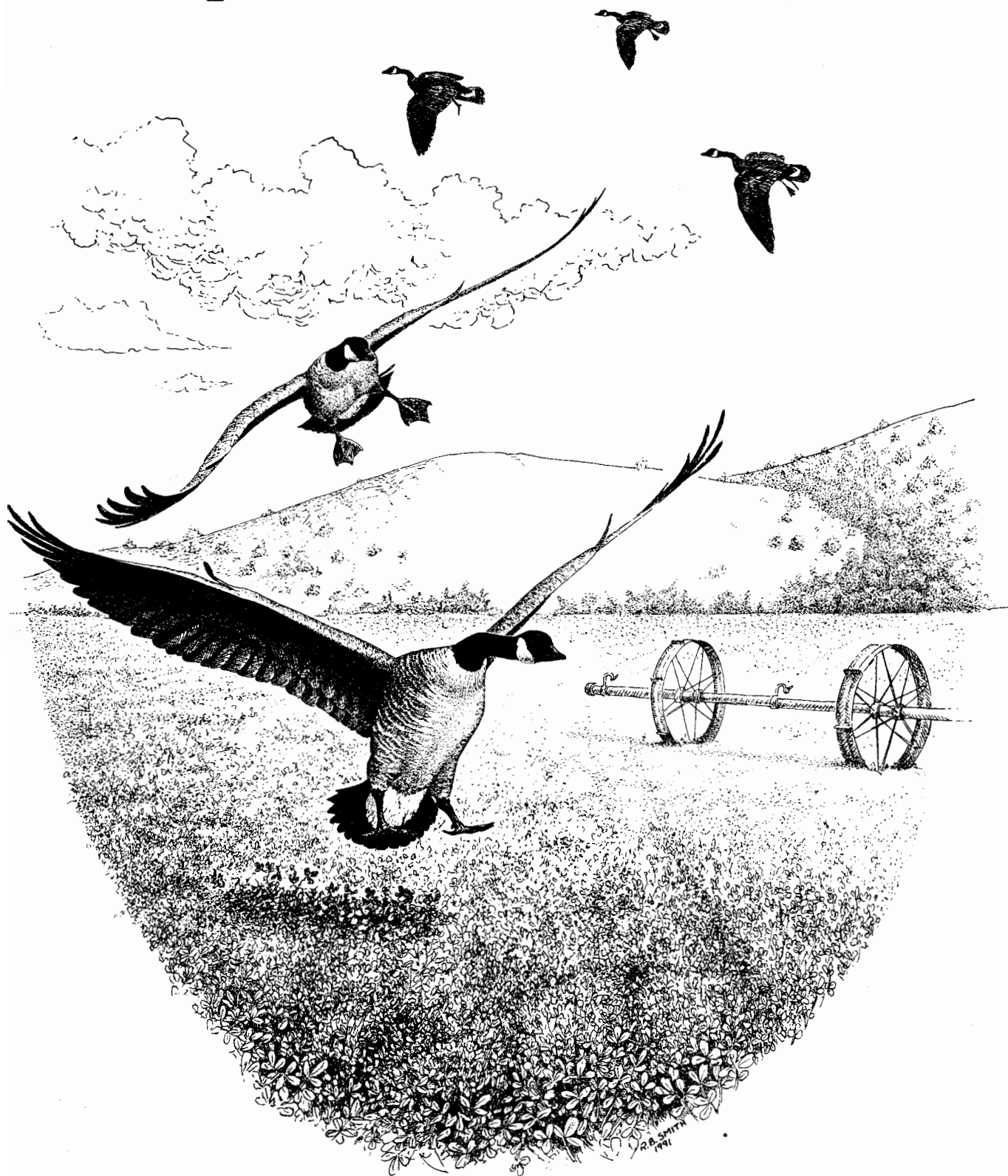


1990 Crop and Livestock Report



County of Los Angeles
Agricultural Commissioner/Weights & Measures Department



COUNTY OF LOS ANGELES

Department of
Agricultural Commissioner
and Weights and Measures

3400 La Madera Avenue
El Monte, California 91732

William A. Edwards
Chief Deputy

E. Leon Spaugy
Agricultural Commissioner/
Director of Weights and Measures

1990 CROP AND LIVESTOCK REPORT

Agriculture in Los Angeles County remained constant with slight to moderate gains in most areas. The combined gross value of Fruit, Nut, Field, Vegetable, and Nursery Crops were up by 2%, although total agricultural value declined 6.5%. A significant factor resulting in the drop was a decline in the production and price of poultry.

Strong strawberry prices along with increased production resulted in a 32% rebound for this crop despite a reduction in acreage. Avocados joined the one million dollar crop category as a result of increases in production acreage.

Gross value increased for Fruits and Nuts by 12%, for Field Crops by 14%, for Nursery Products by 3%, for Cut Flowers by 3%, and for Apiary, Livestock and Poultry Products by 60%.

Vegetable Crop gross value decreased by 30%. Lower dry onion prices, along with the loss of a large table greens grower, were major contributors in this decline.

Christmas tree production rebounded with increased acreage, production, and higher prices resulting in a total gross value of \$954,000, an increase of 62%.

The new Sustainable Agriculture Section indicates the continued hazard of exotic pests. High levels of interception reflect Los Angeles County's energetic exclusion program.

Crop production in Los Angeles County remains healthy and on an even keel in most areas. Livestock and Poultry production decreased in 1990 as a result of increased pressure from urbanization and a reduction in ranchers.

E. Leon Spaugy
Agricultural Commissioner/
Director of Weights and Measures

Patrick Ryan, F.V.M., M.P.H.
Department of Health Services

*'It is a comfortable feeling to know that
you stand on your own ground. Land is
about the only thing that can't fly away.'*

Anthony Trollope 1815-1882

Cover design by Ray Smith





MILLION DOLLAR CROPS

1. Ornamental Trees and Shrubs	\$149,053,000	10. Dairy Cattle	4,165,000
2. Eggs	28,174,000	11. Ground Covers	4,091,000
3. Bedding Plants	16,585,000	12. Strawberries	3,643,000
4. Chickens	9,775,000	13. Indoor Flowering Plants	1,942,000
5. Dry Onions	9,700,000	14. Beef Cattle	1,924,000
6. Alfalfa Hay	6,782,000	15. Table Greens	1,774,000
7. Indoor Foliage Plant	6,460,000	16. Sweet Corn	1,319,000
8. Milk	5,682,000	17. Avocados	1,000,000
9. Peaches	4,849,000		

SUMMARY



<u>Commodity</u>	<u>1988</u>	<u>1989</u>	<u>1990</u>
Fruit and Nuts	\$10,620,500	\$10,100,800	\$11,287,000
Vegetable Crops	26,007,600	26,201,200	18,438,000
Nursery Products	167,289,000	180,478,000	181,040,000
Cut Flowers	2,970,900	1,293,100	1,659,000
Field Crops	9,133,500	7,351,600	8,350,000
Livestock and Poultry	60,789,500	63,268,100	18,285,000
Apiary, Livestock, and Poultry Products	<u>18,734,200</u>	<u>24,559,500</u>	<u>34,941,400</u>
Subtotal	\$295,545,200 *	\$313,252,300 *	274,000,400*
Forest Products	<u>27,000</u>	<u>308,700**</u>	<u>274,000</u>
Grand Total	\$295,572,200	\$313,561,000**	\$274,274,400

* Figures given are gross values. U.S.D.A. payments are not included.

** Revised figure

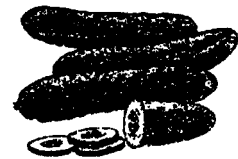


Fruit and Nut Crops

Crop	Year	Acreage	Production		Unit	Per Unit	Value		
			Per Acre	Total			Per Unit	Total	
Strawberries	1990	173	19.4	4,520	Ton	\$806	\$3,643,000		
	1989	216	17.4	3,758	Ton	\$736	\$2,765,900		
Peaches (Freestone)	1990	815 *	8.5	7,028	Ton	690	4,849,000		
	1989	800 *	9.0	7,200	Ton	780	5,616,000		
Avocados	1990	295	1.00	410	Ton	2,440	1,000,000		
	1989	90	0.50	45	Ton	2,031	91,400		
Misc.	1990	606	Includes pears, lemons, figs,					1,795,000	
	1989	512	and other fruits and nuts.					1,627,500	
TOTAL	1990	1,889 **					\$11,287,000		
	1989	1,618 **					\$10,100,800		

* Bearing acreage only.

** Includes non bearing peach acreage.



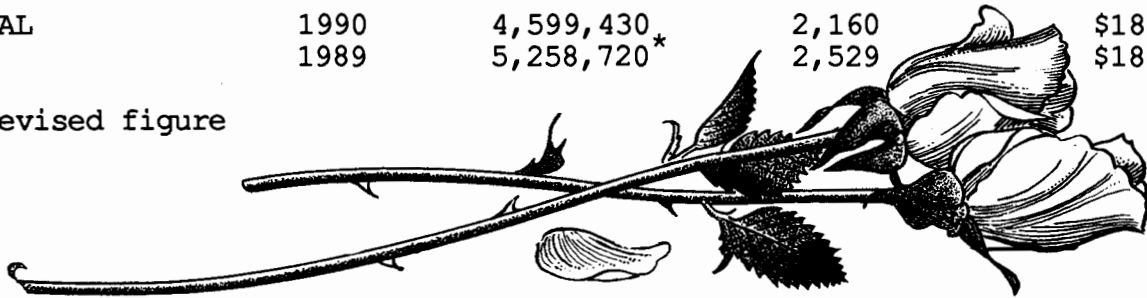
Vegetable Crops

Crop	Year	Acreage	Production		Unit	Per Unit	Value		
			Per Acre	Total			Per Unit	Total	
Dry Onions	1990	1,550	25	38,800	Ton	\$250.00	\$ 9,700,000		
	1989	1,675	27.0	45,225	Ton	\$280.00	\$12,663,000		
Table Greens	1990	383	Includes oriental specialties					1,774,000	
	1989	720	and leaf lettuce.					2,591,500	
Sweet Corn	1990	415	9.5	3,233	Ton	408	1,319,000		
	1989	290	5.75	1,668	Ton	433	722,200		
Vine Crops	1990	59	Includes squash, watermelons,					197,000	
	1989	53	and other melons.					126,900	
Root Vegetable	1990	220	Includes turnips, beets, and					798,000	
	1989	171	carrots					454,300	
Miscellaneous	1990	299	Includes radishes, parsley,					4,650,000	
	1989	645	mushrooms, herbs, and sprouts					5,711,200	
TOTAL	1990	2,926					\$18,438,000		
	1989	3,554					\$26,201,200		

Nursery Products

Item	Year	House Sq. Ft.	Field Acres	Total
Ornamental Trees and Shrubs	1990	2,487,000	1,760	\$149,053,000
	1989	2,415,700*	2,024	\$148,800,000
Bedding Plants	1990	886,000	117	16,585,000
	1989	1,008,000	113	19,100,000
Indoor Plants, Foliage	1990	299,000	25.7	6,460,000
	1989	570,000	40	2,515,000
Ground Covers	1990	693,000	33.6	4,091,000
	1989	899,150	68	4,495,000
Indoor Plants Flowering	1990	150,000	10.8	1,942,000
	1989	234,000	21	1,705,000
Miscellaneous	1990	84,430	213	2,909,000
	1989	131,870	263	3,863,000
Includes vegetable plants, orchids, cacti, and sod.				
TOTAL	1990	4,599,430	2,160	\$181,040,000
	1989	5,258,720*	2,529	\$180,478,000

* Revised figure



Cut Flowers and Decoratives

Item	Year	House Sq. Ft.	Field Acres	Quantity Sold	Unit Per Unit	Total
Christmas Trees	1990		140	30,200	Tree \$31.60	\$954,000
	1989		77	19,500	Tree \$30.25	\$589,900
Carnations (standard)	1990		6	976,425	Bloom .23	225,000
	1989	180,000	6	2,386,250	Bloom .18	429,500
Chrysanthemums	1990	12,000	2.8			149,000
	1989	0	3.5			2,200
Miscellaneous	1990	53,500	86	Includes <u>Strelitzia</u> ,		331,000
	1989	0	79.5	<u>Gypsophila</u> , and all other cut flowers.		271,500
TOTAL	1990	65,500	235			\$1,659,000
	1989	180,000	166			\$1,293,100

Field Crops

Crop	Year	Acreage	Production		Unit	Value	
			Per Acre	Total		Per Unit	Total
Alfalfa Hay	1990	6,211	8.00	53,400	Ton	\$127	\$6,782,000
	1989	6,300	8.00	50,400	Ton	\$125	\$6,300,000
Rangeland	1990	237,700					708,000
	1989	240,000					620,000
Barley	1990	486	2.00	1055	Ton	100	106,000
	1989	250	.25	63	Ton	50	3,100
Grain Hay	1990	900	2.50	2,250	Ton	95	214,000
	1989	1,100	2.50	2,750	Ton	90	247,500
Miscellaneous	1990	1,086 *	Includes irrigated pasture and				540,000
	1989	450 *	grazing privileges on stubble.				181,000
TOTAL	1990	8,683 **					\$8,350,000
	1989	8,100 **					\$7,351,600

* Excluding stubble.

** Excluding rangeland.



Forest Products

Item	Year	Production	Unit	Price	Value
Firewood	1990	968	Cord	\$30.00	\$29,000
	1989	2,000	Cord	\$15.00	\$30,000
Timber	1990	245,200	Board ft.	\$1.00	\$245,000
	1989	278,700 **	Board ft.	\$1.00	\$278,700
TOTAL	1990				\$274,000
	1989				\$308,700

* Figures obtained from Franchise Tax Board, represent harvested timber for lumber.

** Revised figure



Livestock and Poultry

Species	Year	Production	Total Live		Per Unit	Value	
			Weight	Unit		Total	
Chickens	1990	13,576,356	81,458,136	Lb.	\$.12	\$ 9,775,000	
	1989	22,904,146	118,061,559	Lb.	\$.35	\$41,321,500	
Horses	1990	Category discontinued					
	1989	29,853		Head	400		11,941,200
Dairy Cattle	1990	3,204			1300		4,165,000
	1989	4,210	42,100	Cwt.	120		5,052,000
		Includes feeder calves and cull cows.					
Beef Cattle	1990	2,960		Head	650.00		1,924,000
	1989	3,699		Head	532.00		1,967,868
		Includes calves and heifers.					
Hogs	1990	5,953	8,930	Cwt.	58.40		522,000
	1989	9,157	13,736	Cwt.	46.30		636,000
Sheep	1990	6,490	9,735	Cwt.	21.00		204,000
	1989	18,993	28,486	Cwt.	22.50		640,935
Miscellaneous	1990	Includes ducks, rabbits, and					1,695,000
	1989	goats.					1,745,600
TOTAL	1990						\$18,285,000
	1989						\$63,268,100



Apiary, Livestock, and Poultry Products

Item	Year	Production	Unit	Per Unit	Total	
Eggs	1990	42,051,129	Doz.	\$.67	\$28,174,000	
	1989	27,424,000	Doz.	\$.66	\$18,099,800	
Milk	1990	467,288	Cwt.	12.16	5,682,000	
	1989	605,300	Cwt.	12.39	7,500,000	
Pollination	1990	18,000	Hive	35.00	630,000	
	1989	20,063		26.00	521,600	
Honey	1990	635,900		.55	350,000	
	1989	401,320		.61	244,800	
Wool	1990	122,077		.83	101,000	
	1989	138,373		1.38	191,000	
Beeswax	1990	4,000	Lb.	1.10	4,400	
	1989	4,000	Lb.	1.10	4,400	
TOTAL	1990					\$34,941,400
	1989					\$26,561,600

County of Los Angeles Sustainable Agriculture Reporting

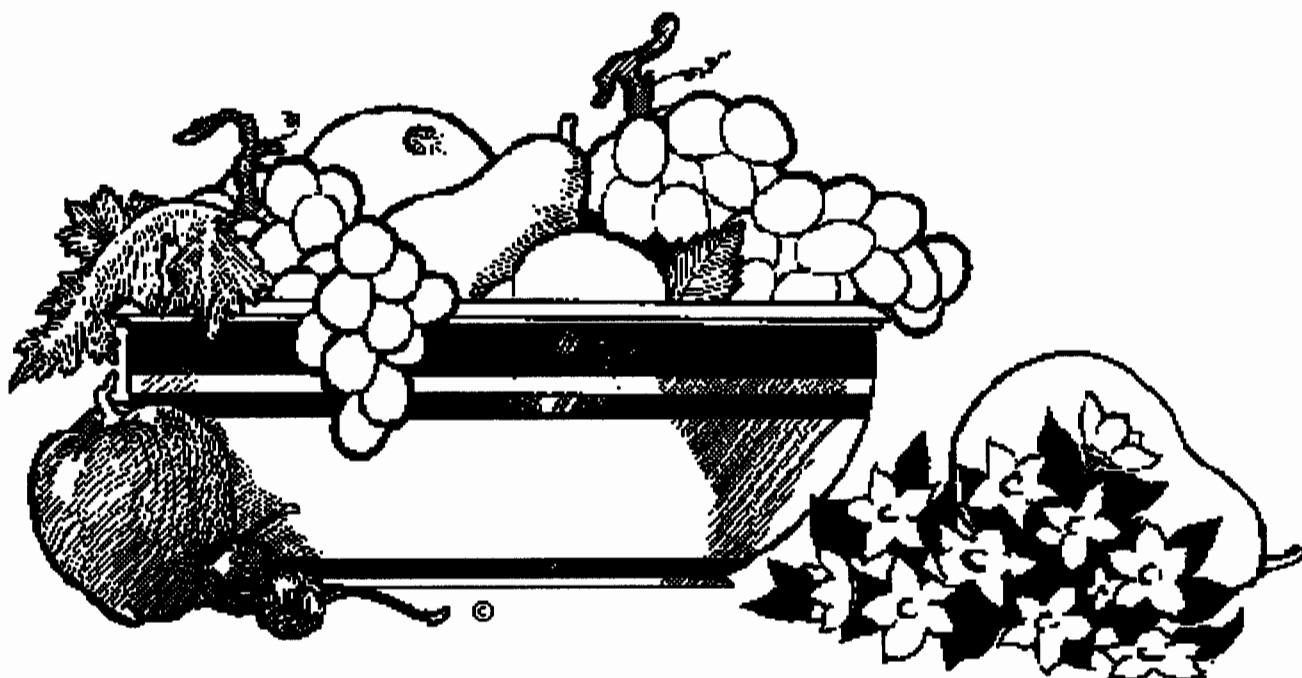
Organic Farming Statistics 1990

<u>Crop</u>	<u>Estimated Acres</u>	<u>Crop</u>	<u>Estimated Acres</u>
Asian pears	5	Herbs	34
Apples	4	Beans	5
Cherries	21	Tomatoes	2
Nectarines	5	Vegetables	2
Peaches	8	Vegetables (Oriental)	1
Pears	5	Lettuce (Specialty)	3

13 Commodities

7 Farms

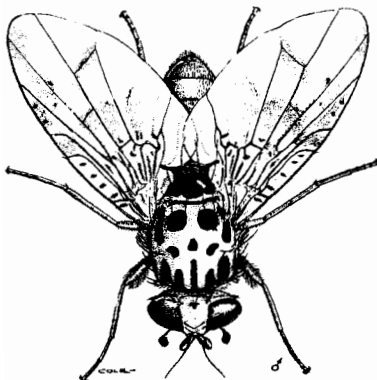
97 Acres



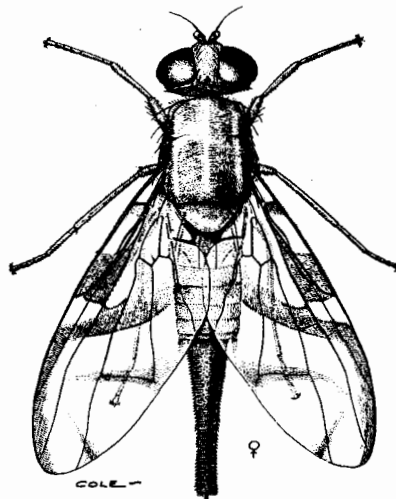
Pest Detection Activities

<u>Pest</u>	<u>Number of Pest Detection/Eradication Traps</u>	<u>Scope of Program</u>
Mediterranean Fruit Fly	200**/17,700	26 Detections
Mexican Fruit Fly	4,528/1,797	8 Detections
Oriental Fruit Fly	4,739/975	18 Detections
Melon Fruit Fly	2,211/653	1 Detection
Peach Fruit Fly	4,739/55	1 Detection
Gypsy Moth	3,071/400	3 Detections
Japanese Beetle	2,309/0	1 Detections 13 Detections (Los Angeles International Airport)
European Corn Borer	17/0	0
European Pine Shoot Moth	33/0	0
Khapra Beetle	556/0	0
TOTAL	17,664 Traps/21,580 Traps	71 Detections

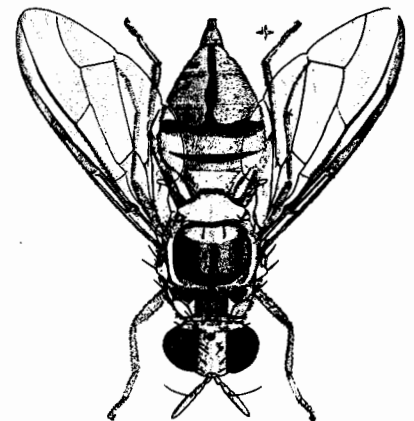
** CDFA placed out additional traps.



Mediterranean Fruit Fly



Mexican Fruit Fly



Oriental Fruit Fly

Pest Eradication Activities

<u>Pest</u>	<u>Method</u>	<u>Scope of Program</u>
Mediterranean Fruit Fly	Aerial Treatments Steriles Released Fruit Removal Reg./Soil/Bait Treatments Exclusion	105 Treatments/536 sq miles 5.25 Billion Released --- 3,008 Properties 954 sq miles/746,982 lbs Fruit Seized
Oriental Fruit Fly	Male Annihilation Treatments	24 Treatments
Melon Fruit Fly	None	-
Gypsy Moth	None	-
Peach Fruit Fly (Dacus zonatus)	None	-
Mexican Fruit Fly	Aerial Treatments Steriles Released Ground Bait Treatments	7 Treatments 338 Million Released 188 Treatments
Alligatorweed	Herbicide Treatment	23.52 Acres Treated
Halogeton	Mechanical Control	150 sq. ft. Treated

Biological Control Activities

<u>Pest</u>	<u>Agent/Mechanism</u>	<u>Scope of Program</u>
Ash White Fly	<u>Encarsia inaron</u> Parasitic wasp (Israeli strain)	22 Parasitoid Release Sites
Mediterranean Fruit Fly	(Steriles)	5.25 Billion Sterile Fruit Flies Released
Mexican Fruit Fly	(Steriles)	338 Million Sterile Fruit Flies Released

Pest Exclusion Activities

<u>Pest Exclusion Violations Issued</u>	<u>Number of Violations Issued</u>
Citrus Pests	45
Caribbean Fruit Fly	62
Cherry Fruit Fly	2
Sweet Potato Weevil	4
Peach Yellow/Red Suture	11
Nut Tree Pests	10
Ozonium Root Rot	14
European Corn Borer	5
Persimmon Root Borer	5
Plum Curculio/Apple, Blueberry Maggot	30
Burrowing Nematode	34
Corn/Sugarcane Borer	2
Walnut/Pecan Pests	10
Cedar Apple Rust	3
European Pine Shoot Moth	64
Peach Rosette Disease	2
Cereal Leaf Beetle	5
West Indian Sugarcane Root Borer	2
Japanese Beetle	9
Hydrilla	2
Soybean Cyst Nematode	6
Live Insect/No Permit	1
Gypsy Moth	1
Citrus Canker	7

Pest Exclusion Activities

<u>Pest Exclusion Violations Issued</u>	<u>Number of Violations Issued</u>
Imported Fire Ant	6
Infested/Presume Infested	533
Markings	149
Chestnut Bark/Oak Wilt Disease	2
Unauthorized Movement of Quarantine Hold	1
Failure to Hold Plant Material For Inspection	27
Foreign Fruits and Vegetables	2
Fruits and Vegetables From Hawaii	10
Tephritid Fruit Fly	2
Mediterranean Fruit Fly	3

Total	1,072



Pest Exclusion Activities

<u>Pest Intercepted</u> Common Name <u>Genus species</u>	<u>Material</u>	<u>Source</u> [*]	<u>Scope of Program</u> Pest <u>Interceptions</u>
Spiraling Whitefly <u>Aleurodicus dispersus</u>	Ti Leaves, Produce Nursery Stock	P.O./FX/LAX/NURS	85
Coconut Scale <u>Aspidiotus destructor</u>	Cut Flowers	LAX/NURS	5
Red Wax Scale <u>Ceroplastes rubens</u>	Produce, Cut Flowers Nursery Stock	FX/LAX/NURS	8
Florida Wax Scale <u>Ceroplastes floridensis</u>	Nursery Stock	NURS	2
Green Garden Looper <u>Chrysodeixis eriosoma</u>	Produce, Nursery Stock	LAX/NURS	4
Green Scale <u>Coccus viridis</u>	Cut Flowers	LAX	5
Slender Soft Scale <u>Coccus acutissimus</u>	Cut Flowers	LAX	1
Beetle Roach <u>Diploptera dytiscoides</u>	Cut Flowers	LAX	1
Leafhopper <u>Empoasca sp.</u>	Cut Flowers	LAX	1
Quack Grass <u>Agropyron repens</u>	Lawn Seed	NURS	1
Oriental Scale <u>Aonidiella orientalis</u>	Nursery Stock	NURS	2
Snail "B" Rated <u>Bradybaena similaris</u>	Nursery Stock	LAX/NURS	7
Soil Mealybug <u>Geococcus coffeae</u>	Nursery Stock	NURS	1
Mining Scale <u>Howardia biclavis</u>	Nursery Stock	P.O./FX/NURS	9
Acuminate Scale <u>Kilifia acuminata</u>	Cut Flowers	LAX	2

Pest Exclusion Activities

<u>Pest Intercepted</u> Common Name <u>Genus species</u>	<u>Material</u>	<u>Source</u> *	<u>Scope of Program</u> Pest <u>Interceptions</u>
Carpenter Ant <u>Camponotus abdominalis floridanus</u>	Nursery Stock	NURS	1
An Ant "Q" Rated <u>Brachymermymx sp.</u>	Nursery Stock	NURS	1
Little Fire Ant <u>Ochetomyrmex auropunctata</u>	Nursery Stock	NURS	1
Tropical Palm Scale <u>Hemiberlesia palmae</u>	Nursery Stock	NURS	1
An Armyworm <u>Spodoptera sp.</u>	Live Plants	LAX	1
Canada Thistle <u>Cirsium arvense</u>	Seed	NURS	1
A Slug "Q" Rated <u>Philomycus sp.</u>	Nursery Stock	NURS	2
Barnacle Scale <u>Ceroplastes cirripidiformis</u>	Cut Flowers	LAX	1
Purple Mustard <u>Chorispora tenella</u>	Grass Seed	NURS	2
A Lygaeid Bug <u>Ischnodemus sp.</u>	Cut Flowers	LAX	1
Black Thread Scale <u>Ischnaspis longirostris</u>	Cut Flowers	LAX	1
Serrated Tussock <u>Nassella trichotoma</u>	Seed	TRUCK	1
A Slug "Q" Rated <u>Veronicella sp.</u>	Cut Flowers	LAX	3
A Snail "Q" Rated <u>Subulina octona</u>	Nursery Stock	NURS	2
A Scale "Q" Rated <u>Opuntiaspis carinata</u>	Nursery Stock	NURS	1

Pest Exclusion Activities

<u>Pest Intercepted</u> Common Name <u>Genus species</u>	<u>Material</u>	<u>Source</u> *	<u>Scope of Program</u> Pest <u>Interceptions</u>
A Snail "Q" Rated <u>Opeas sp.</u>	Cut Flowers	LAX	1
Orchid Weevil <u>Orchidophilus sp.</u>	Cut Flowers	LAX	1
Big Headed Ant <u>Pheidole megacephala</u>	Cut Flowers	P.O./LAX	9
Sansevieria Scale <u>Parlatoria proteus</u>	Nursery Stock	NURS	2
Boxwood Scale <u>Pinnaspis buxi</u>	Nursery Stock	LAX/NURS	12
Lesser Snow Scale <u>Pinnaspis strachani</u>	Nursery Stock	P.O./FX/LAX/NURS	91
Lycopodium Mealybug <u>Pseudococcus nr. lycopodii</u>	Lycopodium	P.O./FX/LAX	17
Green Shield Scale <u>Pulvinaria psidii</u>	Ginger leaf, Ti Leaf	LAX/NURS	52
Elisae mealybug <u>Pseudococcus elisae</u>	Cut Flowers	LAX/NURS	2
Magnolia White Scale <u>Pseudaulacaspis cockerelli</u>	Nursery Stock Produce, Cut Flowers	LAX/NURS	217
Palm Scale <u>Palmicultor palmarum</u>	Cut Flowers	LAX/NURS	2
Torpedo Bug <u>Siphanta acuta</u>	Ti leaves	LAX/NURS	2
Red Imported Fire Ant <u>Solenopsis invicta</u>	Nursery Stock	NURS/TRUCK	7
An Ant "Q" Rated <u>Technomyrex albipes</u>	Cut Flowers, Produce	LAX	5
Papaya Fruit Fly <u>Toxotrypana curvicauda</u>	Produce	MARKET	1

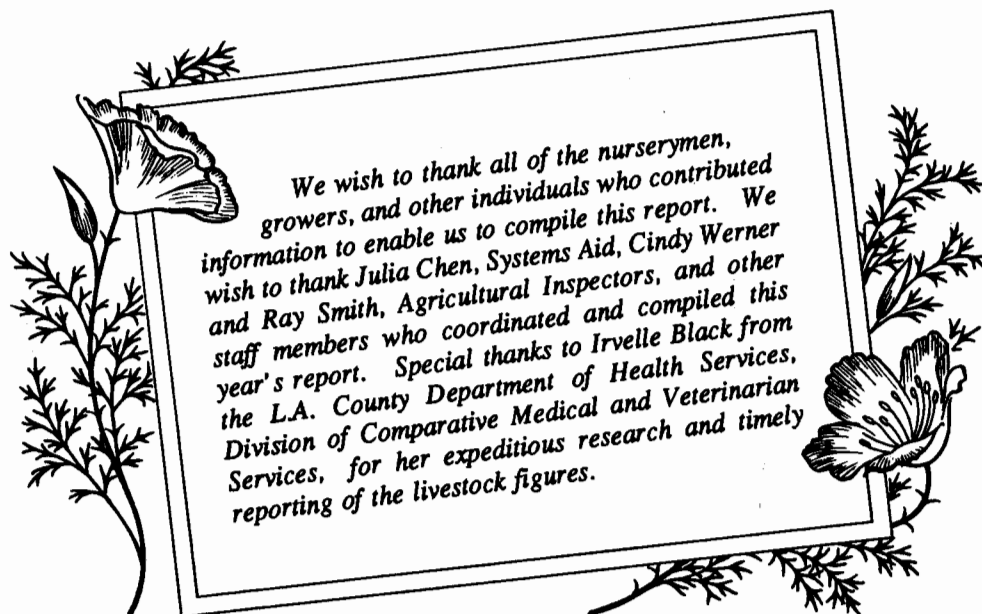
Pest Exclusion Activities

<u>Pest Intercepted</u> Common Name <u>Genus species</u>	<u>Material</u>	<u>Source</u> *	<u>Scope of Program</u> Pest <u>Interceptions</u>
An Ant "Q" Rated <u>Tapinoma melanocephalum</u>	Cut Flowers	LAX	2
A Slug "Q" Rated <u>Veronicella leydigi</u>	Produce	LAX/NURS	3
A Leafhopper <u>Sophonia rubifasciata</u>	Cut Flowers, Produce, Nurs Stock	FX/LAX/NURS	5
A Scale "Q" Rated <u>Philephedra tuberculosa</u>	Nursery Stock	NURS	1
Bag Worm <u>Thyridopteryx ephemeraeformis</u>	Nursery Stock	NURS	1
Burrowing Nematode <u>Radopholus similis</u>	Nursery Stock	NURS	1
A Snail "Q" Rated <u>Zachrysia provisorica</u>	Nursery Stock	LAX/NURS	7
A Longhorn Beetle <u>Sybra alternans</u>	Produce (Herbs)	LAX	1
Croton Whitefly <u>Orchamoplatus mammaeferus</u>	Cut Flowers	LAX	1
A Beetle "Q" Rated <u>Anomala sp.</u>	Nursery Stock	HOMEOWNER	1
A Weevil "Q" Rated <u>Oxydema sp.</u>	Nursery Stock	NURS	1
Coccidae Family "Q" Rated Scale	Produce	LAX	1
Fulgoridae Family "Q" Rated Torpedo Bug	Cut Flowers	LAX	1
Muscidae Family "Q" Rated Fly	Nursery Stock	NURS	1
Microlepidoptera "Q" Rated Micromoths	Cut Flowers	LAX	1

Pest Exclusion Activities

<u>Pest Intercepted</u> Common Name <u>Genus species</u>	<u>Material</u>	<u>Source</u> *	<u>Scope of Program</u> Pest <u>Interceptions</u>
Nirvaninae Subfamily A Leafhopper	Ti Leaves	LAX	1
Typhlocybinae Subfamily A Leafhopper Nymph	Produce	LAX	1
Pseudococcidae Family "Q" Rated Mealybug	Cut Flowers	P.O./LAX/NURS	4
Tortricidae Family "Q" Rated Moth Larva	Produce	LAX	1
Tettigonidae Family "Q" Rated Katydid Eggs	Cut Flowers	LAX	1
Typhlobycinae Family "Q" Rated leafhopper	Cut Flowers	P.O./LAX	2
Noctuidae Family "Q" Rated Moth	Cut Flowers	LAX	1
Unknown Eggs (insect)	Cut Flowers	LAX	1
Total			----- 615

*Source: P.O. = Post Office, FX = Federal Express
 LAX = Los Angeles International Airport
 NURS = Nurseries



***Los Angeles County Agricultural Commissioner/
Weights & Measures Department
3400 La Madera Avenue
El Monte, California 91732***

