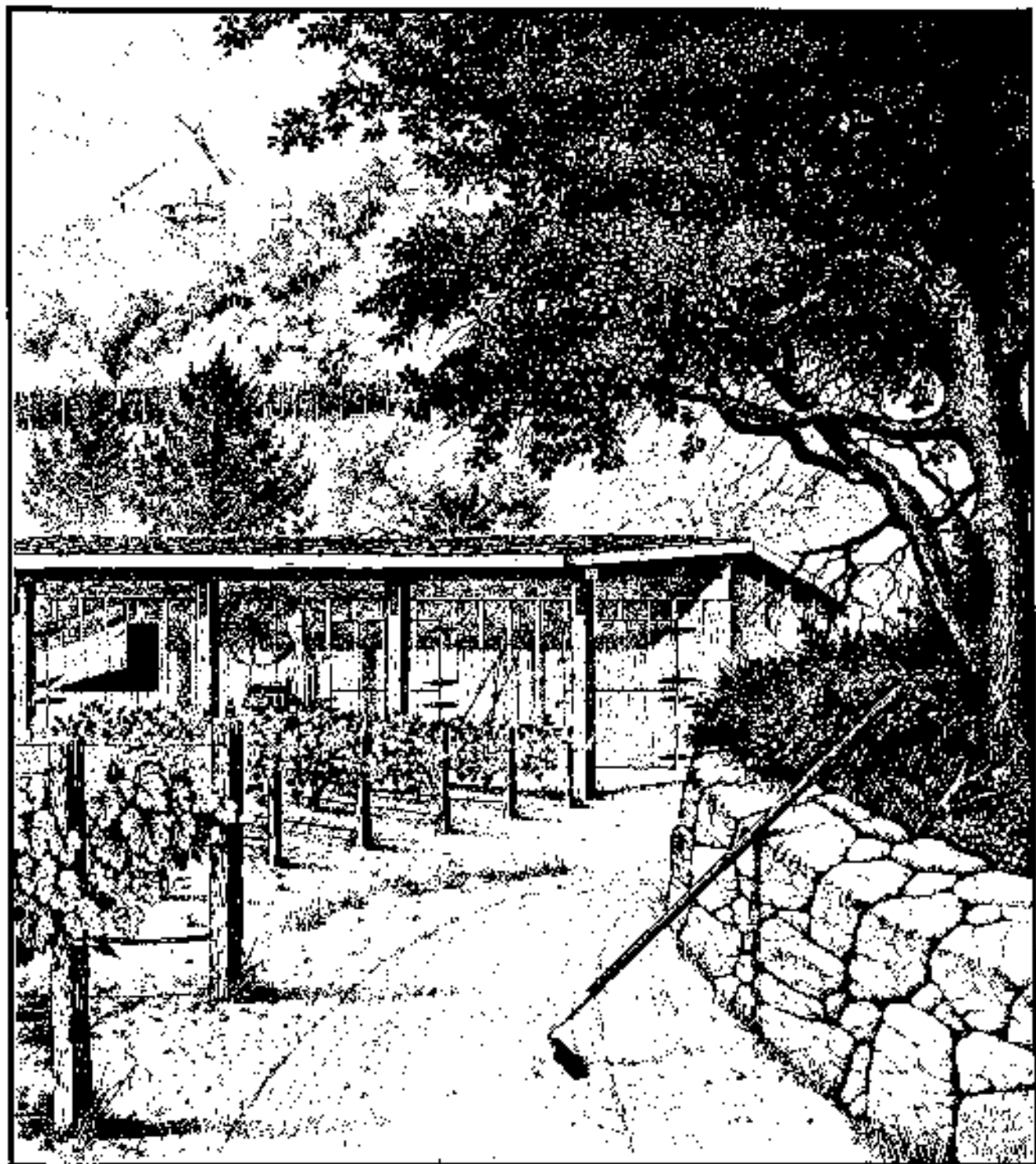


LOS ANGELES COUNTY

AGRICULTURAL COMMISSIONER/
WEIGHTS AND MEASURES DEPARTMENT



1995 CROP REPORT



E. Leon Spaugy
Agricultural Commissioner/
Director of Weights and Measures

COUNTY OF LOS ANGELES

*Department of
Agricultural Commissioner
and Weights and Measures*

3400 La Madera Avenue
El Monte, California 91732

Cato R. Fiksdal
Chief Deputy

1995 Crop Report

Ann M. Veneman, Secretary
California Department of Food and Agriculture

and

The Honorable Board of Supervisors
County of Los Angeles

In accordance with the provisions of Section 2272 of the California Food and Agricultural Code, it is with pleasure that I submit the 1995 Crop Report on the acreage, yield, and gross value of agricultural commodities produced in Los Angeles County.

The overall gross value of agricultural crops and products for 1995 was **\$209,850,749**, a 2.89% decrease from the 1994 total of \$216,114,112.

Nursery Products continues as the leading gross value commodity category with an increase of 1.95%. Increases also occurred in Vegetable Crops (29.27%), Field Crops (3.09%), Cut Flowers/Decoratives (16.98%), and Forest Products (0.24%). The large increase in Vegetable Crops from \$18,836,680 in 1994 to \$24,351,803 can be attributed to increased production of root vegetable acreage, such as carrots.

Fruit and Nut Crops decreased 11.62% in 1995 due to frost damage on peaches, nectarines, cherries and apricots. Production results for livestock and poultry, which amounted to more than \$13 million in 1994, are not included in this year's report due to the lack of availability.

Respectfully submitted,

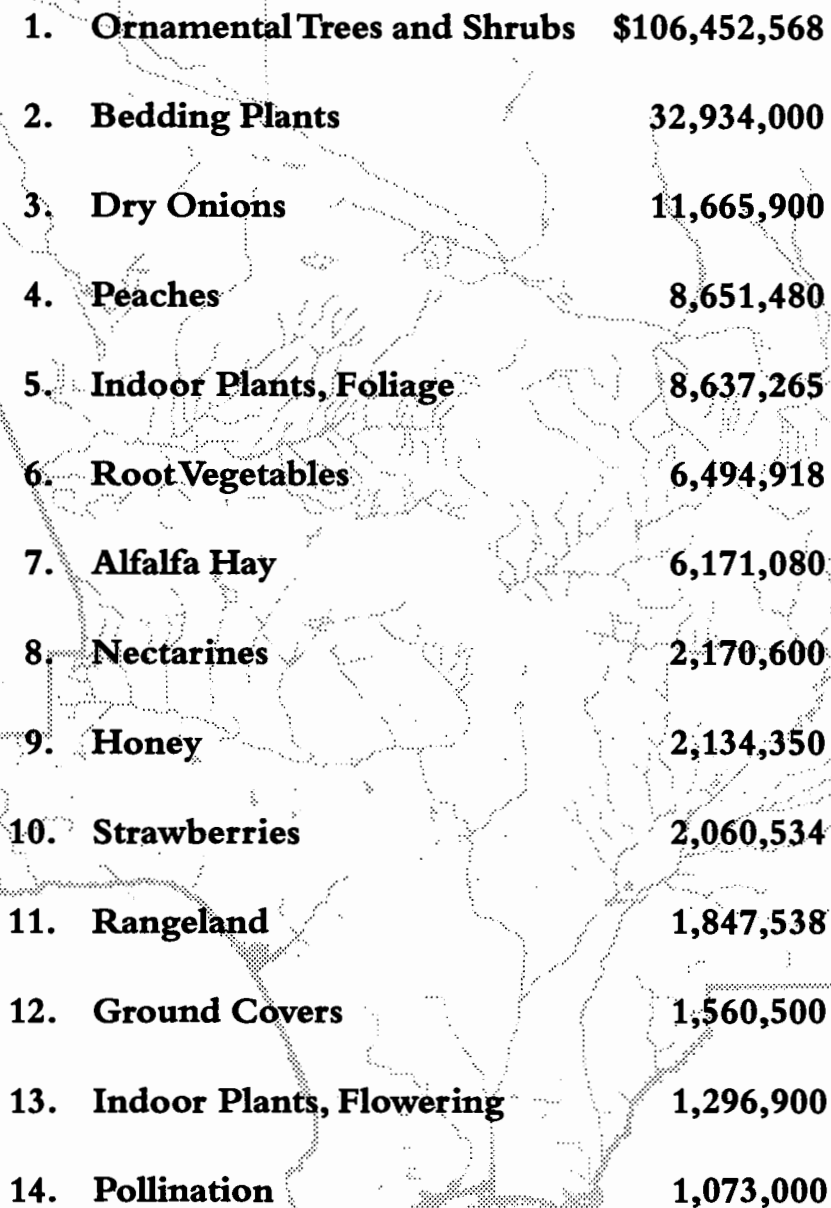
E. Leon Spaugy
Agricultural Commissioner/
Director of Weights and Measures

*"Agriculture is the foundation of manufactures;
Since the productions of nature are the materials of Art."*

Edward Gibbon, "Decline and Fall of the Roman Empire"

This report was possible only through the cooperation of all the nurserymen, growers, governmental and private agencies, and others who provided the information necessary for its production. A special acknowledgement and thank you to staff members Raymond Smith, for the pen-and-ink crop report cover, and to Miguel Angel Gonzalez and Julia Chen, for the report layout and for compiling and computerizing the statistics.

Million Dollar Crops



1.	Ornamental Trees and Shrubs	\$106,452,568
2.	Bedding Plants	32,934,000
3.	Dry Onions	11,665,900
4.	Peaches	8,651,480
5.	Indoor Plants, Foliage	8,637,265
6.	Root Vegetables	6,494,918
7.	Alfalfa Hay	6,171,080
8.	Nectarines	2,170,600
9.	Honey	2,134,350
10.	Strawberries	2,060,534
11.	Rangeland	1,847,538
12.	Ground Covers	1,560,500
13.	Indoor Plants, Flowering	1,296,900
14.	Pollination	1,073,000

Summary

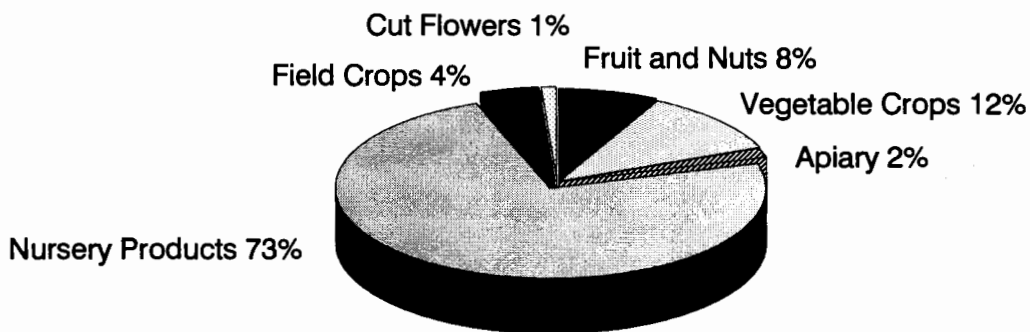
<u>Commodity</u>	<u>1993</u>	<u>1994</u>	<u>1995</u>
Nursery Products	144,835,163	151,726,383	154,687,653
Vegetable Crops	20,802,750	18,836,679	24,351,803
Fruit and Nuts	20,205,805	17,908,041	15,825,717
Field Crops	10,512,096	9,078,067	9,359,298
Apiary, Livestock, and Poultry Products	8,499,450	9,153,507	* 3,227,350
Livestock and Poultry	6,733,256	7,335,447	** --
Cut Flowers	2,232,417	1,898,573	2,221,078
Subtotal	213,820,937	215,936,697	209,672,899
Forest Products	<u>189,776</u>	<u>177,415</u>	<u>177,850</u>
Grand Total	\$214,010,713	\$216,114,112	\$209,850,749

* Exclude Livestock and poultry products.

** Due to budget cuts in L.A. County Veterinary Services, figures are not available.

CROP VALUE SUMMARY

Total Value \$209,850,749



Nursery Products

<u>Item</u>	<u>Year</u>	<u>House Sq. Ft.</u>	<u>Field Acres</u>	<u>Total</u>
Ornamental Trees and Shrubs	1995	5,254,372	1,679.7	\$106,452,568
	1994	5,135,162	1,765.2	\$99,094,568
Bedding Plants	1995	1,018,898	155.5	32,934,000
	1994	2,608,890	269.3	29,675,700
Indoor Plants, Foliage	1995	955,390	16.2	8,637,265
	1994	942,060	13.8	12,095,304
Ground Covers	1995	674,080	41	1,560,500
	1994	873,670	45.9	3,761,848
Indoor Plants, Flowering	1995	106,786	5	1,296,900
	1994	308,984	12.6	1,633,465
Miscellaneous	1995	3,782,630	237.3	3,806,420
	1994	84,280	281.2	5,465,498
Includes vegetable plants, orchids, cacti, and sod.				
TOTAL	1995	11,792,156	2,134.6	\$154,687,653
	1994	9,953,046	2,388.0	\$151,726,383

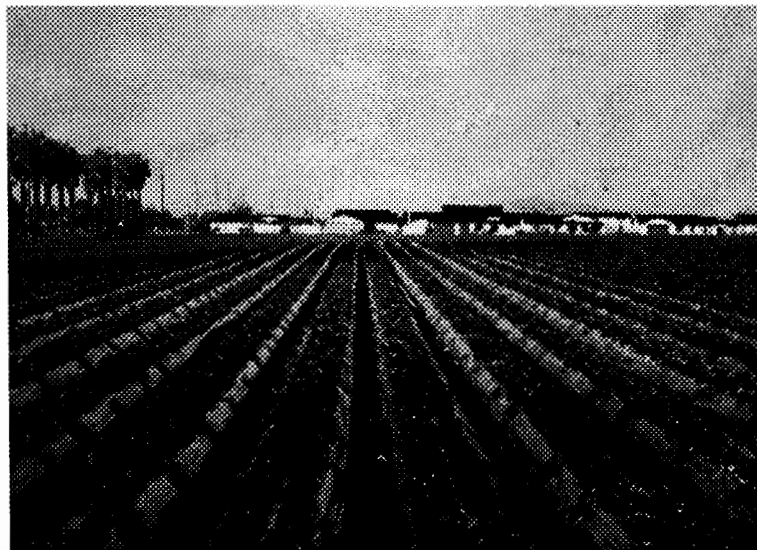
Vegetable Crops

<u>Crop</u>	<u>Year</u>	<u>Acres</u>	<u>Production</u>		<u>Unit</u>	<u>Value</u>	
			<u>Per Acre</u>	<u>Total</u>		<u>Per Unit</u>	<u>Total</u>
Dry Onions	1995	1,669	24.96	41,658	Ton	\$280	\$11,665,900
	1994	1,346	26.24	35,325	Ton	361	12,720,000
Sweet Corn	1995	155	5.94	920	Ton	371	341,754
	1994	205	4.88	1,001	Ton	431	431,425
Table Greens	1995	200					1,927,062
	1994	220	Includes oriental specialties and leaf lettuce.				
Vine Crops	1995	240					1,087,520
	1994	254	Includes pumpkins, melons and tomatoes.				
Root Vegetables	1995	549					6,494,918
	1994	21	Includes beets and carrots.				
Miscellaneous	1995	174					2,834,649
	1994	123	Includes herbs and bean sprouts.				
TOTAL	1995	2,987					\$24,351,803
	1994	2,169					\$18,836,680

Fruit and Nut Crops

<u>Crop</u>	<u>Year</u>	<u>Acreage</u>	<u>Production</u>		<u>Unit</u>	<u>Value</u>	
			<u>Per Acre</u>	<u>Total</u>		<u>Per Unit</u>	<u>Total</u>
Peaches (Freestone)	1995	732	13.00	9,506	Ton	\$910	\$8,651,480
	1994	720	18.06	13,000		823	10,700,000
Nectarines	1995	110	19.71	2,171	Ton	1,000	2,170,600
	1994	110	20.00	2,200		1,000	2,200,000
Strawberries	1995	162	14.53	2,354	Ton	875	2,060,534
	1994	359	9.90	3,554		761	2,705,386
Avocados	1995	174	4.35	757	Ton	1,301	985,160
	1994	158	1.83	290		1,119	324,260
Apples*	1995	70	8.49	597	Ton	900	537,000
Plums*	1995	28	11	308	Ton	1,300	400,400
Cherries	1995	140	.95	133	Ton	2,500	332,500
	1994	140	1.50	210		2,000	420,000
Miscellaneous	1995	197					688,043
	1994	594	Includes citrus, and other fruits and nuts.				
TOTAL	1995	1,613					\$15,825,717
	1994	2,081					17,908,041

* New crop in 1995



Strawberry Production in the San Gabriel Valley

Field Crops

<u>Crop</u>	<u>Year</u>	<u>Acreage</u>	<u>Per Acre</u>	<u>Production</u>		<u>Value</u>	
				<u>Total</u>	<u>Unit</u>	<u>Per Unit</u>	<u>Total</u>
Alfalfa Hay	1995	5,480	8.71	47,720	Ton	\$129	\$6,171,080
	1994	5,565	8.34	46,394	Ton	144	6,690,040
Grain Hay	1995	2,958	2.11	6,256	Ton	106	660,200
	1994	2,450	2.0	4,900	Ton	107	526,400
Barley	1995	2,890	.71	2,066	Ton	130	267,648
	1994	1,387	.73	1,006	Ton	102	102,761
Miscellaneous	1995	1,097 *	Value includes wheat grain, irrigated pasture and grazing privileges on stubble. * Excluding stubble.				412,832
	1994	886 *					358,866
Rangeland	1995	240,335					1,847,538
	1994	240,000					1,400,000
TOTAL	1995	12,425 **	** Excluding rangeland.				\$9,359,298
	1994	10,288 **					9,078,067



Apiary Products

Bee colony inspection reduces losses due to pests and diseases of bees.

<u>Item</u>	<u>Year</u>	<u>Production</u>	<u>Unit</u>	<u>Per Unit</u>	<u>Value</u>	
						<u>Total</u>
Honey	1995	4,185,000	Lb.	\$.51		\$2,134,350
	1994	4,750,000	Lb.	.48		2,280,000
Pollination	1995	29,000	Hive	37.00		1,073,000
	1994	28,000	Hive	36.75		1,029,000
Beewax	1995	12,500	Lb.	1.6		20,000
	1994	11,000	Lb.	1.4		15,400
Total	1995					\$3,227,350
	1994					3,324,400

Cut Flowers and Decoratives

<u>Item</u>	<u>Year</u>	<u>House Sq. Ft.</u>	<u>Field Acres</u>	<u>Quantity</u>		<u>Value</u>	
				<u>Sold</u>	<u>Unit</u>	<u>Per Unit</u>	<u>Total</u>
Christmas Trees	1995		111	22,766	Tree	\$34.39	\$782,892
	1994		171	30,693	Tree	30.50	936,048
Carnations	1995		2.83	806,005	Bloom	.22	178,410
	1994		4.5	750,800	Bloom	.22	164,098
Chrysanthemums	1995	18,096	3				53,926
	1994		4				110,345
Miscellaneous	1995	512,200	78.74	Includes <u>Strelitzia</u> , <u>Gypsophila</u> , and all			1,205,850
	1994	98,328	81.75	other cut flowers.			688,082
TOTAL	1995	530,296	195.57				\$2,221,078
	1994	98,328	261.25				\$1,898,573

Forest Products

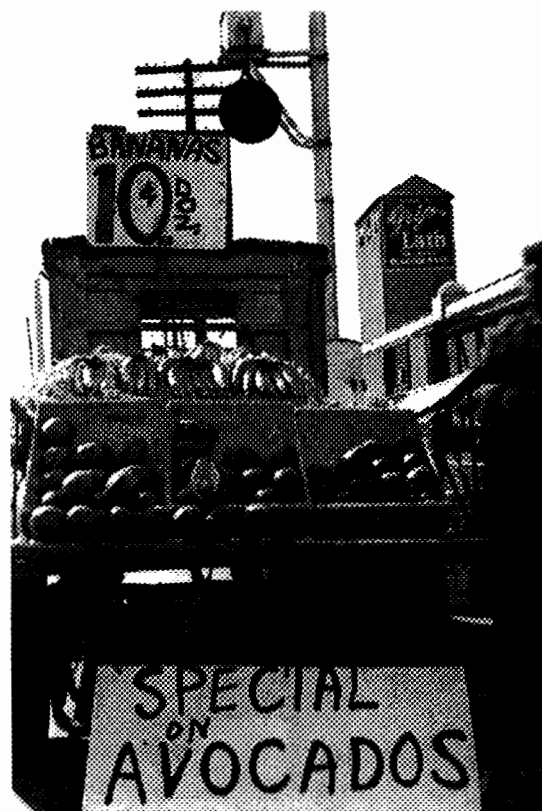
<u>Item</u>	<u>Year</u>	<u>Production</u>	<u>Unit</u>	<u>Price</u>	<u>Value</u>
Firewood	1995	1,200	Cord	\$30.00	\$36,000
	1994	856	Cord	35.00	29,960
Timber	1995				141,850 *
	1994	Miscellaneous Products			147,455
TOTAL	1995				\$177,850
	1994				177,415

* Figures obtained from State Board of Equalization, Timber Tax Division

Sustainable Agriculture Reporting

Organic Farming Statistics 1995

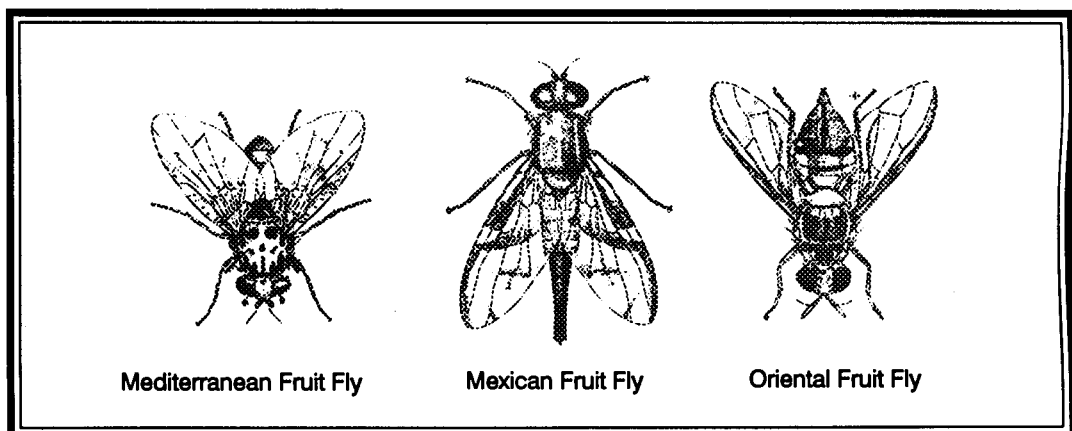
<u>Crop</u>	<u>Estimated Acre</u>	
	<u>1994</u>	<u>1995</u>
Apples	7	8
Avocados	4	6
Peaches	9	14
Herbs (including sprouts)	50	55
Cherries	19	19
Nectarines	5	5
Asian Pears	7	8
Pears	5	5
Vegetables (including oriental & lettuce)	27	28
Misc. Trees	15	17
Total	<u>148</u>	<u>165</u>



	<u>Farms</u>	<u>Acres</u>
1995	21	165
1994	21	148

Pest Detection Activities

<u>Pest</u>	<u>Number of Traps</u>		<u>Scope of Programs</u>
	<u>Pest Detection</u>	<u>Pest Eradication</u>	
Mediterranean Fruit Fly	5,300	0	0 Detection
Mexican Fruit Fly	4,920	286	7 Detections
Oriental Fruit Fly	4,900	175	7 Detections
Melon Fruit Fly	4,900	0	0 Detection
Gypsy Moth	3,500	200	2 Detections
Japanese Beetle	3,200	710	2 Detections (LAX)
European Corn Borer	17	0	0 Detection
European Pine Shoot Moth	32	0	0 Detection
Khapra Beetle	478	0	0 Detection
Africanized Honey Bee	42	0	0 Detection
TOTAL	27,289	1,371	18 Detections



Pest Eradication Activities

<u>Pest</u>	<u>Method</u>	<u>Scope of Program</u>
Mediterranean Fruit Fly	Steriles Released Exclusion - Quarantine	24,712.57 Million Released 915 Sq. Miles/ 201,268 Lbs. Fruit Seized
Oriental Fruit Fly	Male Annihilation Treatments	2 Treatment Areas
Mexican Fruit Fly	Steriles Released Exclusion - Quarantine	112 Million Released 61 Sq. Miles
Alligatorweed	Gross Area Inspected Herbicide Treatment (Net Area)	7,925 Acres *
Halogeton	Mechanical Control and Chemical Treatment	1,000 Sq. Ft. Treated

* Whittier Narrows Dam Basin Restoration Project - inspection by our staff

Biological Control Activities

<u>Pest</u>	<u>Agent/Mechanism</u>	<u>Scope of Programs</u>
Mediterranean Fruit Fly	(Steriles)	24,712.57 Million Sterile Fruit Flies Released
Mexican Fruit Fly	(Steriles)	112 Million Sterile Fruit Flies Released

Pest Exclusion Activities

<u>Pest Exclusion Violations Issued</u>	<u>Number of Violations Issued</u>
Infested/Presume Infested	124
Plum Curculio/Apple, Blueberry Maggot	45
Markings	37
Foreign Fruits and Vegetables	34
Burrowing Nematode	32
Caribbean Fruit Fly	21
Citrus Pests	15
Cherry Fruit Fly	14
European Corn Borer	9
Peach Yellow/Red Suture	8
Mexican Fruit Fly	7
Failure to Hold Plant Material For Inspection	5
Ozonium Root Rot	5
Peach Rosette Disease	5
Corn/Sugarcane Borer	4
Japanese Beetle	4
European Pine Shoot Moth	3
Chestnut Bark/Oak Wilt Disease	2
West Indian Sugarcane Root Borer	1
Cereal Leaf Beetle	1
Sweet Potato Weevil	1
Fruits and Vegetables From Hawaii	1
Gypsy Moth/Brown Tail Moth	1
Imported Fire Ant	1
	<hr/>
Total	380

Pest Exclusion Activities

<u>Pest Intercepted</u> <u>Common Name / Genus Species</u>	<u>Material</u>	<u>Source*</u>	<u>Scope of Program</u> <u>Pest Interceptions</u>
Moth Unknown	Basil	Quar	1
Spiraling whitefly <i>Aleurodicus dispersus</i>	Cut flowers Orchids	Quar	6
Spiraling whitefly (egg tracks) <i>Aleurodicus dispersus</i> (dead)	Cut flowers	Quar	2
Giant whitefly <i>Aleurodicus dugesii</i>	Hibiscus <i>Solandra hartwegii</i>	Pub	4
Woolly whitefly <i>Aleurothrixus floccosus</i>	Citrus Orange Guava	Nurs Pub Det	10
Mexican leafroller <i>Amorbia emigratella</i>	[unknown]	Quar	2
Mexican fruitfly <i>Anastrepha ludens</i>	Citrus (orange) Sapote	Det	12
Coffee bean weevil <i>Araecerus fasciculatus</i>	Peach	Det	2
Oriental fruitfly <i>Bactrocera dorsalis</i>	Citrus (lemon) Fig Guava Olive Peach	Det	12
Snail <i>Bradybaena similaris</i>	Anthurium Chrysalidocarpus <i>Ficus benjamina</i> <i>Ravenea rivularis</i> <i>Rhapis excelsa</i> Schefflera Vegetables Chamaedorea	Quar Det	20

Pest Exclusion Activities

<u>Pest Intercepted</u> <u>Common Name/Genus Species</u>	<u>Material</u>	<u>Source*</u>	<u>Scope of Program</u> <u>Pest Interceptions</u>
Green garden looper <i>Chrysodeixis eriosoma</i>	Basil Herbs	Quar	4
Slender soft scale <i>Coccus acutissimus</i>	<i>Cycas revoluta</i>	Quar	2
Narrow-winged katydid <i>Elimaea punctifera</i>	Basil	Quar	2
Glassy-winged leafhopper <i>Homalodisca coagulata</i>	<i>Ficus benjamina</i> House	Nurs Pub	4
Mining scale <i>Howardia biclavis</i>	<i>Ficus benjamina</i> Plants	Quar	10
Gypsy moth <i>Lymantria dispar</i>	Aluminum ladder BBQ grill Lawn items Ornamental tree Wheelbarrow	Quar	14
Gypsy moth (larval skin) <i>Lymantria dispar</i>	Wooden lawn chair	Quar	2
Mealybug <i>Nipaecoccus</i> sp. nov.	<i>Trachycarpus fortunei</i>	Nurs	4
Perseae mite <i>Oligonychus perseae</i>	Avocado Det	Pub Nurs	16
European corn borer <i>Ostrinia nubilalis</i>	Bell Pepper Corn	Quar	4
Nesting whitefly <i>Paraleyrodes minei</i>	Avocado Citrus (orange) <i>Melaleuca</i> <i>Pyrus communis</i> <i>Lauris nobilis</i>	Pub Nurs Det	14

Pest Exclusion Activities

<u>Pest Intercepted</u> <u>Common Name / Genus Species</u>	<u>Material</u>	<u>Source*</u>	<u>Scope of Program</u> <u>Pest Interceptions</u>
Ant <i>Pheidole fervens</i>	In cracks of sidewalk	Pub	2
Big-headed ant <i>Pheidole megacephala</i>	Basil Bromeliads Cut flowers Ti	Quar	14
Lesser snow scale <i>Pinnaspis strachani</i>	Chamaedorea Cut flowers Ti	Quar	6
Japanese beetle <i>Popillia japonica</i>	Indian cilantro Tree Wild iris	Quar Det	6
Pyriform scale <i>Protopulvinaria pyriformis</i>	Avocado <i>Fatsia japonica</i> <i>Lauris nobilis</i> <i>Melaleuca</i>	Nurs	8
Magnolia white scale <i>Pseudaulacaspis cockerelli</i>	Areca palm Chamaedorea Cut flowers <i>Cycas revoluta</i> Mylee leaves Palm frond <i>Phoenix roebelenii</i>	Nurs Quar	18
Green shield scale <i>Pulvinaria psidii</i>	Ginger <i>Melaleuca</i> <i>Schinus</i> sp. <i>Schinus terebinthifolius</i>	Quar Nurs	8
Soil mealybug <i>Rhizoecus hibisci</i>	<i>Ravenia rivularis</i> <i>Cycas revoluta</i> Unknown leaves	Quar	4
Rufus scale <i>Selenaspidus articulatus</i>	Ginger	Quar	2

Pest Exclusion Activities

<u>Pest Intercepted</u> <u>Common Name/Genus Species</u>	<u>Material</u>	<u>Source*</u>	<u>Scope of Program</u> <u>Pest Interceptions</u>
Red imported fire ant <i>Solenopsis invicta</i>	Truck trailer	Quar	2
Two-spotted leafhopper <i>Sophonia rufofascia</i>	Cut flowers	Quar	2
Black-headed ant <i>Tapinoma melanocephalum</i>	Cut flowers	Quar	2
White-footed ant <i>Technomyrmex albipes</i>	Cut flowers Ginger	Quar	18
Tortoise scale <i>Toumeyella</i> sp. nov.	<i>Erythrina</i> sp.	Pub	2
Slug <i>Veronicella</i> sp.	Herbs Taro leaves	Quar	6
Little fire ant <i>Wasmannia auropunctata</i>	Kenepas fruits	Quar	2
Cuban snail <i>Zachrysia provisoria</i>	Ficus <i>Spathiphyllum</i>	Quar	6
			258

*Source: Det: Detection Nurs: Nursery Pub: Public Quar: Quarantine



**Los Angeles County Agricultural Commissioner /
Weights and Measures Department
3400 La Madera Avenue
El Monte, California 91732**

