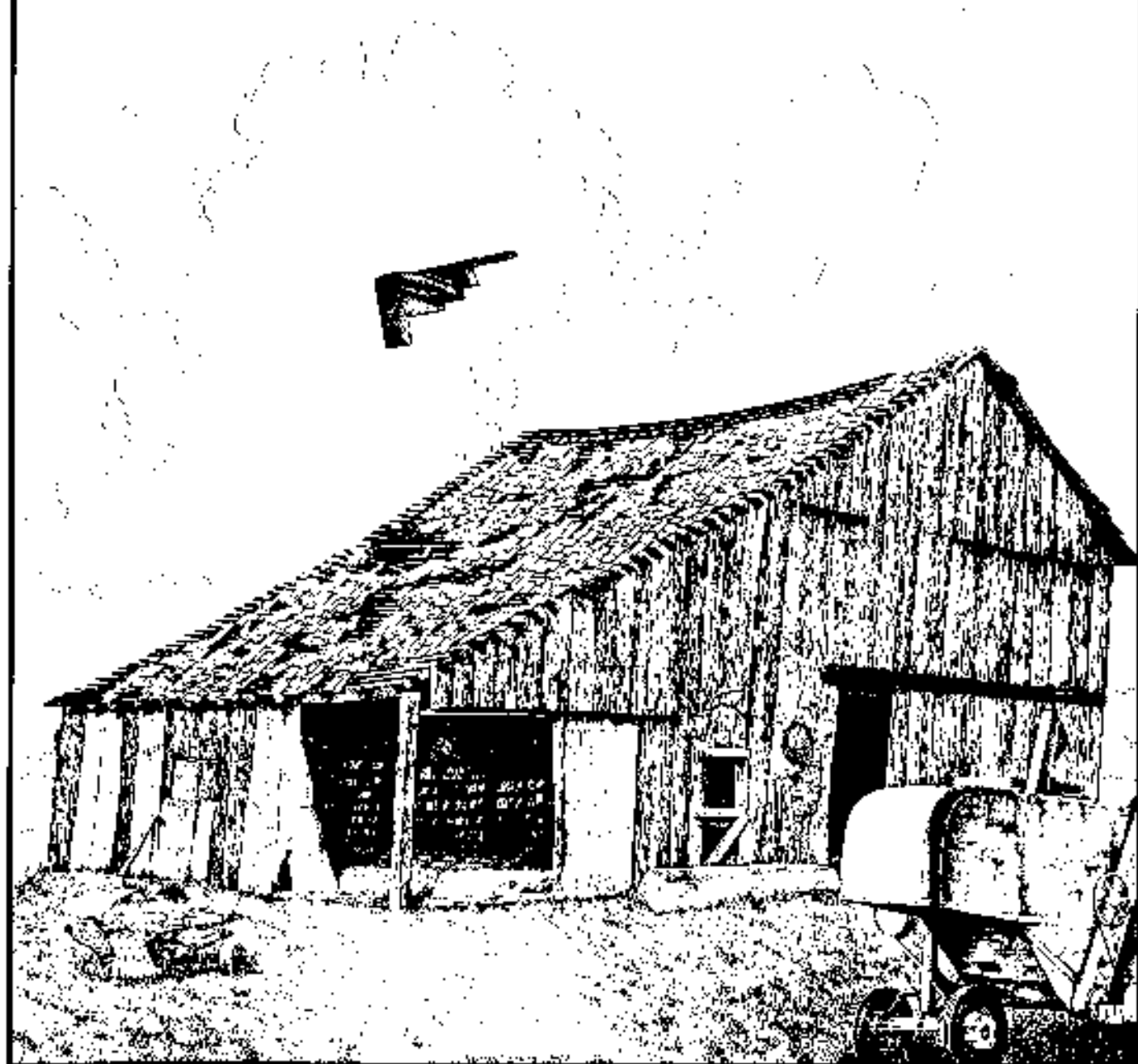


# LOS ANGELES COUNTY

AGRICULTURAL COMMISSIONER/  
WEIGHTS AND MEASURES DEPARTMENT



1996 CROP REPORT



**E. Leon Spaugy**  
Agricultural Commissioner/  
Director of Weights and Measures

**COUNTY OF LOS ANGELES**

**Department of  
Agricultural Commissioner  
and Weights and Measures**

**3400 La Madera Avenue  
El Monte, California 91732**

**Cato R. Fiksdal**  
Chief Deputy

**1996 Crop Report**

**Ann M. Veneman, Secretary  
California Department of Food and Agriculture**

and

**The Honorable Board of Supervisors  
County of Los Angeles**

In accordance with the provisions of Section 2272 of the California Food and Agricultural Code, it is with pleasure that I submit the 1996 Crop Report on the acreage, yield, and gross value of agricultural commodities produced in Los Angeles County.

The overall gross value of agricultural crops and products for 1996 is estimated to be \$222,238,450. This represents a 5.9% increase from the estimated \$209,850,749 for 1995.

Nursery Products continues as the leading gross value commodity category with an increase of over 5%. Small increases also occurred in Vegetable, Fruit and Nuts, and Field Crops. Sweet corn acreage more than doubled and carrot acreage increased in the Antelope Valley from 549 acres in 1995 to 2,328 acres in 1996. Production of Cut Flowers and Decoratives decreased due to the large influx of competing imports.

The production values in this report represent gross values and do not reflect the cost of production. I wish to express my sincere appreciation to all the nursery owners, growers, governmental and private agencies who provided the information necessary for this report.

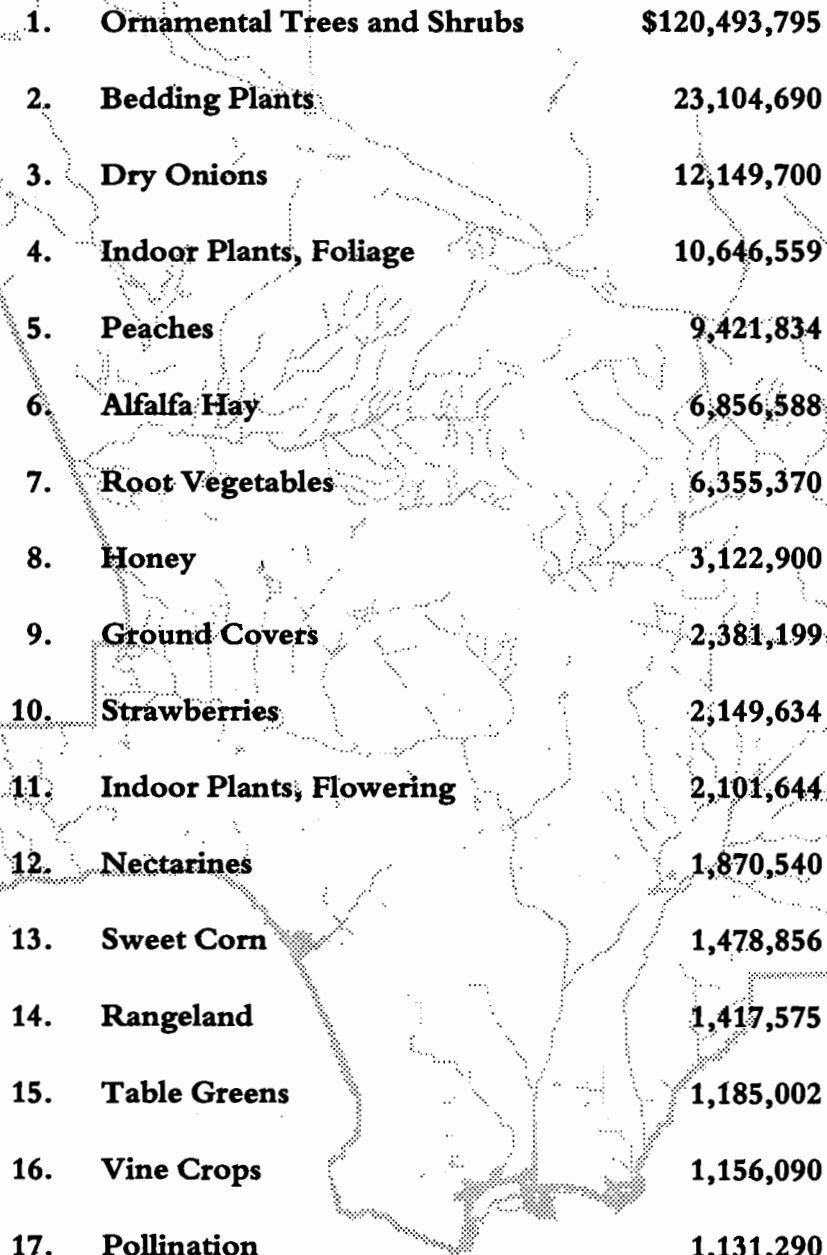
Respectfully submitted,

**E. Leon Spaugy**  
Agricultural Commissioner/  
Director of Weights and Measures

*“ The first and most respectable  
of all the arts is agriculture.”*

*Rousseau*

# Million Dollar Crops



1.	<b>Ornamental Trees and Shrubs</b>	<b>\$120,493,795</b>
2.	<b>Bedding Plants</b>	<b>23,104,690</b>
3.	<b>Dry Onions</b>	<b>12,149,700</b>
4.	<b>Indoor Plants, Foliage</b>	<b>10,646,559</b>
5.	<b>Peaches</b>	<b>9,421,834</b>
6.	<b>Alfalfa Hay</b>	<b>6,856,588</b>
7.	<b>Root Vegetables</b>	<b>6,355,370</b>
8.	<b>Honey</b>	<b>3,122,900</b>
9.	<b>Ground Covers</b>	<b>2,381,199</b>
10.	<b>Strawberries</b>	<b>2,149,634</b>
11.	<b>Indoor Plants, Flowering</b>	<b>2,101,644</b>
12.	<b>Nectarines</b>	<b>1,870,540</b>
13.	<b>Sweet Corn</b>	<b>1,478,856</b>
14.	<b>Rangeland</b>	<b>1,417,575</b>
15.	<b>Table Greens</b>	<b>1,185,002</b>
16.	<b>Vine Crops</b>	<b>1,156,090</b>
17.	<b>Pollination</b>	<b>1,131,290</b>
18.	<b>Avocados</b>	<b>1,094,770</b>

# Summary

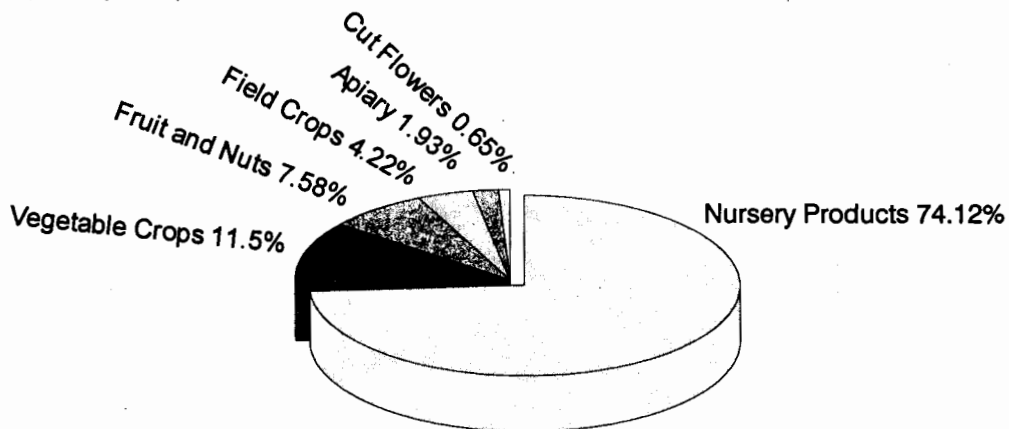
<u>Commodity</u>	<u>1994</u>	<u>1995</u>	<u>1996</u>
Nursery Products	151,726,383	154,687,653	164,633,028
Vegetable Crops	18,836,679	24,351,803	25,546,133
Fruit and Nuts	17,908,041	15,825,717	16,825,475
Field Crops	9,078,067	9,359,298	9,369,999
Apiary, Livestock and Poultry Products	9,153,507	3,227,350 *	4,277,690 *
Livestock and Poultry	7,335,447	-- **	-- **
Cut Flowers and Decoratives	1,898,573	2,221,078	1,452,564
Subtotal	215,936,697	209,672,899	222,104,889
Forest Products	177,415	177,850	133,561
<b>Grand Total</b>	<b>\$216,114,112</b>	<b>\$209,850,749</b>	<b>\$222,238,450</b>

\* Excludes livestock and poultry products.

\*\* Figures are not available due to budget cuts in L.A. County Veterinary Services.

## CROP VALUE SUMMARY

Total Value \$222,238,450



# Nursery Products

<u>Item</u>	<u>Year</u>	<u>Green House Sq. Ft.</u>	<u>Field Acres</u>	<u>Total Value</u>
Ornamental Trees and Shrubs	1996	6,831,056	1,818.7	\$120,493,795
	1995	5,254,372	1,679.7	106,452,568
Bedding Plants	1996	680,150	99.8	23,104,690
	1995	1,018,898	155.5	32,934,000
Indoor Plants, Foliage	1996	1,384,300	17.9	10,646,559
	1995	955,390	16.2	8,637,265
Ground Covers	1996	836,200	42.8	2,381,199
	1995	674,080	41	1,560,500
Indoor Plants, Flowering	1996	291,240	7.3	2,101,644
	1995	106,786	5	1,296,900
Miscellaneous	1996	3,143,833	310.9	5,905,141
	1995	3,782,630	237.3	3,806,420
Includes vegetable plants, orchids, cacti, and sod.				
<b>TOTAL</b>	1996	13,166,779	2,297.4	\$164,633,028
	1995	11,792,156	2,134.6	154,687,653

# Vegetable Crops

<u>Crop</u>	<u>Year</u>	<u>Acreage</u>	<u>Production</u>		<u>Unit</u>	<u>Value</u>	
			<u>Per Acre</u>	<u>Total</u>		<u>Per Unit</u>	<u>Total</u>
<b>Dry Onions</b>	1996	1,523.5	22.25	33,909	Ton	\$347	\$12,149,700
	1995	1,669	24.96	41,658		280	11,665,900
<b>Sweet Corn</b>	1996	504	6.10	3,075	Ton	480	1,478,856
	1995	155	5.94	920		371	341,754
<b>Table Greens</b>	1996	216	Includes Oriental specialties and leaf lettuce.				1,185,002
	1995	200					1,927,062
<b>Vine Crops</b>	1996	248	Includes pumpkins, melons and tomatoes.				1,156,090
	1995	240					1,087,520
<b>Root Vegetables</b>	1996	2,328	Includes beets and carrots.				6,355,370
	1995	549					6,494,918
<b>Miscellaneous</b>	1996	174	Includes herbs and green onions.				3,221,115
	1995	174					2,834,649
<b>TOTAL</b>	1996	4,994.5					\$25,546,133
	1995	2,987					24,351,803

# Fruit and Nut Crops

<u>Crop</u>	<u>Year</u>	<u>Production</u>			<u>Unit</u>	<u>Value</u>	
		<u>Acreage</u>	<u>Per Acre</u>	<u>Total</u>		<u>Per Unit</u>	<u>Total</u>
Peaches	1996	650	7.15	4,763	Ton	\$763	\$9,421,834
	1995	732	13.00	9,506		910	8,651,480
Nectarines	1996	110	14.75	1,870	Ton	1,040	1,870,540
	1995	110	19.71	2,171		1,000	2,170,600
Strawberries	1996	186	22.53	2,600	Ton	1,442	2,149,634
	1995	162	14.53	2,354		875	2,060,534
Avocados	1996	153	7.46	804	Ton	1,207	1,094,770
	1995	174	4.35	757		1,301	985,160
Apples	1996	70	7.25	631	Ton	1,030	631,457
	1995	70	8.49	597		900	537,000
Plums	1996	28	11	308	Ton	1,300	400,461
	1995	28	11	308		1,300	400,400
Cherries	1996	140	.75	105	Ton	2,500	262,500
	1995	140	.95	133		2,500	332,500
Miscellaneous	1996	220	Includes citrus, and other fruits and nuts.				994,279
	1995	197					688,043
<b>TOTAL</b>	1996	<b>1,557</b>					<b>\$16,825,475</b>
	1995	<b>1,613</b>					<b>15,825,717</b>

# Field Crops

<u>Crop</u>	<u>Year</u>	<u>Acreage</u>	<u>Per Acre</u>	<u>Production</u>		<u>Value</u>	
				<u>Total</u>	<u>Unit</u>	<u>Per Unit</u>	<u>Total</u>
Alfalfa Hay	1996	5,566	7.80	47,714	Ton	\$110	\$6,856,588
	1995	5,480	8.71	47,720		129	6,171,080
Grain Hay	1996	1,900	2.50	4,100	Ton	95	435,500
	1995	2,958	2.11	6,256		106	660,200
Barley	1996	2,887	1.60	3,329	Ton	109	297,955
	1995	2,890	0.71	2,066		130	267,648
Miscellaneous	1996	982 *	Value includes sudan hay, oat hay, wheat grain, irrigated pasture and grazing privileges on stubble. * Excluding stubble.				362,381
	1995	1,097 *					412,832
Rangeland	1996	200,370					1,417,575
	1995	240,335					1,847,538
TOTAL	1996	11,335 **	** Excluding rangeland and stubble.				\$9,369,999
	1995	12,425 **					9,359,298

# Apiary Products

<u>Item</u>	<u>Year</u>	<u>Production</u>	<u>Unit</u>	<u>Value</u>	
				<u>Per Unit</u>	<u>Total</u>
Honey	1996	3,674,000	Lb.	\$.85	\$3,122,900
	1995	4,185,000		.51	2,134,350
Pollination	1996	27,260	Hive	41.50	1,131,290
	1995	29,000		37.00	1,073,000
Beeswax	1996	11,750	Lb.	2.00	23,500
	1995	12,500		1.60	20,000
Total	1996				\$4,277,690
	1995				3,227,350



# Cut Flowers and Decoratives

<u>Item</u>	<u>Year</u>	<u>Green House Sq. Ft.</u>	<u>Field Acres</u>	<u>Quantity</u>		<u>Value</u>	
				<u>Sold</u>	<u>Unit</u>	<u>Per Unit</u>	<u>Total</u>
Christmas Trees	1996		107	20,659	Tree	\$31.66	\$687,816
	1995		111	22,766		34.39	782,892
Carnations	1996		1	200,000	Bloom	.20	40,000
	1995		2.83	806,005		.22	178,410
Chrysanthemums	1996	19,600	4				71,322
	1995	18,096	3				53,926
Miscellaneous	1996	168,480	62.04	Includes orchids, ranunculus,			653,425
	1995	512,200	78.74	pompoms, and all other cut flowers.			1,205,850
TOTAL	1996	188,080	174.04				\$1,452,563
	1995	530,296	195.57				2,221,078

# Forest Products

<u>Item</u>	<u>Year</u>	<u>Production</u>	<u>Unit</u>	<u>Price</u>	<u>Value</u>
Firewood	1996	803	Cord	\$30.00	\$24,090
	1995	1,200		30.00	36,000
Timber	1996				109,471
	1995	Miscellaneous Products.			141,850
TOTAL	1996				\$133,561
	1995				177,850

# Sustainable Agriculture Reporting

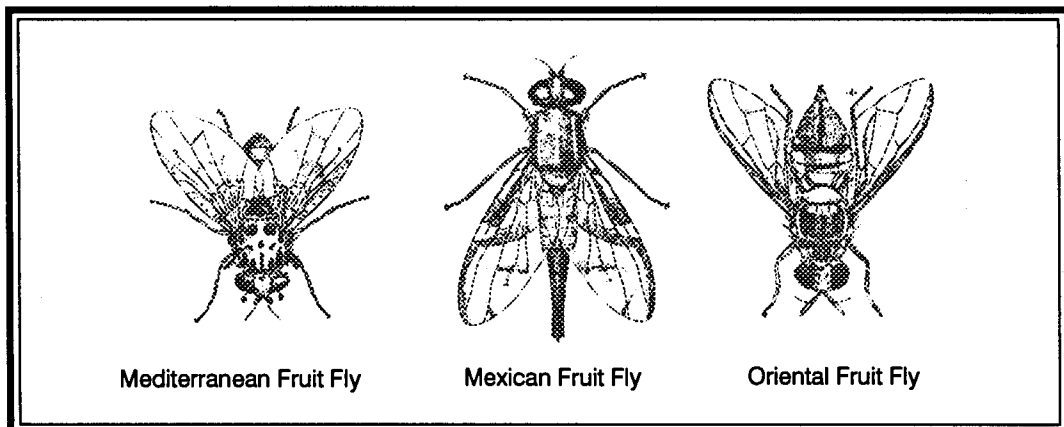
## ORGANIC FARMING STATISTICS

<u>Crop</u>	<u>Estimated Acres</u>	
	<u>1995</u>	<u>1996</u>
Apples	8	8
Avocados	6	7
Peaches	14	10
Herbs (including sprouts)	55	56
Grapes	-	25
Cherries	19	19
Nectarines	5	4
Asian Pears	8	8
Pears	5	4
Vegetables (including Oriental & lettuce)	28	29
Misc. Trees	17	17
<b>Total</b>	<b>165</b>	<b>187</b>

	<u>Farms</u>	<u>Acres</u>
1996	22	187
1995	21	165

# Pest Detection Activities

<u>Pest</u>	<u>Number of Traps</u>		<u>Specimens Trapped</u>
	<u>Pest Detection</u>	<u>Pest Eradication</u>	
Mediterranean Fruit Fly	5,050	0	1
Mexican Fruit Fly	4,900	1,003	3
Oriental Fruit Fly	4,900	200	11
Melon Fly	4,900	0	0
Gypsy Moth	3,500	100	1
Japanese Beetle	3,200	710	3 (LAX)
European Corn Borer	17	0	0
European Pine Shoot Moth	32	0	0
Khapra Beetle	336	0	0
Africanized Honey Bee	42	0	0
<b>TOTAL</b>	<b>26,877</b>	<b>2,013</b>	<b>19</b>



## Pest Eradication Activities

<u>Pest</u>	<u>Method</u>	<u>Scope of Program</u>
<b>Mediterranean Fruit Fly</b>	Steriles Released	6,632.48 Million Released
<b>Oriental Fruit Fly</b>	Male Annihilation Treatments	2 Treatment Areas
<b>Mexican Fruit Fly</b>	Exclusion - Quarantine	61 Sq. Miles
<b>Alligatorweed</b>	Gross Area Inspected Herbicide Treatment (Net Area)	5,798 Acres .05 Acre
<b>Halogeton</b>	Mechanical Control and Chemical Treatment	None *

\* No plants were found during calendar year 1996.

## Biological Control Activities

<u>Pest</u>	<u>Agent/Mechanism</u>	<u>Scope of Programs</u>
<b>Mediterranean Fruit Fly</b>	(Steriles)	6,632.48 Million Sterile Fruit Flies Released

# Pest Exclusion Activities

<u>Pest Exclusion Violations Issued</u>	<u>Number of Violations Issued</u>
Infested/Presume Infested	97
Markings	53
Peach Yellow/Red Suture	45
Caribbean Fruit Fly	38
Plum Curculio/Apple, Blueberry Maggot	38
Ozonium Root Rot	37
Citrus Pests	34
Foreign Fruits and Vegetables	33
Burrowing and Reniform Nematode	15
Peach Rosette Disease	13
Cherry Fruit Fly	9
European Corn Borer	8
Failure to Hold Plant Material For Inspection	6
Citrus Canker	5
Japanese Beetle	5
Mexican Fruit Fly	4
Cereal Leaf Beetle	3
Corn/Sugarcane Borer	2
Cotton Pests	2
Imported Fire Ant	2
Chestnut Bark/Oak Wilt Disease	1
European Pine Shoot Moth	1
Gypsy Moth/Brown Tail Moth	1
Nut Tree Pests	1
Persimmon Root Borer	1
Sugarcane Diseases	1
Sweet Potato Weevil	1
<b>Total</b>	<b>456</b>

# Pest Exclusion Activities

<u>Pest Intercepted</u> <u>Common Name / Genus species</u>	<u>Material</u>	<u>Source*</u>	<u>Scope of Program</u> <u>Pest Interceptions</u>
Moth pupa	Lalot	Quar	1
Katydid (larva)	Cut flowers	Quar	1
Long horned grasshopper	Ti	Quar	1
Mirid bug	Lalot	Quar	1
Mirid bug (larva)	Herbs	Quar	1
Moth (larva)	Basil Herbs	Quar	1
Moth larva	Basil	Quar	1
Pyralid moth	Herbs	Quar	1
Snail	Cut flowers	Quar	1
Stink bug (eggs, larvae)	Basil	Quar	1
Stink bug (larva)	Basil	Quar	1
Stink bug eggs (inviabile)	Basil Herbs	Quar	1
Tortoise shell beetle	Leaves	Quar	1
True bugs	Basil Lilac	Quar	1
Wasp larva	Ginger	Quar	1
Whitefly	Sweet basil	Quar	1
Cyanophyllum scale <i>Abgrallaspis</i> sp.	<i>Neoregalia</i>	Quar	2
Chinese rose beetle <i>Adoretus sinicus</i>	<i>Dracaena</i> Herbs	Quar	4
Whitefly <i>Aleurocerus</i> sp.	Betle leaves Lalot	Quar	6

# Pest Exclusion Activities

<u>Pest Intercepted</u> <u>Common Name / Genus species</u>	<u>Material</u>	<u>Source*</u>	<u>Scope of Program</u> <u>Pest Interceptions</u>
Whitefly (eggs only)	Herbs	Quar	6
Spiraling whitefly <i>Aleurodicus dispersus</i>	Basil Betle leaves <i>Chamaedorea</i> <i>Chamaedorea seifrizi</i> Cut flowers Ginger Herbs Lalot leaf Lilac Orchids Palm frond <i>Strelitzia</i> Tai leaf Ti <i>Xanthosoma</i>	Quar	76
Spiraling whitefly (egg tracks) <i>Chamaedorea seifrizi</i>	Betle leaves	Quar	76
Spiraling whitefly (eggs)	Betle leaves	Quar	76
Giant whitefly <i>Aleurodicus dugesi</i>	Iris Banana Apricot Mulberry	Pub	4
Woolly whitefly <i>Aleurothrixus floccosus</i>	Citrus Guava Mango Ginger Mexican guava	Pub Nurs Quar	18
A whitefly <i>Aleurotrachelus</i> sp.	Basil Betle leaves	Quar	6
Mexican leafroller <i>Amorbia emigratella</i>	Herbs	Quar	2
Mexican fruit fly <i>Anastrepha ludens</i>	Grapefruit Guava Mango	Det	6

# Pest Exclusion Activities

<u>Pest Intercepted</u> <u>Common Name / Genus species</u>	<u>Material</u>	<u>Source*</u>	<u>Scope of Program</u> <u>Pest Interceptions</u>
Fruit fly (larva) <i>Anastrepha</i> sp.	Green mango	Quar	2
Caribbean fruit fly <i>Anastrepha suspensa</i>	Green mango	Quar	2
Ant <i>Anoplolepis longipes</i>	<i>Rhapis</i>	Quar	2
Oriental scale <i>Aonidiella orientalis</i>	<i>Tamarindus indica</i>	Quar	2
Coconut scale <i>Aspidiotus destructor</i>	<i>Chrysalidocarpus</i> Cut flowers	Quar	6
Oriental fruit fly <i>Bactrocera dorsalis</i>	Apricot Grapefruit Lemon Orange Loquat Nectarine Ornamental tree Fig	Det	20       4
Oriental fruit fly larvae <i>Bactrocera</i> sp.	Papaya	Quar	
Ant <i>Brachymyrmex</i> sp.	Ginger	Quar	2
Snail <i>Bradybaena similaris</i>	Aquatic plants Areca palm <i>Ficus elastica</i> <i>Spathiphyllum</i> <i>Strelitzia</i>	Quar	18
Florida carpenter ant <i>Camponotus abdominalis</i>	Longan	Quar	2
Carpenter ant <i>Camponotus</i> sp.	Ginger	Quar	2
Flying ant <i>Camponotus variegatus</i>	Basil	Quar	2



# Pest Exclusion Activities

<u>Pest Intercepted</u> <u>Common Name/Genus species</u>	<u>Material</u>	<u>Source*</u>	<u>Scope of Program</u> <u>Pest Interceptions</u>
Red wax scale <i>Ceroplastes rubens</i>	Cut flowers Ginger <i>Ravenea rivularis</i>	Quar	6
Green garden looper <i>Chrysodeixis eriosoma</i>	Basil	Quar	2
Dictyosperm scale <i>Chrysomphalus dictyospermi</i>	<i>Tamarindus indica</i>	Quar	4
Slender soft scale <i>Coccus acutissimus</i>	<i>Cycas revoluta</i> <i>Euphoria longana</i>	Quar	4
Anthurium whitefly <i>Crenidorsum</i> sp.	<i>Anthurium</i>	Quar	2
Leafhopper <i>Gyponana germani</i>	Herbs	Quar	2
Leucaena psyllid <i>Heteropsylla cubana</i>	<i>Leucaena</i>	Nurs	2
Glassy-winged leafhopper <i>Homalodisca coagulata</i>	Orange <i>Euonymus</i> <i>Ficus</i> <i>Ficus nitida</i> Guava <i>Ulmus</i>	Det Nurs Pub	14
Mining scale <i>Howardia biclavis</i>	<i>Ficus benjamina</i>	Quar	6
Leafminer fly <i>Liriomyza sativae</i> or near	Melungai	Quar	2
Gypsy moth <i>Lymantria dispar</i>	<i>Pinus</i> Trailer	Det Quar	4
Scale <i>Malleolaspis</i> sp.	Palm seedling	Quar	2
Tetranychid mite <i>Mononychellus caribbeanae</i>	<i>Erythrina</i> (coral tree)	Nurs	2

# Pest Exclusion Activities

<u>Pest Intercepted</u> <u>Common Name / Genus species</u>	<u>Material</u>	<u>Source*</u>	<u>Scope of Program</u> <u>Pest Interceptions</u>
Perseae mite <i>Oligonychus perseae</i>	Avocado	Det Pub Nurs	6
Snail <i>Opeas</i> sp. or near	Neodypsis palms	Quar	2
Orchid weevil <i>Orchidophilus aterrimus</i>	Orchids	Quar	2
Mirid bug <i>Orthotylus</i> sp.	Cut flowers	Quar	4
Mealybug	<i>Ficus rubiginosa</i>	Nurs	4
Nesting whitefly <i>Paraleyrodes minei</i>	Avocado Citrus Guava	Pub Nurs	8
Bigheaded ant <i>Pheidole megacephala</i>	Basil Lilac Cut flower <i>Dracaena marginata</i> Ginger Herbs Neodypsis palms	Quar	24
A soft scale <i>Philephedra tuberculosa</i>	<i>Euphoria longana</i>	Quar	2
Boxwood scale <i>Pinnaspis buxi</i>	Ginger	Quar	2
Lesser snow scale <i>Pinnaspis strachani</i>	<i>Chamaedorea seifrizii</i> Cut flowers <i>Cycas revoluta</i> <i>Dracaena</i> <i>Dracaena warnecki</i> Ginger <i>Nolina</i> sp. Ti	Quar	20

# Pest Exclusion Activities

<u>Pest Intercepted</u> <u>Common Name / Genus species</u>	<u>Material</u>	<u>Source*</u>	<u>Scope of Program</u> <u>Pest Interceptions</u>
A leafroller <i>Platynota</i> sp.	Basil	Quar	2
Japanese beetle <i>Popillia japonica</i>	Flowers Turf Ornamental tree	Det	6
Pyriform scale <i>Protopulvinaria pyriformis</i>	<i>Lauris nobilis</i>	Nurs	4
Magnolia white scale <i>Pseudaulacaspis cockerelli</i>	Areca palm Bird of paradise Cut flowers <i>Cycas revoluta</i> Ginger <i>Heliconia</i> Lalot Malangai leaves <i>Mangifera indica</i> Palm frond <i>Phoenix roebelenii</i> <i>Ravenea rivularis</i> <i>Strelitzia</i> Unknown host	Quar Nurs	66
Banana mealybug <i>Pseudococcus elisae</i>	<i>Tamarindus indica</i>	Quar	2
Soft scale <i>Pseudokermes</i> sp.	Ginger	Quar	2
Cottony maple scale <i>Pulvinaria innumerabilis</i>	<i>Euphoria longana</i>	Quar	2
Green shield scale <i>Pulvinaria psidii</i>	Brazilian pepper Gardenia	Pub Nurs	4
Soil mealybug <i>Rhizoecus hibisci</i>	<i>Rhapis</i> Cut flowers Taro stem	Quar	4
Burrowing bug <i>Rhytidoptopus identatus</i>	Cut flowers	Quar	2

# Pest Exclusion Activities

<u>Pest Intercepted</u> <u>Common Name / Genus species</u>	<u>Material</u>	<u>Source*</u>	<u>Scope of Program</u> <u>Pest Interceptions</u>
Avocado thrips <i>Scirtothrips</i> sp.	Avocado (Hass)	Det	2
Rufous scale <i>Selenaspilus articulatus</i>	Ginger	Quar	2
Torpedo bug (larvae) <i>Siphanta acuta</i>	<i>Ficus benjamina</i>	Nurs	8
Torpedo bug egg mass <i>Siphanta acuta</i>	Basil Lilac <i>Cycas revoluta</i> <i>Protea</i>	Quar	8
Two spotted leafhopper <i>Sophonia rufofascia</i>	Guava Tristania	Nurs	4
A snail <i>Subulina octona</i>	<i>Schefflera</i>	Quar	2
Longhorned beetle <i>Sybra alternans</i>	Basil	Quar	4
Blackheaded ant <i>Tapinoma melanocephalum</i>	Cut flowers <i>Dracaena massangeana</i> Ginger Orchids	Quar	8
Whitefooted ant <i>Technomyrmex albipes</i>	Cut flowers Ginger Ti	Quar	16
Lantana lace bug <i>Teleonemia scrupulosa</i>	<i>Lantana camara</i>	Det	2
Artichoke fly <i>Terellia fuscicornis</i>	Unknown host	Pub	2
Slug <i>Veronicella</i> sp.	<i>Dracaena</i> <i>Dracaena massangeana</i> Herbs Taro leaves Ti	Quar	10

# Pest Exclusion Activities

<u>Pest Intercepted</u> <u>Common Name / Genus species</u>	<u>Material</u>	<u>Source*</u>	<u>Scope of Program</u> <u>Pest Interceptions</u>
Cuban snail <i>Zachrysia provisoria</i>	<i>Anthurium</i> <i>Ficus benjamina</i> Miscellaneous	Quar	6
		<b>TOTAL</b>	<u>512</u>

**\*Source:** Det: Detection      Nurs: Nursery      Pub: Public      Quar: Quarantine



This report was possible only through the cooperation of all the nursery owners, growers, governmental and private agencies, and others who provided the information necessary for its production.

A special acknowledgement and thank you to staff members Raymond Smith, for the pen-and-ink crop report cover, and to David Cassidy and Julia Chen, for the report layout and for compiling and computerizing the statistics.



**Los Angeles County Agricultural Commissioner /  
Weights and Measures Department  
3400 La Madera Avenue  
El Monte, California 91732**

