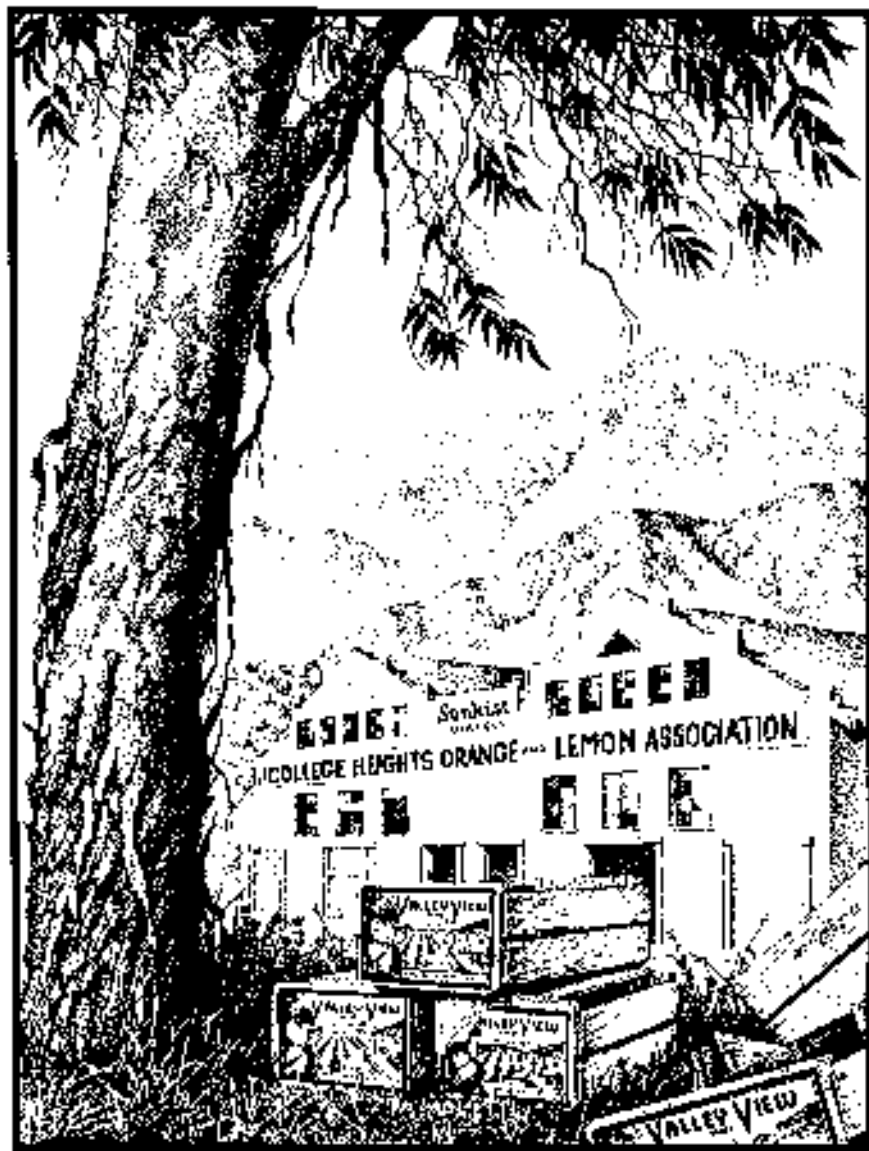


# LOS ANGELES COUNTY

AGRICULTURAL COMMISSIONER /  
WEIGHTS AND MEASURES DEPARTMENT



1994

# CROP AND LIVESTOCK REPORT



**COUNTY OF LOS ANGELES**

**Department of  
Agricultural Commissioner  
and Weights and Measures**

**3400 La Madera Avenue  
El Monte, California 91732**

**E. Leon Spaugy  
Agricultural Commissioner/  
Director of Weights and Measures**

**Cato R. Fikedal  
Chief Deputy**

***1994 Crop and Livestock Report***

Henry J. Voss, Secretary  
California Department of Food and Agriculture

and

The Honorable Board of Supervisors  
County of Los Angeles

In accordance with the provisions of Section 2272 and 2279 of the California Food and Agricultural Code, it is with pleasure that I submit the ***1994 Crop and Livestock Report*** on the acreage, yield, and gross value of agricultural commodities produced in Los Angeles County.

The overall gross value of agricultural crops and products for 1994 was \$216,114,112, a 0.98% increase from the 1993 total of \$214,010,713.

*Nursery Products* continues as the leading gross value commodity category with an increase of 4.75%. Increases also occurred in *Apiary, Livestock and Poultry Products* (7.69%); and *Livestock and Poultry* (8.94%). Decreases were experienced in *Cut Flowers* (14.95%); *Forest Products* (6.5%); *Fruit and Nut Crops* (11.37%); *Vegetable Crops* (9.45%); and *Field Crops* (13.64%). Most of these decreases were due to a reduction in the per unit value of the crop. Total acreage increased slightly for *Fruit and Nut Crops* and *Nursery Products*; decreases occurred in *Vegetable Crops* and *Cut Flowers*.

Respectfully submitted,

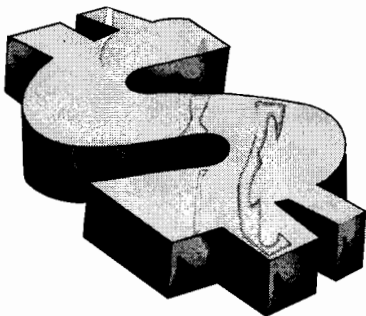
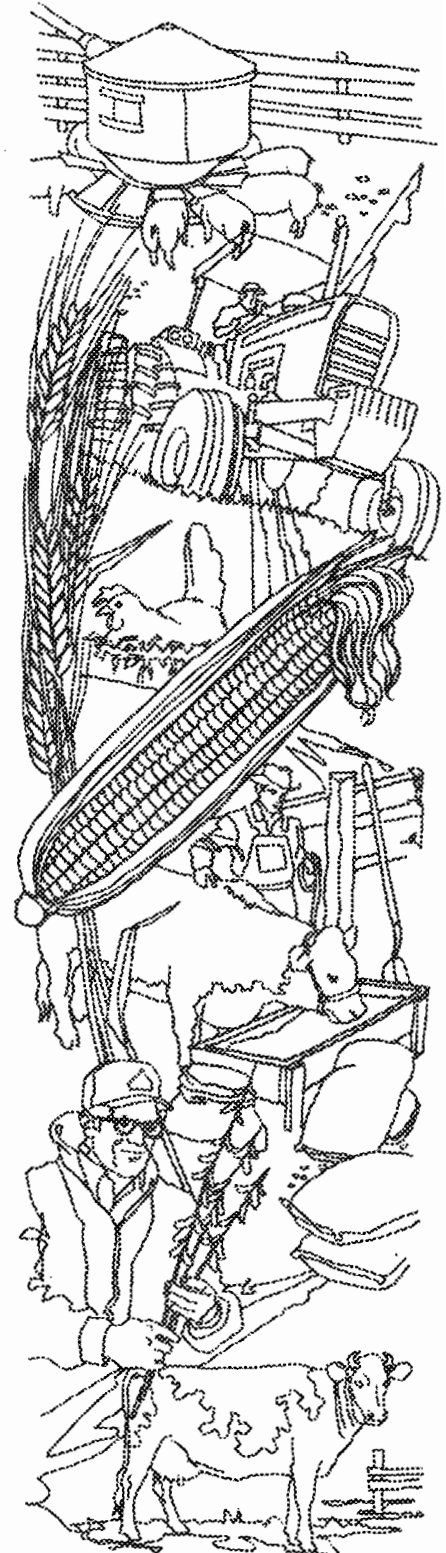
E. Leon Spaugy  
Agricultural Commissioner/  
Director of Weights and Measures

*"When tillage begins, other arts follow. The farmers, therefore,  
are the founders of human civilization."*

*Daniel Webster Jan 13, 1840*

# MILLION DOLLAR CROPS

1. Ornamental Trees and Shrubs	\$99,094,568
2. Bedding Plants	29,675,700
3. Dry Onions	12,720,000
4. Indoor Plants, Foliage	12,095,304
5. Peaches	10,700,000
6. Alfalfa Hay	6,690,040
7. Dairy Cattle	4,325,300
8. Milk	4,273,391
9. Ground Covers	3,761,848
10. Strawberries	2,705,386
11. Honey	2,280,000
12. Nectarines	2,200,000
13. Eggs	1,527,195
14. Rangeland	1,400,000
15. Beef Cattle	1,232,321
16. Pollination	1,029,000



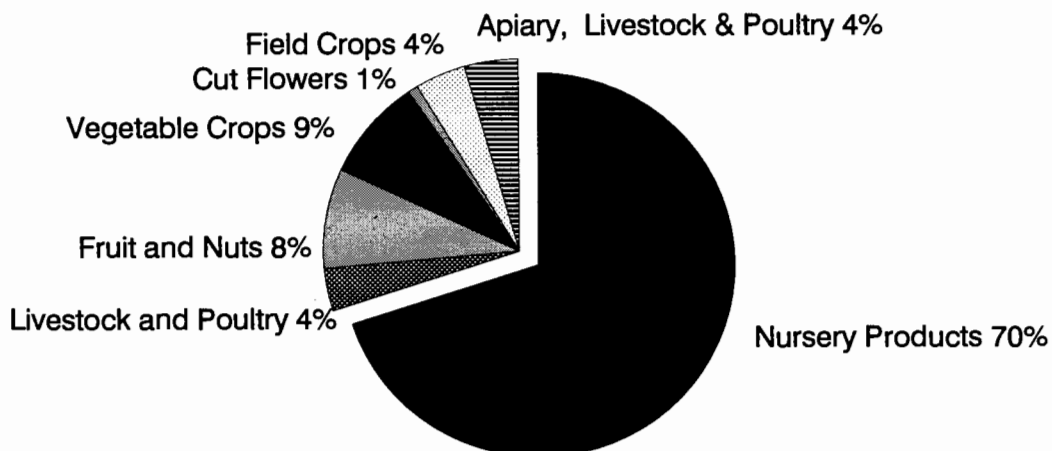
# SUMMARY

<u>Commodity</u>	<u>1992</u>	<u>1993</u>	<u>1994</u>
<b>Fruit and Nuts</b>	\$13,550,000	\$20,205,805	\$17,908,041
<b>Vegetable Crops</b>	16,956,500	20,802,750	18,836,679
<b>Nursery Products</b>	149,104,000	144,835,163	151,726,383
<b>Cut Flowers</b>	2,432,000	2,232,417	1,898,573
<b>Field Crops</b>	6,802,600	10,512,096	9,078,067
<b>Livestock and Poultry</b>	4,635,200	6,733,256	7,335,447
<b>Apiary, Livestock, and Poultry Products</b>	<u>7,389,400</u> *	<u>8,499,450</u>	<u>9,153,507</u>
<b>Subtotal</b>	200,869,700	213,820,937	215,936,697
<b>Forest Products</b>	<u>217,400</u>	<u>189,776</u>	<u>177,415</u>
<b>Grand Total</b>	\$201,087,100	\$214,010,713	\$216,114,112

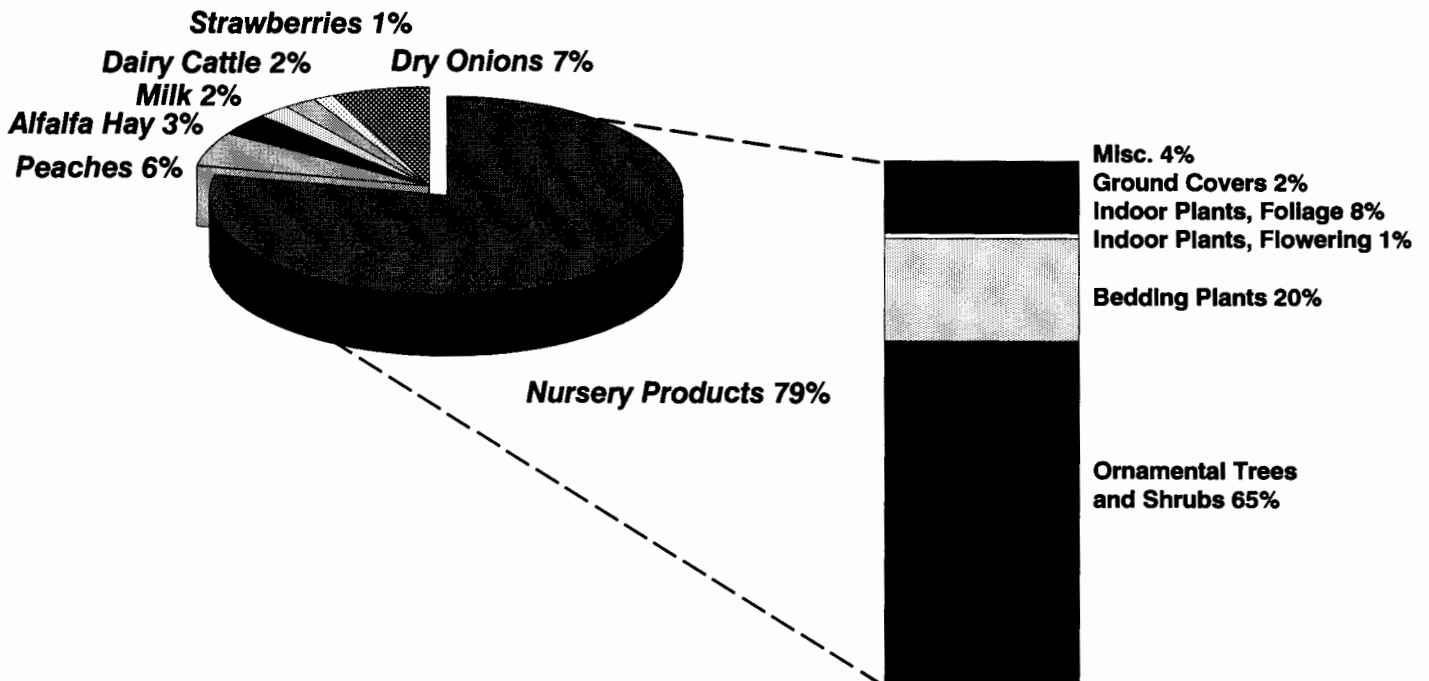
\* Revised figure

## CROP VALUE SUMMARY

**Total Value \$216,114,112**



# LEADING CROPS RELATIVE GROSS VALUE



## Nursery Products

Item	Year	House Sq. Ft.	Field Acres	Total
Ornamental Trees and Shrubs	1994	5,135,162	1,765.2	\$99,094,568
	1993	4,296,318	1,850	\$106,420,280
Bedding Plants	1994	2,608,890	269.3	29,675,700
	1993	2,008,200	110	20,327,140
Indoor Plants, Foliage	1994	942,060	13.8	12,095,304
	1993	1,205,140	6.0	8,050,781
Ground Covers	1994	873,670	45.9	3,761,848
	1993	780,110	35.1	3,668,484
Indoor Plants, Flowering	1994	308,984	12.6	1,633,465
	1993	254,265	1	1,365,559
Miscellaneous	1994	84,280	281.2	5,465,498
	1993	78,967	246	5,002,919
Includes vegetable plants, orchids, cacti, and sod.				
TOTAL	1994	9,953,046	2,388.0	\$151,726,383
	1993	8,623,000	2,248.1	\$144,835,163

## Vegetable Crops

Crop	Year	Acreage	Production		Unit	Value		
			Per Acre	Total		Per Unit	Total	
Dry Onions	1994	1,346	26.24	35,325	Ton	\$361	\$12,720,000	
	1993	1,564	27.40	42,884	Ton	380	\$16,278,210	
Sweet Corn	1994	205	4.88	1,001	Ton	431	431,425	
	1993	165	8.20	1,005	Ton	581	583,542	
Table Greens	1994	220	Includes oriental specialties and leaf lettuce.					1,690,413
	1993	265						1,757,750
Vine Crops	1994	254	Includes pumpkins, melons and tomatoes.					1,338,969
	1993	166						769,572
Root Vegetables	1994	21	Includes beets and carrots.					85,099
	1993	16						45,408
Miscellaneous	1994	123	Includes herbs and bean sprouts.					2,570,774
	1993	69						1,368,268
<b>TOTAL</b>	1994	2,169						\$18,836,680
	1993	2,245						\$20,802,750

## Fruit and Nut Crops

Crop	Year	Acreage	Production		Unit	Value		
			Per Acre	Total		Per Unit	Total	
Strawberries	1994	359	9.90	3,554	Ton	\$761	\$2,705,386	
	1993	335	15.10	5,054	Ton	\$842	\$4,256,016	
Peaches (Freestone)	1994	720	18.06	13,000	Ton	823	10,700,000	
	1993	738	18.88	13,932	Ton	826	11,513,211	
Nectarines	1994	110	20.00	2,200	Ton	1,000	2,200,000	
Avocados	1994	158	1.83	290	Ton	1,119	324,260	
	1993	240	1.56	378	Ton	938	354,120	
Cherries	1994	140	1.50	210	Ton	2,000	420,000	
	1993	140	1.75	245	Ton	2,000	490,000	
Miscellaneous	1994	594	Includes citrus, and other fruits and nuts.					1,558,395
	1993	486						3,592,458
<b>TOTAL</b>	1994	2,081						\$17,908,041
	1993	1,941						\$20,205,805

## Cut Flowers and Decoratives

Item	Year	House Sq. Ft.	Field Acres	Quantity Sold	Unit	Per Unit	Value Total
Christmas Trees	1994		171	30,693	Tree	\$30.50	\$936,048
	1993		214	49,823	Tree	\$29.50	\$1,473,580
Carnations (Standard)	1994		4.5	750,800	Bloom	.22	164,098
	1993		6	794,950	Bloom	.21	166,130
Chrysanthemums	1994		4				110,345
	1993	99,248	3				167,070
Miscellaneous	1994	98,328	81.75	Includes <u>Strelitzia</u> , <u>Gypsophila</u> , and all other cut flowers.			688,082
	1993	33,928	66				425,637
TOTAL	1994	98,328	261.25				\$1,898,573
	1993	133,176	285.43				\$2,232,417



## Field Crops

Crop	Year	Acreage	Production		Unit	Value		
			Per Acre	Total		Per Unit	Total	
Alfalfa Hay	1994	5,565	8.34	46,394	Ton	\$144	\$6,690,040	
	1993	5,532	8.05	44,518	Ton	\$144	\$6,410,297	
Grain Hay	1994	2,450	2.0	4,900	Ton	107	526,400	
	1993	1,779	2.51	4,463	Ton	127	565,511	
Barley	1994	1,387	.73	1,006	Ton	102	102,761	
	1993	672	2.51	1,685	Ton	101	169,386	
Miscellaneous	1994	886	Value includes wheat grain, irrigated pasture and grazing privileges on stubble.					358,866
	1993	1,922 *						1,655,566
Rangeland	1994	240,000						1,400,000
	1993	230,229						1,711,336
TOTAL	1994	10,288 **						\$9,078,067
	1993	9,634 **						\$10,512,096

\* Excluding stubble.

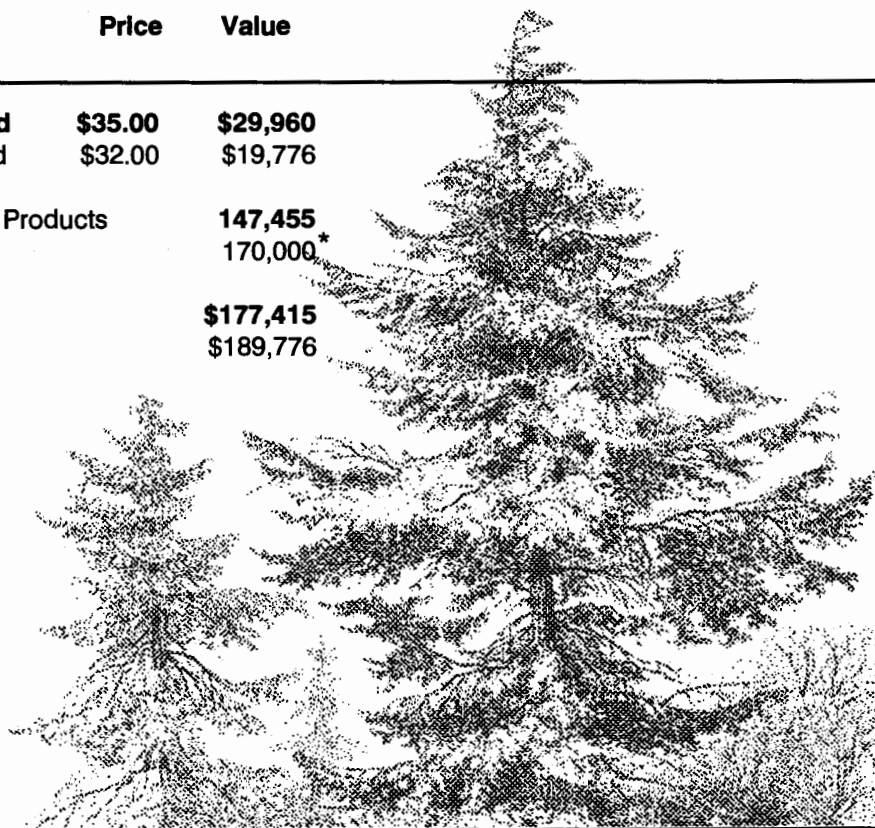
\*\* Excluding rangeland.

## Forest Products

Item	Year	Production	Unit	Price	Value
Firewood	1994	856	Cord	\$35.00	\$29,960
	1993	618	Cord	\$32.00	\$19,776
Timber	1994	Miscellaneous Products			147,455
	1993				170,000*
TOTAL	1994				\$177,415
	1993				\$189,776

\* Figures obtained from State Board of Equalization, Timber Tax System.

429 Acres Reforested.





# Livestock and Poultry

Species	Year	Production	Total Live Weight	Unit	Value	
					Per Unit	Total
Chickens	1994	1,036,264	6,424,837	Lb.	\$0.19	\$122,072
	1993	981,100	4,905,500	Lb.	\$0.25	\$123,000
Dairy Cattle	1994	3,340		Head	1,295	4,325,300
	1993	3,346		Head	1,300	4,349,800
Includes feeder calves & cull cows						
Beef Cattle	1994	3,067	21,469	Cwt.	57.40	1,232,321
	1993	3,321	23,247	Cwt.	64.60	1,502,000
Includes calves & heifers						
Hogs	1994	3,635	5,453	Cwt.	46.70	254,655
	1993	4,038	6,057	Cwt.	50.10	303,456
Sheep	1994	3,516	5,274	Cwt.	28.10	148,199
	1993	4,285	6,368	Cwt.	27.30	174,000
Miscellaneous	1994					1,252,900
	1993					281,000
Includes ostriches, ducks, rabbits, and goats.						
Total	1994					\$7,335,447
	1993					\$6,733,256

## Apiary, Livestock, and Poultry Products

Item	Year	Production	Unit	Per Unit	Value	
					Per Unit	Total
Honey	1994	4,750,000	Lb.	\$0.48	\$2,280,000	
	1993	5,657,500	Lb.	\$0.38	\$2,149,850	
Pollination	1994	28,000	Hive	36.75	1,029,000	
	1993	32,000	Hive	35.50	1,136,000	
Beewax	1994	11,000	Lb.	1.4	15,400	
	1993	14,000	Lb.	1.20	16,800	
Milk	1994	352,590	Cwt.	12.12	4,273,391	
	1993	350,061	Cwt.	11.49	4,022,000	
Wool	1994	45,980	Lb.	.62	28,521	
	1993	53,971	Lb.	.42	22,800	
Eggs	1994	3,356,472	Doz.	.455	1,527,195	
	1993	2,198,028	Doz.	.524	1,152,000	
Total	1994				\$9,153,507	
	1993				\$8,499,450	

# County of Los Angeles Sustainable Agriculture Reporting

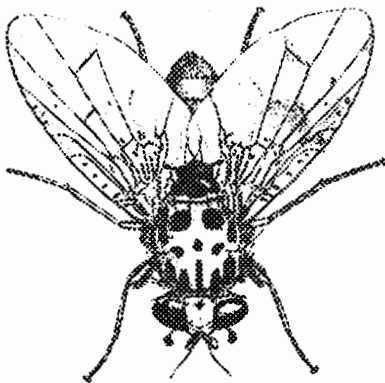
## Organic Farming Statistics 1994

Crop	Estimated Acres		Crop	Estimated Acres	
	1993	1994		1993	1994
Apples	6	7	Nectarines	5	5
Avocados	4	4	Asian Pears	7	7
Peaches	9	9	Pears	5	5
Herbs (Including sprouts)	48	50	Vegetables (Including oriental & lettuce)	25	27
Cherries	19	19	Misc. Trees	15	15

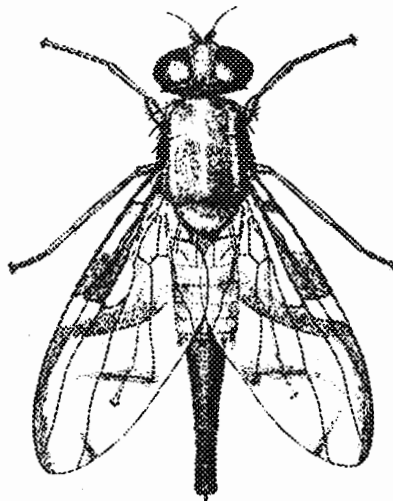
	<u>Farms</u>	<u>Acres</u>
1994	21	148
1993	20	143

## *Pest Detection Activities*

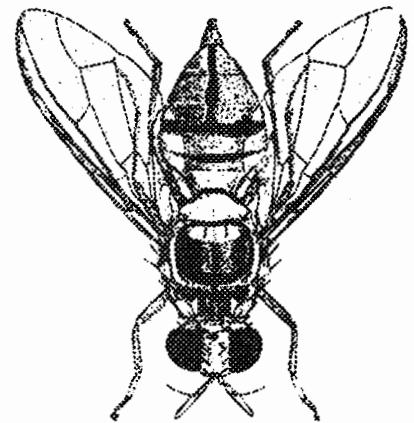
Pest	Number of Traps		Scope of Programs
	Pest Detection	Pest Eradication	
Mediterranean Fruit Fly	5,300	0	5 Detections
Mexican Fruit Fly	4,920	500	0 Detection
Oriental Fruit Fly	4,941	237	14 Detections
Melon Fruit Fly	4,941	284	1 Detections
Guava Fruit Fly	4,941	125	5 Detections
Gypsy Moth/Asian Gypsy Moth	3,546	200	2 Detections
Japanese Beetle	3,618	674	1 Detection (LAX)
European Corn Borer	17	0	0 Detection
European Pine Shoot Moth	32	0	0 Detection
Khapra Beetle	478	0	0 Detection
Africanized Honey Bee	42	1	0 Detection
<b>TOTAL</b>	<b>32,776</b>	<b>2,021</b>	<b>28 Detections</b>



*Mediterranean Fruit Fly*



*Mexican Fruit Fly*



*Oriental Fruit Fly*

## ***Pest Eradication Activities***

Pest	Method	Scope of Program
Mediterranean Fruit Fly	Steriles Released Reg./Soil/Bait Treatments Exclusion - Quarantine	19,838.46 Million Released 159 Properties 915 Sq. Miles/ 512,278 Lbs. Fruit Seized
Guava Fruit Fly	Male Annihilation Treatments	1 Treatment Area
Oriental Fruit Fly	Male Annihilation Treatments	1 Treatment Area
Mexican Fruit Fly	Steriles Released Exclusion - Quarantine	485.43 Million Released/ 63 Sq. Miles
Alligatorweed	Gross Area Inspected Herbicide Treatment (Net Area)	2,572.5 Acres 1,969 Sq. Ft. Treated
Halogeton	Mechanical Control	400 Sq. Ft. Treated

## ***Biological Control Activities***

Pest	Agent/Mechanism	Scope of Programs
Mediterranean Fruit Fly	(Steriles)	19,838.46 Million Sterile Fruit Flies Released
Mexican Fruit Fly	(Steriles)	485.43 Million Sterile Fruit Flies Released

## *Pest Exclusion Activities*

Pest Exclusion Violations Issued

Number of Violations Issued

Citrus Pests	103
Caribbean Fruit Fly	92
Cherry Fruit Fly	3
Sweet Potato Weevil	15
Peach Yellow/Red Suture	1
Nut Tree Pests	1
Ozonium Root Rot	37
European Corn Borer	19
Plum Curculio/Apple, Blueberry Maggot	66
Burrowing Nematode	31
Corn/Sugarcane Borer	3
Walnut/Pecan Pests	7
Cedar Apple Rust	5
European Pine Shoot Moth	1
Peach Rosette Disease	1
Cereal Leaf Beetle	5
West Indian Sugarcane Root Borer	3
Japanese Beetle	17
Hydrilla	2
Soybean Cyst Nematode	17
Citrus Canker	21
Imported Fire Ant	5
Infested/Presume Infested	413
Markings	139
Chestnut Bark/Oak Wilt Disease	7
Failure to Hold Plant Material For Inspection	12
Foreign Fruits and Vegetables	9
Fruits and Vegetables From Hawaii	6

**Total**

**1,041**

## ***Pest Exclusion Activities***

<u><b>Pest Intercepted</b></u> <u>Common Name/Genus Species</u>	<u><b>Material</b></u>	<u><b>Source*</b></u>	<u><b>Scope of Program</b></u> <u>Pest Interceptions</u>
Leafhopper (larva) <i>Acopsis</i> sp. or nr.	Produce	Qua	1
Spiraling whitefly <i>Aleurodicus dispersus</i>	Herbs, Taro, Ti	Qua	5
Woolly whitefly <i>Aleurothrixus floccosus</i>	Ash, Citrus, Guava	Public Det, Nsy	10
Ant <i>Anoplolepis longipes</i>	Bamboo	Qua	1
California red scale <i>Aonidiella aurantii</i>	Sago palm	Qua	1
Coffee bean weevil <i>Araecerus fasciculatus</i>	Cut flowers	Qua	1
Coconut scale <i>Aspidiotus destructor</i>	Areca palm	Qua	6
Looper <i>Autographa</i> sp.	Herbs	Qua	1
Melon fruit fly <i>Bacterocera cucurbitae</i>	Citrus (lemon)	Det	1
Oriental fruit fly <i>Bacterocera dorsalis</i>	Apple, Citrus, Loquat, Guava	Det	15
Guava fruit fly <i>Bactrocera correcta</i>	Fig, Guava, Peach	Det	5
Bamboo pit scale <i>Bambusaspis miliaris</i>	Bamboo	Qua	1
Snail <i>Bradybaena similaris</i>	Aquatic plants, Palms, Citrus, Ficus, Basil	Qua	59
Medfly <i>Ceratitis capitata</i>	Citrus spp., Guava, Peach	Det	5
Red wax scale <i>Ceroplastes rubens</i>	<i>Schefflera</i>	Qua	2

## ***Pest Exclusion Activities***

<u><b>Pest Intercepted</b></u> <u>Common Name/Genus Species</u>	<u><b>Material</b></u>	<u><b>Source*</b></u>	<u><b>Scope of Program</b></u> <u>Pest Interceptions</u>
Wax scale <i>Ceroplastes rusci</i>	<i>Ravenea rivularis</i>	Qua	1
Green garden looper <i>Chrysodeixis eriosoma</i>	Basil, Produce	Qua	4
Planthopper <i>Clastoptera sp.</i>	Basil	Qua	1
Green scale <i>Coccus viridis</i>	Ginger	Qua	1
Weevil <i>Curculio sp.</i>	Nut	Qua	1
Snail <i>Euglandina rosea</i>	Herbs	Qua	1
Coffee root mealybug <i>Geococcus coffeae</i>	Rhapis	Qua	2
Soil mealybug <i>Geococcus coffeae</i>	<i>Chamaedorea</i>	Qua	2
Cockroach <i>Graptoblatta notulata</i>	Orchids	Qua	1
Glassy-winged leafhopper <i>Homalodisca coagulata</i>	Tree	Public	1
Mining scale <i>Howardia biclavis</i>	Ficus, Plumeria	Qua	11
Black thread scale <i>Ischnaspis longirostris</i>	Areca palm	Qua	1
Snail <i>Lamellaxis sp.</i>	<i>Cycas revoluta</i>	Qua	2
Moth <i>Lineodes sp.</i>	Produce	Qua	2
Gypsy moth <i>Lymantria dispar</i>	Furniture, Ornamental tree	Qua, Det	4

## ***Pest Exclusion Activities***

<u><b>Pest Intercepted</b></u> <u>Common Name/Genus Species</u>	<u><b>Material</b></u>	<u><b>Source*</b></u>	<u><b>Scope of Program</b></u> <u>Pest Interceptions</u>
Lygaeid bug <i>Nysius</i> sp.	Basil, Produce	Qua	2
Snail <i>Opeas</i> sp. or near	Palms	Qua	3
Orchid weevil <i>Orchidophilus alternatus</i>	Ti	Qua	1
Ensign scale <i>Orthezia tillandsiae</i>	Spanish moss	Qua	1
Mirid bug <i>Orthotylus perkinsi</i>	Cut flowers, Ginger	Qua	2
Weevil <i>Oxydema</i> sp.	Ginger	Qua	2
Palm mealybug <i>Palmicultor palmarum</i>	<i>Neodypsis</i>	Qua	1
Nesting whitefly <i>Paraleyrodes minei</i>	Melaleuca, Citrus, Avocado	Nsy, Public	7
Big headed ant <i>Pheidole megacephala</i>	Basil, Cycas, Herbs, Cut flowers	Qua	9
Boxwood scale <i>Pinnaspis buxi</i>	Areca Palm, Ti	Qua	6
Lesser snow scale (dead) <i>Pinnaspis strachani</i>	Palm frond, <i>Cocos plumosa</i>	Qua	2
Lesser snow scale <i>Pinnaspis strachani</i>	Areca palm, Cut flowers	Qua	12
Pyriform scale <i>Protopulvinaria pyriformis</i>	Eugenia, Gardenia	Nsy, Public	3
Trilobe scale <i>Pseudaonidia trilobitiformis</i>	Areca palm	Qua	1
Magnolia white scale <i>Pseudaulacaspis cockerelli</i>	Cut flowers, Palms	Qua, Nsy	54



## *Pest Exclusion Activities*

<u>Pest Intercepted</u> <u>Common Name/Genus Species</u>	<u>Material</u>	<u>Source*</u>	<u>Scope of Program</u> <u>Pest Interceptions</u>
Aglaonema mealybug <i>Pseudococcus</i> sp.	<i>Schefflera</i>	Qua	1
Green shield scale <i>Pulvinaria psidii</i>	Cut flowers, Ficus	Qua, Det, Nsy	8
Soil mealybug <i>Rhizoecus americanus</i>	Palms, Rhapis, Ficus	Qua	26
False powderpost beetle <i>Sinoxylon anale</i>	Pallets	Public	1
RIFA <i>Solenopsis invicta</i>	Herbs, Palms, Trailer	Qua	5
Fire ant <i>Solenopsis</i> sp.	Yucca	Qua	1
Two spotted leafhopper <i>Sophonia rufofascia</i>	Cut flowers, Herbs, Ti	Qua	4
Black headed ant <i>Tapinoma melanocephalum</i>	Rhapis	Qua	1
White footed ant <i>Technomyrmex albipes</i>	Cut flowers, Basil	Qua	26
Lantana lace bug <i>Teleonemia scrupulosa</i>	<i>Lantana camara</i>	Pub	1
Slug <i>Vaginulus plebeius</i>	<i>Dracaena</i>	Qua	1
Slug <i>Veronicella</i>	<i>Cycas revoluta</i> , <i>Musa</i> , <i>Dracaena</i> , Taro, <i>Aralia</i>	Qua	7
Cuban snail <i>Zachrysis provisoria</i>	Ficus, <i>Cycas</i> , <i>Dracaena</i>	Qua	11
<b>Total</b>			<b>348</b>

**\*Source:** Det: Detection      Nsy: Nursery      Qua: Quarantine



*This report was possible only through the cooperation of all the nurserymen, growers, governmental and private agencies, and others who provided the information necessary for its production. A special acknowledgement and thank you to staff members Raymond Smith, for the pen-and-ink crop report cover, and to Miguel Angel Gonzalez and Julia Chen, for the report layout and for compiling and computerizing the statistics.*



**Los Angeles County Agricultural Commissioner /  
Weights and Measures Department  
3400 La Madera Avenue  
El Monte, California 91732**

